



# TRANSFORMER COMMODITIES INDICES

MONTHLY

STATISTICS

FOR THE PERIOD

**January 2009 - September 2024**

**PUBLICATION DATE: 31st October 2024**

The indices are published monthly, usually in the last week of the month following the month of reference in compliance with EU market statistical rules (e.g. data for September 2021, is published in the last week October 2021). The indices for paper, cold steel and hot steel are lagging one month behind as these are based on data from national statistical offices, which become available after the deadline for the T&D Europe indices.

**IMPORTANT**

Each operator on the market remains free, autonomous and independent to set its respective prices. The indices do not affect the freedom of markets players to set and change their prices and T&D Europe will not give any instructions on how to use the indices.

In April 2020, the December 2019 - March 2020 indices for GOES High Grade have been updated due to a change in the number of reporting organisations. **Following a quality check in October 2024 the Mineral Oil index for the period January 2023 to August 2024 has been updated, following the discovery of a data entry error.** The issue has been resolved and a robust process has been put in place to avoid its reoccurrence.

We have stopped publishing the **Aluminium and Copper indices** after December 2012, as information is readily available from other sources.

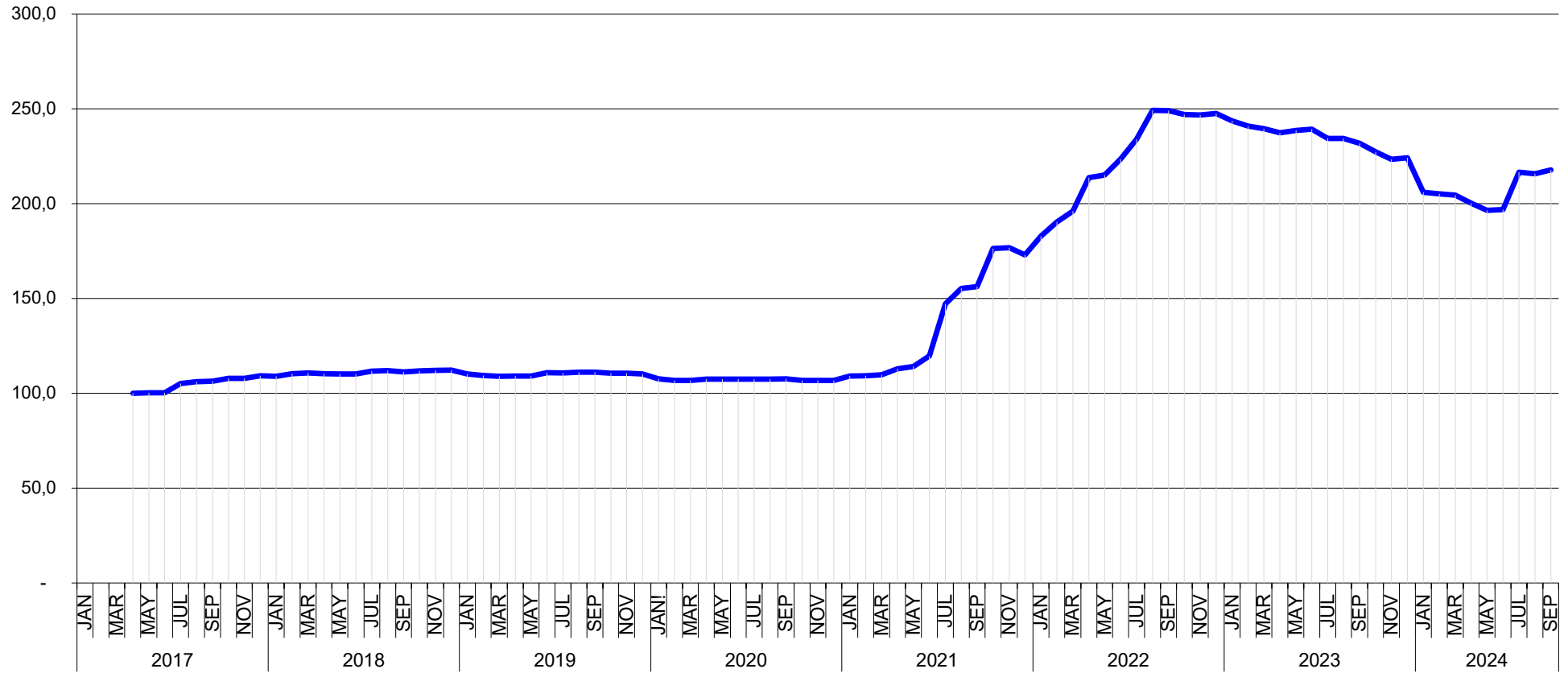
|  |                  | T&F EUROPE   |                  |                       |                   |                   |                  |                   |
|--|------------------|--|------------------|-----------------------|-------------------|-------------------|------------------|-------------------|
|  |                  | TRANSFORMER COMMODITY INDICES  |                  |                       |                   |                   |                  |                   |
| BASE APR-2017 = 100 [Goes Conv., Goes High Grade, Goes Super High Grade, Mineral Oil]                |                  | The number of reporting organisations has changed and a linking factor has been applied to the series. |                  |                       |                   |                   |                  |                   |
| BASE JAN-2009 = 100 [Paper, Cold Steel, Hot Steel]   |                  |  |                  |                       |                   |                   |                  |                   |
| *If due to an insufficient number of respondents, we are not able to provide the High Grade indices. |                  | GOES CONV.   | GOES HIGH GRADE  | GOES SUPER HIGH GRADE | MIN. OIL          | PAPER             | COLD STEEL       | HOT STEEL         |
| <b>2009</b>  | JAN              |  |                  |                       |                   | 100               | 100              | 100               |
|  | FEB              |  |                  |                       |                   | 100,043103448276  | 95,5735053913985 | 95,5497329271901  |
|  | MAR              |  |                  |                       |                   | 99,8275862068965  | 90,7399815848285 | 90,4970531722299  |
|  | APR              |  |                  |                       |                   | 99,6120689655172  | 87,7015604902252 | 84,4648476481669  |
|  | MAY              |  |                  |                       |                   | 100,036026762738  | 88,3318303516457 | 82,8326835340175  |
|  | JUN              |  |                  |                       |                   | 100,380854348945  | 86,5596471532988 | 83,807233149848   |
|  | JUL              |  |                  |                       |                   | 100,064978839638  | 87,9925948071113 | 85,017430222373   |
|  | AUG              |  |                  |                       |                   | 100,10389610396   | 89,6363691694046 | 87,7601536839409  |
|  | SEP              |  |                  |                       |                   | 100,707346886258  | 91,4737486447844 | 88,649426823945   |
|  | OCT              |  |                  |                       |                   | 102,948726196603  | 92,4518210834782 | 89,36460469231    |
|  | NOV              |  |                  |                       |                   | 102,819415851776  | 91,5031114372935 | 88,077756800348   |
|  | DEC              |  |                  |                       |                   | 103,314783839424  | 91,3359772087362 | 88,8342281417551  |
| <b>2010</b>  | JAN              |  |                  |                       |                   | 103,85960623771   | 91,0065196825429 | 89,3987018739259  |
|  | FEB              |  |                  |                       |                   | 103,471759589289  | 93,2909560307748 | 90,6695746578664  |
|  | MAR              |  |                  |                       |                   | 103,861376934134  | 95,4425120129131 | 93,8258097333733  |
|  | APR              |  |                  |                       |                   | 103,706143996232  | 104,652007645272 | 104,5131521458986 |
|  | MAY              |  |                  |                       |                   | 104,438902816922  | 110,005367794115 | 110,8124835427115 |
|  | JUN              |  |                  |                       |                   | 104,766526651386  | 112,670347853781 | 112,237479550792  |
|  | JUL              |  |                  |                       |                   | 105,342411416893  | 113,521058732905 | 112,576291342663  |
|  | AUG              |  |                  |                       |                   | 105,514825209996  | 113,514560904802 | 111,848946771256  |
|  | SEP              |  |                  |                       |                   | 105,318175134181  | 113,347923316937 | 113,177993050947  |
|  | OCT              |  |                  |                       |                   | 105,118944112354  | 111,19438419149  | 111,616958297688  |
|  | NOV              |  |                  |                       |                   | 105,812379696833  | 109,682771270266 | 108,382451323616  |
|  | DEC              |  |                  |                       |                   | 106,159097489072  | 110,146080018756 | 109,49790052962   |
| <b>2011</b>  | JAN              |  |                  |                       |                   | 107,344101148538  | 114,022250368153 | 114,719353616603  |
|  | FEB              |  |                  |                       |                   | 107,618970603376  | 119,498943793154 | 121,354391404182  |
|  | MAR              |  |                  |                       |                   | 107,618970603376  | 122,814195084782 | 123,964868396249  |
|  | APR              |  |                  |                       |                   | 107,763820886123  | 123,599128226139 | 122,524560762264  |
|  | MAY              |  |                  |                       |                   | 107,860387741289  | 121,095145068437 | 121,219284181095  |
|  | JUN              |  |                  |                       |                   | 107,860387741289  | 120,936699074786 | 121,048283138388  |
|  | JUL              |  |                  |                       |                   | 108,005238024036  | 117,897834062031 | 119,799974725563  |
|  | AUG              |  |                  |                       |                   | 108,631768974666  | 117,292771934631 | 119,994749053302  |
|  | SEP              |  |                  |                       |                   | 108,631768974666  | 116,48203974996  | 118,640493147214  |
|  | OCT              |  |                  |                       |                   | 110,008024089535  | 114,50186653476  | 116,867552078694  |
|  | NOV              |  |                  |                       |                   | 109,71730540867   | 112,345212026095 | 115,489795367252  |
|  | DEC              |  |                  |                       |                   | 109,72391672497   | 111,031415088771 | 113,039614759077  |
| <b>2012</b>  | JAN              |  |                  |                       |                   | 110,25226301676   | 111,20183989504  | 113,22045793718   |
|  | FEB              |  |                  |                       |                   | 109,731479203774  | 113,071827185025 | 113,714848696969  |
|  | MAR              |  |                  |                       |                   | 109,780702322766  | 113,759727744431 | 114,481448610389  |
|  | APR              |  |                  |                       |                   | 109,779762631356  | 114,031374491312 | 114,755539401333  |
|  | MAY              |  |                  |                       |                   | 109,926492296923  | 113,929157209132 | 115,80513460936   |
|  | JUN              |  |                  |                       |                   | 109,926492296923  | 113,250138393936 | 113,523707693295  |
|  | JUL              |  |                  |                       |                   | 110,024938534908  | 112,544769750897 | 112,85228139009   |
|  | AUG              |  |                  |                       |                   | 109,503217745595  | 112,200875627407 | 112,455459450292  |
|  | SEP              |  |                  |                       |                   | 109,219155328557  | 112,413681047474 | 111,517443067505  |
|  | OCT              |  |                  |                       |                   | 109,26649906473   | 111,30232921364  | 109,46835730975   |
|  | NOV              |  |                  |                       |                   | 109,16993203665   | 109,09907791768  | 108,872685331459  |
|  | DEC              |  |                  |                       |                   | 109,217275945738  | 110,582265092069 | 108,316925839236  |
| <b>2013</b>  | JAN              |  |                  |                       |                   | 109,12258473392   | 110,899330208631 | 108,910256283991  |
|  | FEB              |  |                  |                       |                   | 108,495843606228  | 110,871741711692 | 108,710748890538  |
|  | MAR              |  |                  |                       |                   | 108,542247650992  | 110,665736164779 | 109,119890333483  |
|  | APR              |  |                  |                       |                   | 108,781785406085  | 109,743444858932 | 109,607445628386  |
|  | MAY              |  |                  |                       |                   | 108,6742878431    | 108,638230748659 | 108,29668558486   |
|  | JUN              |  |                  |                       |                   | 108,829129142258  | 107,59584983579  | 106,180052641073  |
|  | JUL              |  |                  |                       |                   | 108,922878923195  | 107,07282091482  | 104,758627048878  |
|  | AUG              |  |                  |                       |                   | 109,017564398541  | 106,359187527278 | 104,269685398952  |
|  | SEP              |  |                  |                       |                   | 109,260865310865  | 108,34686018727  | 104,72112827769   |
|  | OCT              |  |                  |                       |                   | 109,496696916499  | 108,391981932249 | 104,677556461485  |
|  | NOV              |  |                  |                       |                   | 108,409477263526  | 106,982931361379 | 104,28089933759   |
|  | DEC              |  |                  |                       |                   | 108,189191211539  | 107,092738679861 | 104,629924580503  |
| <b>2014</b>  | JAN              |  |                  |                       |                   | 108,483594023884  | 107,79345131282  | 104,953841745202  |
|  | FEB              |  |                  |                       |                   | 108,564620941129  | 107,261865034934 | 104,710988437512  |
|  | MAR              |  |                  |                       |                   | 108,656007816987  | 109,129057761705 | 105,35583782822   |
|  | APR              |  |                  |                       |                   | 108,709471223876  | 109,003069893843 | 105,046406728362  |
|  | MAY              |  |                  |                       |                   | 108,445670549174  | 109,71975821806  | 105,04496978383   |
|  | JUN              |  |                  |                       |                   | 108,321540188394  | 109,59519038569  | 104,845207816058  |
|  | JUL              |  |                  |                       |                   | 108,108229480114  | 109,4858287459   | 104,55842387372   |
|  | AUG              |  |                  |                       |                   | 108,068099479045  | 109,530388864702 | 105,132097459172  |
|  | SEP              |  |                  |                       |                   | 107,934964732481  | 108,241274960332 | 104,444865456723  |
|  | OCT              |  |                  |                       |                   | 107,941752817895  | 107,092719838876 | 103,31982237375   |
|  | NOV              |  |                  |                       |                   | 107,941752817895  | 106,085749362953 | 104,59029209153   |
|  | DEC              |  |                  |                       |                   | 108,245029554219  | 104,454513651085 | 103,11073907338   |
| <b>2015</b>  | JAN              |  |                  |                       |                   | 108,25187639633   | 102,954054396343 | 101,38013733513   |
|  | FEB              |  |                  |                       |                   | 108,396667922381  | 101,166593959177 | 99,9314678916739  |
|  | MAR              |  |                  |                       |                   | 108,059450758987  | 101,539465590666 | 99,1535147579076  |
|  | APR              |  |                  |                       |                   | 107,8039962620562 | 101,14523403934  | 99,4246198885318  |
|  | MAY              |  |                  |                       |                   | 107,851104048144  | 101,043909909053 | 99,5203976044509  |
|  | JUN              |  |                  |                       |                   | 107,741831022151  | 99,4405150195465 | 97,1579348237105  |
|  | JUL              |  |                  |                       |                   | 108,017188587135  | 98,002681857506  | 95,604336211998   |
|  | AUG              |  |                  |                       |                   | 107,67997142374   | 96,8793897309689 | 93,642678655666   |
|  | SEP              |  |                  |                       |                   | 107,67997142374   | 95,1078608165779 | 93,2115802324149  |
|  | OCT              |  |                  |                       |                   | 107,569828397747  | 93,759753452331  | 91,4626538801005  |
|  | NOV              |  |                  |                       |                   | 107,618111825329  | 91,9736644285237 | 87,960225210199   |
|  | DEC              |  |                  |                       |                   | 107,941752817895  | 90,8630411501295 | 86,3415784819859  |
| <b>2016</b>  | JAN              |  |                  |                       |                   | 107,790881279417  | 89,5790016168718 | 84,968087660828   |
|  | FEB              |  |                  |                       |                   | 107,887448134583  | 89,7393299054282 | 85,1083937603025  |
|  | MAR              |  |                  |                       |                   | 107,990303075162  | 90,930238538018  | 85,933989758695   |
|  | APR              |  |                  |                       |                   | 108,755016171702  | 95,7644010550878 | 91,0876208254964  |
|  | MAY              |  |                  |                       |                   | 108,975302223688  | 99,9             | 95,1              |
|  | JUN              |  |                  |                       |                   | 109,499631841683  | 101,6            | 97,2              |
|  | JUL              |  |                  |                       |                   | 109,362336474033  | 104,4            | 101,2             |
|  | AUG              |  |                  |                       |                   | 109,31405304645   | 105,1            | 102,3             |
|  | SEP              |  |                  |                       |                   | 109,417407987029  | 106,9            | 103,2             |
|  | OCT              |  |                  |                       |                   | 109,802908578006  | 110,2            | 106,8             |
|  | NOV              |  |                  |                       |                   | 109,899475433172  | 112,6            | 109,5             |
|  | DEC              |  |                  |                       |                   | 109,7             | 115,5            | 112,8             |
| <b>2017</b>  | JAN              |  |                  |                       |                   | 109,8             | 120,6            | 119               |
|  | FEB              |  |                  |                       |                   | 109,5             | 123,3            | 121,7             |
|  | MAR              |  |                  |                       |                   | 109,5             | 123,8            | 124,3             |
|  | APR              | 100  |                  |                       | 100               | 109,5             | 121,8            | 123,2             |
|  | MAY              | 100,162659813267   | 100              |                       | 100               | 109,664898030204  | 120,519166444716 | 121,334861327489  |
|  | JUN              | 100,235314529859   | 98,9788245813689 |                       | 100,4123168591601 | 109,627588093565  | 119,864766767999 | 120,96725507732   |
|  | JUL              | 105,145472092998   | 98,012518289709  |                       | 100,828469983267  | 110,000175685172  | 119,347958818181 | 120,409882671877  |
|  | AUG              | 106,172397714087   | 97,8428304340758 |                       | 99,3898706280864  | 98,6203075218174  | 100,70960682826  | 122,026697649037  |
|  | SEP              | 106,434822212824   | 97,8428304340758 |                       | 99,317430518712   | 98,2860045250958  | 121,16           | 121,249           |
|  | OCT              | 107,814177429324   | 96,0280848642497 |                       | 99,325592784557   | 95,0427113635314  | 110,22231703644  | 121,248514460476  |
|  | NOV              | 107,878156855876   | 96,0280848642497 |                       | 99,1603089011958  | 95,6725308214434  | 110,649755145086 | 121,47224045678   |
|  | DEC              | 109,271609356192   | 96,0280848642497 |                       | 100,07974719014   | 96,044698647551   | 110,758683867082 | 121,193701486101  |
| JAN  | 109,07016059946  | 95,2162250040644   |                  | 99,3021262702526      | 100,808052823567  | 111,457830539103  | 124,212890604409 |                   |
| FEB  | 110,162659813262 | 97,1407088278329   |                  | 98,773619556789       | 101,874682550676  | 111,889850416625  | 125,711855482565 |                   |
| MAR  | 110,662892598999 | 97,1386766379451   |                  | 99,9163367750888      | 101,426790414185  | 112,26910450758   | 125,991513826768 |                   |
| APR  | 110,377896086405 | 97,047228092993  |                  | 99,7449291923438      | 101,371381077712  | 112,587897801426  | 126,281239496005 |                   |
| MAY  | 110,115271587668 | 97,047228092993  |                  | 99,7051381464344      | 102,368749134229  | 112,91783967473   | 127,248856111606 |                   |
| JUN  | 110,187926304261 | 97,2169159486263   |                  | 100,370628127117      | 102,765849378954  | 113,355200281096  | 127,331634874131 |                   |
| JUL  | 111,646442629884 | 98,7339456998862   |                  | 99,9683712198506      | 108,084222191439  | 113,51679550244   | 127,624716438746 |                   |
| AUG  |                  |  |                  |                       |                   |                   |                  |                   |

| T&F EUROPE   |      |                  |                  |                       |  |                  |                  |                  |
|--|------|------------------|------------------|-----------------------|--|------------------|------------------|------------------|
| TRANSFORMER COMMODITY INDICES  |      |                  |                  |                       |  |                  |                  |                  |
| BASE APR-2017 = 100 [Goes Conv., Goes High Grade, Goes Super High Grade, Mineral Oil]              |      |                  |                  |                       | The number of reporting organisations has changed and a linking factor has been applied to the series. |                  |                  |                  |
| BASE JAN-2009 = 100 [Paper, Cold Steel, Hot Steel]   |      |                  |                  |                       |  |                  |                  |                  |
| ! due to an insufficient number of respondents, we are not able to provide the High Grade indices. |      |                  |                  |                       |  |                  |                  |                  |
|  |      | GOES CONV.       | GOES HIGH GRADE  | GOES SUPER HIGH GRADE | MIN. OIL   | PAPER            | COLD STEEL       | HOT STEEL        |
| 2018   | NOV  | 112,119240487112 | 99,2450414566737 | 100,21221891197       | 110,25719167013  | 114,27970083325  | 125,24203043634  | 128,789994102788 |
|  | DEC  | 112,227680362623 | 98,2289465127622 | 100,635636452679      | 110,368010343076   | 114,334665194258 | 124,155838836182 | 127,590666561045 |
|  | JAN  | 110,143465955301 | 98,2685742155747 | 99,2051993633433      | 110,659832848502   | 114,946968175886 | 122,791107886447 | 126,202656386153 |
| 2019   | FEB  | 109,353174675489 | 98,2682355172601 | 99,4250042621776      | 110,470499480683   | 115,581586688084 | 123,407          | 125,984          |
|  | MAR  | 108,990750078619 | 98,4057470330028 | 99,146022935967       | 110,333841252251   | 115,525193253689 | 125,242          | 127,719          |
|  | APR  | 109,069          | 98,439           | 99,396                | 104,816  | 115,733          | 123,038          | 126,157          |
|  | MAY  | 109,101          | 98,277           | 99,58                 | 104,613  | 115,634          | 122,054          | 124,932          |
|  | JUN  | 110,869          | 98,612           | 99,07                 | 104,345  | 115,381          | 122,847          | 125,062          |
|  | JUL  | 110,695          | 98,541           | 98,539                | 107,54   | 115,48           | 123,374          | 124,758          |
|  | AUG  | 111,183          | 98,541           | 99,284                | 106,875  | 115,436          | 123,933          | 127,046          |
|  | SEP  | 111,173          | 98,378           | 99,141                | 106,875  | 115,535          | 124,649          | 126,472          |
|  | OCT  | 110,63           | 96,123           | 99,192                | 105,139  | 115,326          | 122,725          | 123,153          |
|  | NOV  | 110,641          | 96,123           | 99,559                | 103,939  | 115,183          | 120,119          | 119,64           |
|  | DEC  | 110,186          | 96,1139275650595 | 100,365               | 104,16   | 115,073          | 120,219          | 119,944          |
|  | 2020 | JAN              | 107,583          | 95,8445056938558      | 99,427   | 104,881          | 114,876          | 122,949          |
| FEB  |      | 106,867          | 96,344320596306  | 99,121                | 104,871  | 114,876          | 125,992          | 125,496          |
| MAR  |      | 106,835          | 96,4442835767961 | 99,029                | 102,664  | 114,711          | 124,727          | 124,303          |
| APR  |      | 107,421          | 97,126           | 99,033                | 100,799  | 115,304          | 121,819          | 121,982          |
| MAY  |      | 107,421          | 97,126           | 99,518                | 100,217  | 115,249          | 121,304          | 121,299          |
| JUN  |      | 107,431          | 97,126           | 99,039                | 98,019   | 114,996          | 119,805          | 118,74           |
| JUL  |      | 107,507          | 97,126           | 98,614                | 89,742   | 114,987          | 119,515          | 119,087          |
| AUG  |      | 107,507          | 97,126           | 99,855                | 85,894   | 114,832          | 120,488          | 120,399          |
| SEP  |      | 107,659          | 97,126           | 99,059                | 79,845   | 115,04           | 126,819          | 125,029          |
| OCT  |      | 106,857          | 96,406           | 98,549                | 82,089   | 115,194          | 129,359          | 129,172          |
| NOV  |      | 106,857          | 96,406           | 97,631                | 83,733   | 115,084          | 132,256          | 131,698          |
| DEC  |      | 106,857          | 96,406           | 97,978                | 84,342   | 115,557          | 139,907          | 139,473          |
| 2021   | JAN  | 109,112          | 97,958           | 98,345                | 89,329   | 115,997          | 156,139          | 158,851          |
|  | FEB  | 109,21           | 97,958           | 98,814                | 89,819   | 116,415          | 164,808          | 169,088          |
|  | MAR  | 109,828          | 97,958           | 98,386                | 87,685   | 116,843          | 175,155          | 180,702          |
|  | APR  | 112,843          | 102,21           | 99,478                | 93,983   | 117,261          | 194,071          | 202,227          |
|  | MAY  | 114,176          | 104,566          | 101,028               | 99,1   | 119,064          | 204,531          | 219,761          |
|  | JUN  | 119,772          | 114,128          | 105,252               | 100,18   | 120,119          | 211,008          | 229,998          |
|  | JUL  | 147,077          | 138,935          | 131,229               | 104,761  | 121,702          | 231,937          | 249,137          |
|  | AUG  | 155,318          | 155,801          | 134,473               | 107,808  | 123,879          | 233,783          | 250,666          |
|  | SEP  | 156,294          | 157,508          | 134,718               | 108,279  | 126,198          | 235,651          | 251,891          |
|  | OCT  | 176,323          | 157,938          | 136,412               | 113,654  | 127,363          | 236,923          | 251,16           |
|  | NOV  | 176,79           | 159,05           | 137,769               | 115,418  | 130,013          | 240,331          | 251,16           |
|  | DEC  | 172,886          | 159,63           | 139,739               | 115,468  | 130,068          | 235,114          | 242,164          |
| 2022   | JAN  | 182,828          | 168,341          | 154,287               | 127,012  | 132,882          | 229,342          | 237,296          |
|  | FEB  | 190,394          | 171,295          | 158,117               | 128,531  | 135,08           | 233,447          | 239,388          |
|  | MAR  | 196,117          | 182,895          | 167,738               | 129,686  | 136,597          | 253,46           | 264,741          |
|  | APR  | 213,674          |                  | n/a !!                | 175,313  | 150,547          | 142,907          | 284,278          |
|  | MAY  | 215,041          |                  | n/a !!                | 179,641  | 159,219          | 143,006          | 275,575          |
|  | JUN  | 223,517          |                  | n/a !!                | 181,771  | 160,401          | 144,38           | 269,675          |
|  | JUL  | 234,014          |                  | n/a !!                | 192,403  | 181,641          | 145,282          | 238,358          |
|  | AUG  | 249,154          |                  | n/a !!                | 205,844  | 178,159          | 147,337          | 232,34           |
|  | SEP  | 249,085          |                  | n/a !!                | 206,656  | 180,006          | 149,459          | 227,525          |
|  | OCT  | 246,976          |                  | n/a !!                | 217,861  | 181,392          | 150,998          | 219,674          |
|  | NOV  | 246,788          |                  | n/a !!                | 222,695  | 178,972          | 152,053          | 208,896          |
|  | DEC  | 247,629          |                  | n/a !!                | 226,277  | 175,343          | 152,009          | 193,613          |
| 2023   | JAN  | 243,619          |                  | n/a !!                | 220,364  | 166,838          | 155,45           | 197,338          |
|  | FEB  | 240,797          |                  | n/a !!                | 216,654  | 165,452          | 156,11           | 188,479          |
|  | MAR  | 239,599          |                  | n/a !!                | 219,132  | 161,463          | 155,881          | 201,566          |
|  | APR  | 237,43           |                  | n/a !!                | 217,613  | 151,6            | 155,252          | 202,808          |
|  | MAY  | 238,608          |                  | n/a !!                | 215,874  | 149,014          | 154,197          | 200,593          |
|  | JUN  | 239,252          |                  | n/a !!                | 215,492  | 147,943          | 153,351          | 191,241          |
|  | JUL  | 234,38           |                  | n/a !!                | 205,853  | 144,886          | 153,362          | 185,525          |
|  | AUG  | 234,35           |                  | n/a !!                | 202,204  | 145,8            | 152,889          | 184,261          |
|  | SEP  | 231,776          |                  | n/a !!                | 200,007  | 148,358          | 153,043          | 185,659          |
|  | OCT  | 227,28           |                  | n/a !!                | 189,833  | 152,182          | 152,031          | 181,364          |
|  | NOV  | 223,349          |                  | n/a !!                | 188,381  | 153,179          | 151,713          | 181,42           |
|  | DEC  | 224,21           |                  | n/a !!                | 179,364  | 153,622          | 151,383          | 181,655          |
| 2024   | JAN  | 205,94           |                  | n/a !!                | 170,04   | 153,908          | 149,668          | 183,802          |
|  | FEB  | 205,267          |                  | n/a !!                | 165,865  | 154,112          | 149,36           | 186,711          |
|  | MAR  | 204,485          |                  | n/a !!                | 166,974  | 156,06           | 149,613          | 183,847          |
|  | APR  | 200,286          |                  | n/a !!                | 157,335  | 154,472          | 148,162          | 183,053          |
|  | MAY  | 196,474          |                  | n/a !!                | 158,577  | 152,727          | 147,766          | 182,169          |
|  | JUN  | 196,949          |                  | n/a !!                | 154,545  | 153,604          | 159,276          | 179,641          |
|  | JUL  | 216,665          |                  | n/a !!                | 160,65   | 153,567          | 148,184          | 178,288          |
|  | AUG  | 215,773          |                  | n/a !!                | 160,86   | 155,377          | 148,778          | 181,58           |
|  | SEP  | 217,823          |                  | n/a !!                | 165,732  | 154,37           |                  | 180,322          |
|  | OCT  |                  |                  |                       |  |                  |                  |                  |
|  | NOV  |                  |                  |                       |  |                  |                  |                  |
|  | DEC  |                  |                  |                       |  |                  |                  |                  |



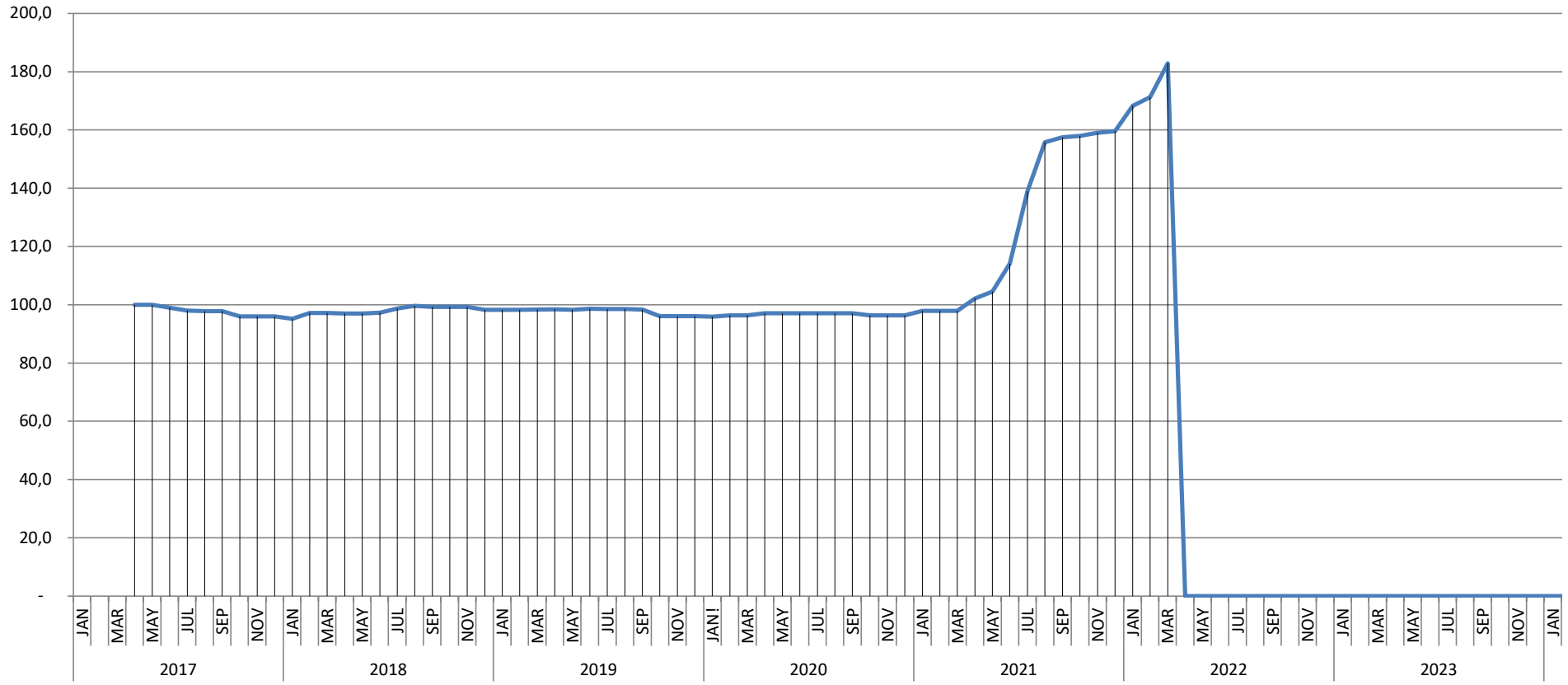
T&D EUROPE  
**GOES CONV.**  
BASIS APR 2017 = 100

- Provisional
- Complete
- Amended



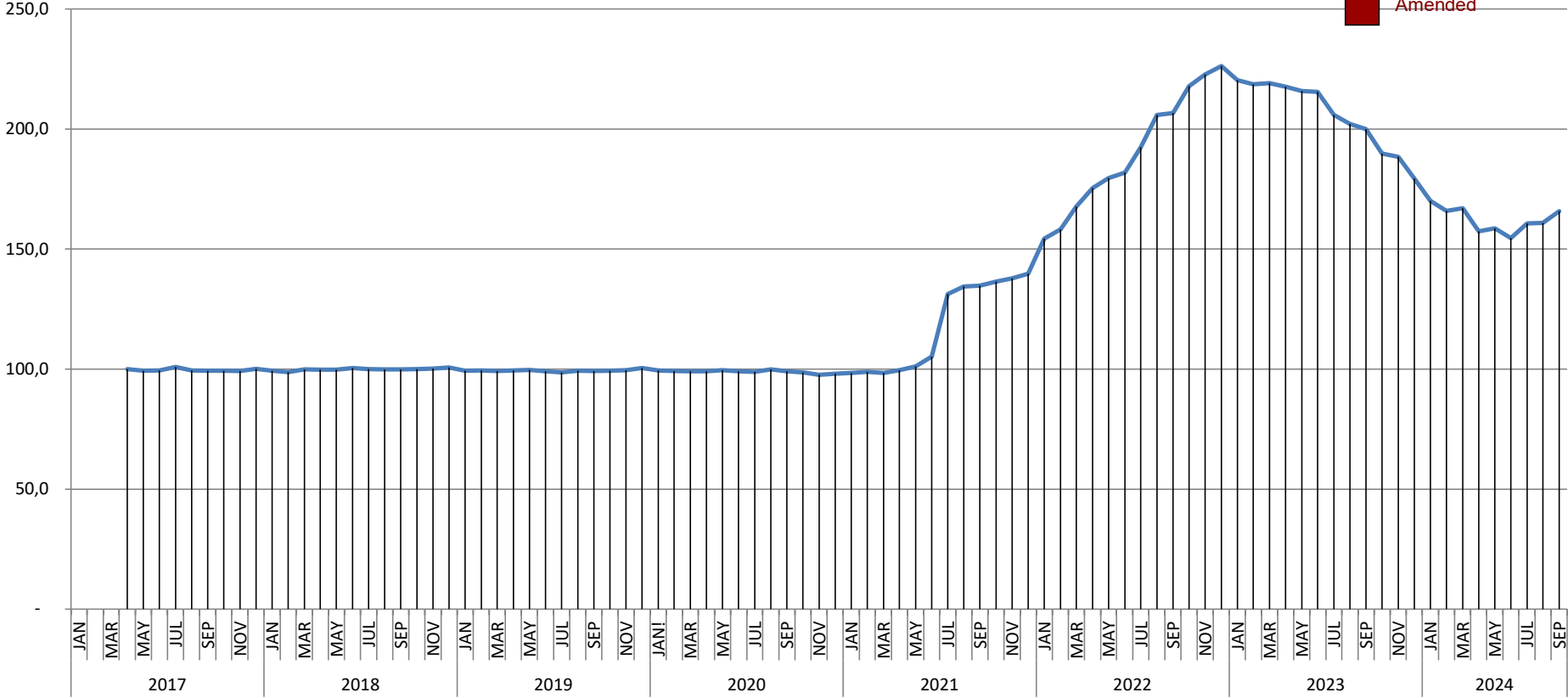
# T&D EUROPE GOES HIGH GRADE BASIS APR 2017 = 100

- Provisions
- Complete
- Amended



**T&D EUROPE  
GOES SUPER HIGH GRADE  
BASIS APR 2017 = 100**

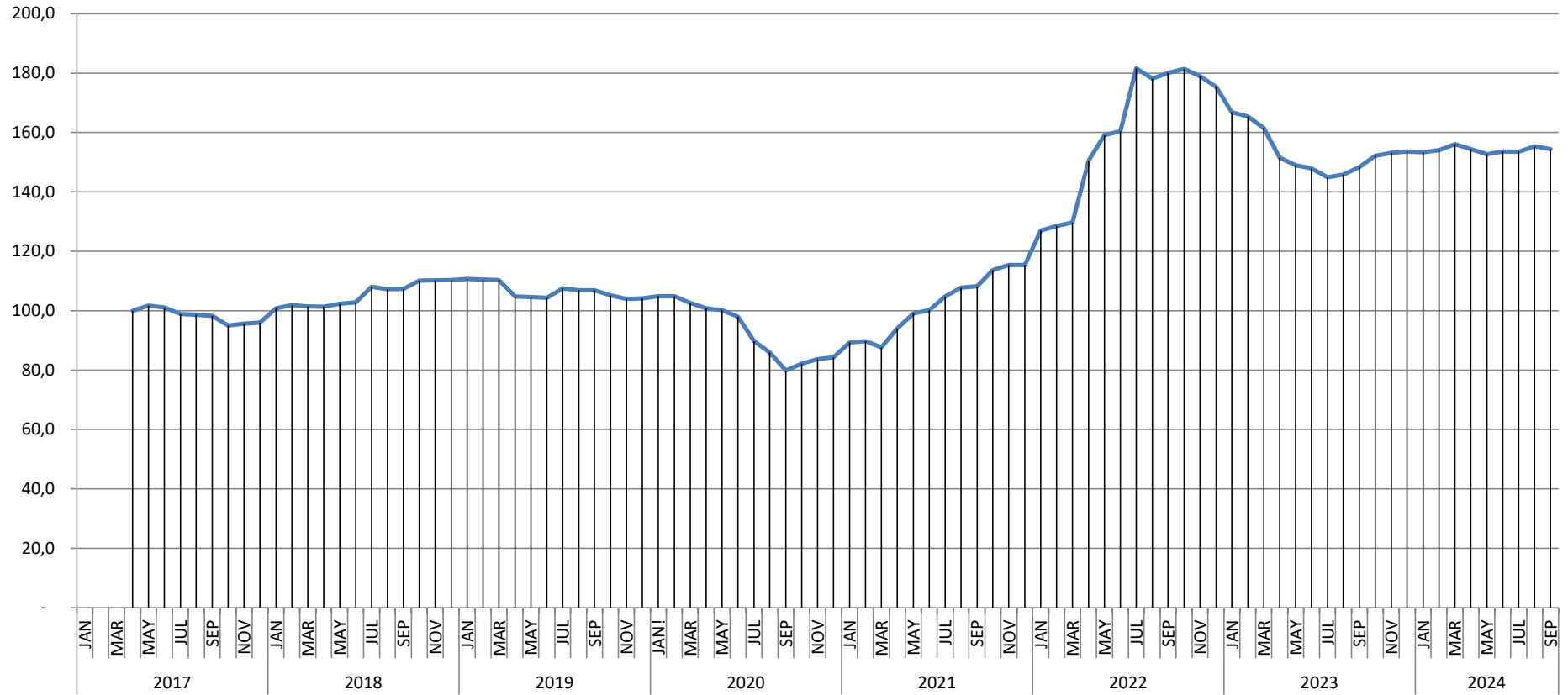
- Provisional
- Complete
- Amended





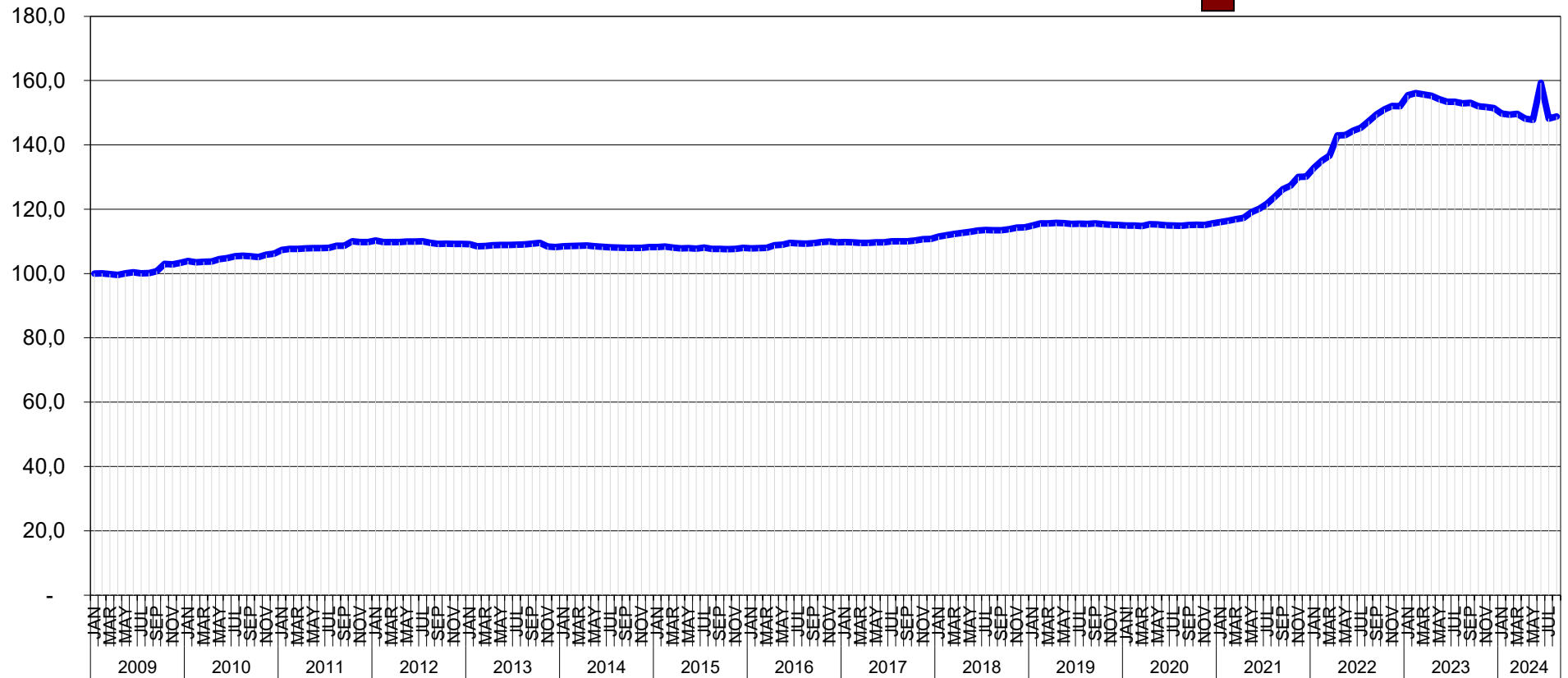
# T&D EUROPE MINERAL OIL BASIS APR 2017 = 100

- Provisional
- Complete
- Amended



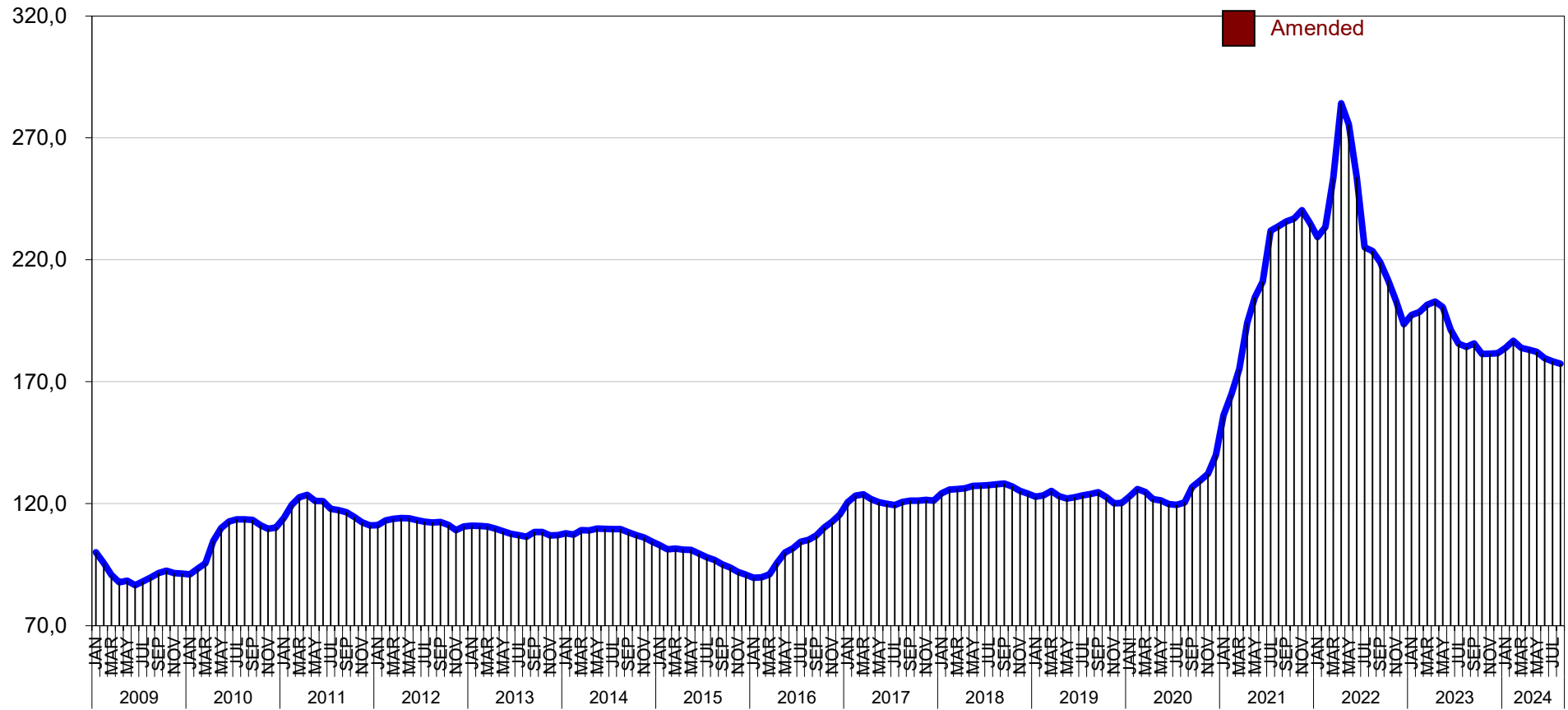
T&D EUROPE  
**PAPER**  
BASIS JAN 2009 = 100

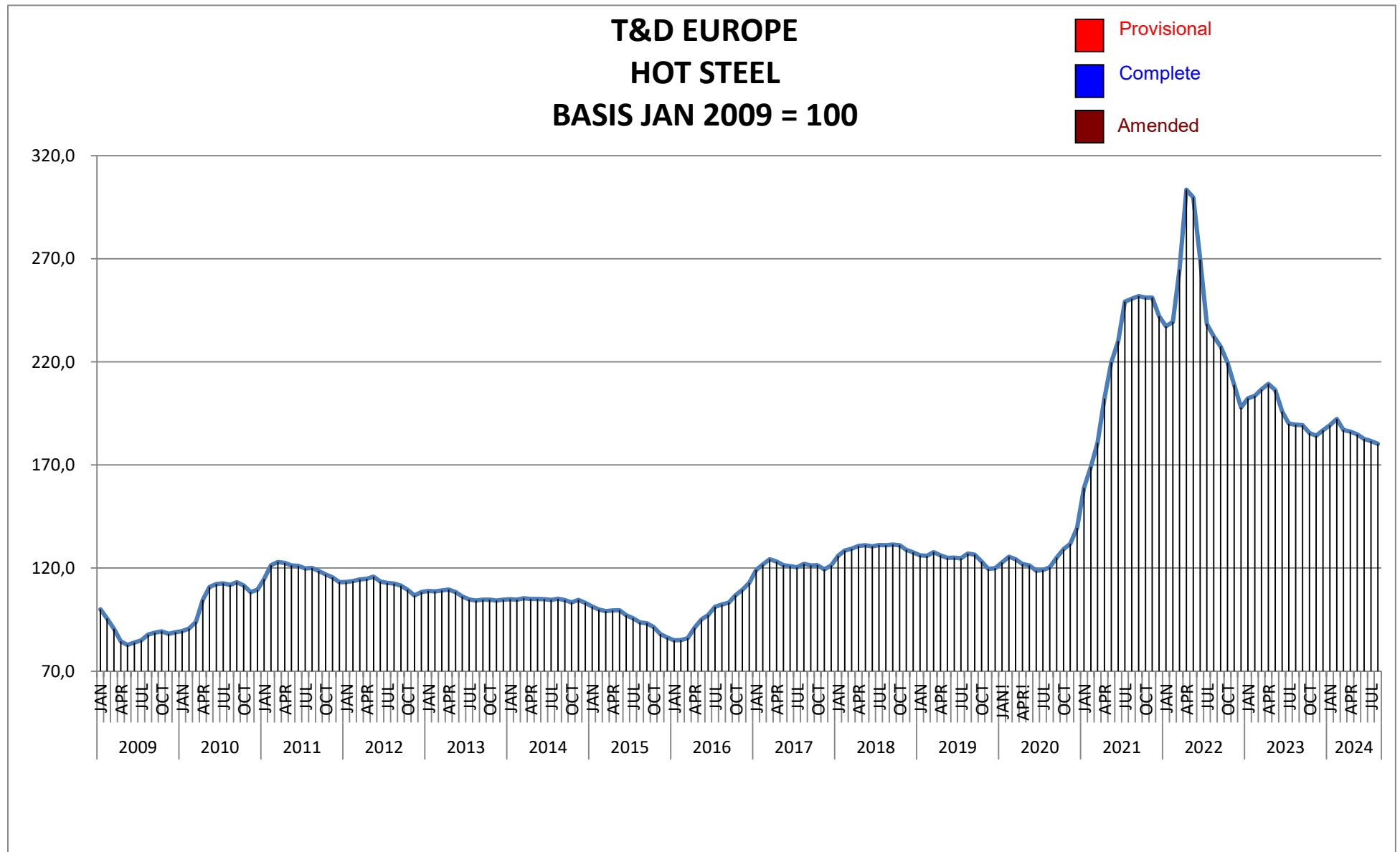
- Provisional
- Complete
- Amended



T&D EUROPE  
**COLD STEEL**  
 BASIS JAN 2009 = 100

- Provisional
- Complete
- Amended





January 2009 - September 2024

PUBLICATION DATE: 31st October 2024