



TRANSFORMER COMMODITIES INDICES

MONTHLY

STATISTICS

FOR THE PERIOD

January 2009 - October 2024

PUBLICATION DATE: 29th November 2024

The indices are published monthly, usually in the last week of the month following the month of reference in compliance with EU market statistical rules (e.g. data for September 2021, is published in the last week October 2021). The indices for paper, cold steel and hot steel are lagging one month behind as these are based on data from national statistical offices, which become available after the deadline for the T&D Europe indices.

IMPORTANT

Each operator on the market remains free, autonomous and independent to set its respective prices. The indices do not affect the freedom of markets players to set and change their prices and T&D Europe will not give any instructions on how to use the indices.

In April 2020, the December 2019 - March 2020 indices for GOES High Grade have been updated due to a change in the number of reporting organisations. **Following a quality check in October 2024 the Mineral Oil index for the period January 2023 to August 2024 has been updated, following the discovery of a data entry error.** The issue has been resolved and a robust process has been put in place to avoid its reoccurrence.

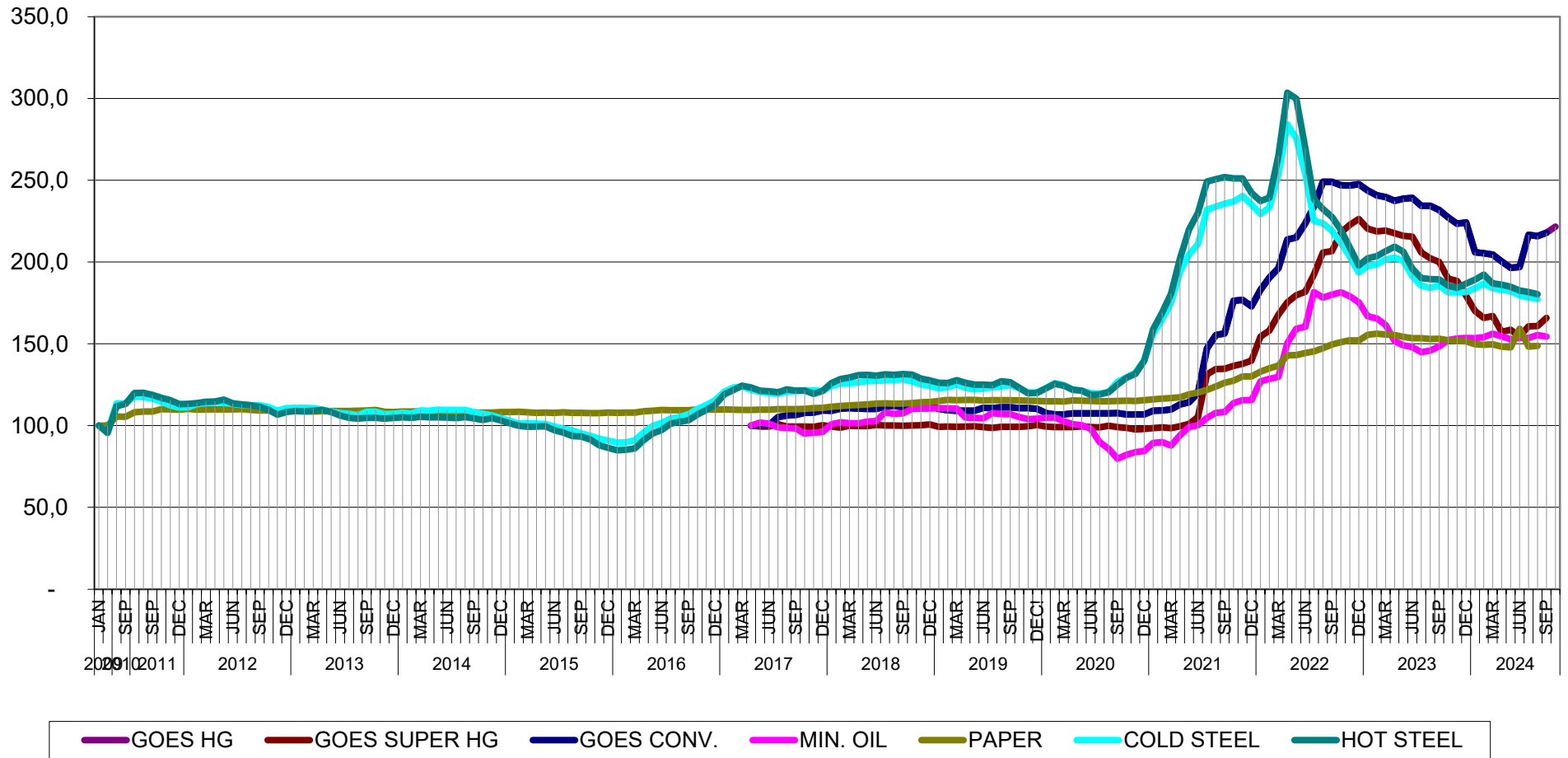
We have stopped publishing the **Aluminium and Copper indices** after December 2012, as information is readily available from other sources.

| T&F EUROPE | | | | | | | | |
|---|------|------------------|------------------|-----------------------|------------------|-------------------|------------------|------------------|
| TRANSFORMER COMMODITY INDICES | | | | | | | | |
| BASE APR-2017 = 100 [Goes Conv., Goes High Grade, Goes Super High Grade, Mineral Oil] ¹ The number of reporting organisations has changed and a linking factor has been applied to the series. | | | | | | | | |
| BASE JAN-2009 = 100 [Paper, Cold Steel, Hot Steel] | | | | | | | | |
| ! due to an insufficient number of respondents, we are not able to provide the High Grade indices. | | GOES CONV. | GOES HIGH GRADE | GOES SUPER HIGH GRADE | MIN. OIL | PAPER | COLD STEEL | HOT STEEL |
| 2018 | NOV | 112,119240487112 | 99,2450414566737 | 100,21221891197 | 110,25719167013 | 114,27970083325 | 125,24203043634 | 128,789994102788 |
| | DEC | 112,227680362623 | 98,2289465127622 | 100,635636452679 | 110,368010343076 | 114,334665194258 | 124,155838836182 | 127,590666561045 |
| | JAN | 110,143465955301 | 98,2685742155747 | 99,2051993633433 | 110,659832848502 | 114,946968175886 | 122,791107886447 | 126,202656386153 |
| 2019 | FEB | 109,353174675489 | 98,2682355172601 | 99,4250042621776 | 110,470499480683 | 115,5815866688084 | 123,407 | 125,984 |
| | MAR | 108,990750078619 | 98,4057470330028 | 99,146022935967 | 110,333841252251 | 115,525193253689 | 125,242 | 127,719 |
| | APR | 109,069 | 98,439 | 99,396 | 104,816 | 115,733 | 123,038 | 126,157 |
| | MAY | 109,101 | 98,277 | 99,58 | 104,613 | 115,634 | 122,054 | 124,932 |
| | JUN | 110,869 | 98,612 | 99,07 | 104,345 | 115,381 | 122,847 | 125,062 |
| | JUL | 110,695 | 98,541 | 98,539 | 107,54 | 115,48 | 123,374 | 124,758 |
| | AUG | 111,183 | 98,541 | 99,284 | 106,875 | 115,436 | 123,933 | 127,046 |
| | SEP | 111,173 | 98,378 | 99,141 | 106,875 | 115,535 | 124,649 | 126,472 |
| | OCT | 110,63 | 96,123 | 99,192 | 105,139 | 115,326 | 122,725 | 123,153 |
| | NOV | 110,641 | 96,123 | 99,559 | 103,939 | 115,183 | 120,119 | 119,64 |
| | DEC | 110,186 | 96,1139275650595 | 100,365 | 104,16 | 115,073 | 120,219 | 119,944 |
| | 2020 | JAN | 107,583 | 95,8445056938558 | 99,427 | 104,881 | 114,876 | 122,949 |
| FEB | | 106,867 | 96,344320596306 | 99,121 | 104,871 | 114,876 | 125,992 | 125,496 |
| MAR | | 106,835 | 96,4442835767961 | 99,029 | 102,664 | 114,711 | 124,727 | 124,303 |
| APR | | 107,421 | 97,126 | 99,033 | 100,799 | 115,304 | 121,819 | 121,982 |
| MAY | | 107,421 | 97,126 | 99,518 | 100,217 | 115,249 | 121,304 | 121,299 |
| JUN | | 107,431 | 97,126 | 99,039 | 98,019 | 114,996 | 119,805 | 118,74 |
| JUL | | 107,507 | 97,126 | 98,614 | 89,732 | 114,907 | 119,515 | 119,087 |
| AUG | | 107,507 | 97,126 | 99,855 | 85,894 | 114,832 | 120,488 | 120,399 |
| SEP | | 107,659 | 97,126 | 99,059 | 79,845 | 115,04 | 126,819 | 125,029 |
| OCT | | 106,857 | 96,406 | 98,549 | 82,089 | 115,194 | 129,359 | 129,172 |
| NOV | | 106,857 | 96,406 | 97,631 | 83,733 | 115,084 | 132,256 | 131,698 |
| DEC | | 106,857 | 96,406 | 97,978 | 84,342 | 115,557 | 139,907 | 139,473 |
| 2021 | JAN | 109,112 | 97,958 | 98,345 | 89,329 | 115,997 | 156,139 | 158,851 |
| | FEB | 109,21 | 97,958 | 98,814 | 89,819 | 116,415 | 164,808 | 169,088 |
| | MAR | 109,828 | 97,958 | 98,386 | 87,685 | 116,843 | 175,155 | 180,702 |
| | APR | 112,843 | 102,21 | 99,478 | 93,983 | 117,261 | 194,071 | 202,227 |
| | MAY | 114,176 | 104,566 | 101,028 | 99,1 | 119,064 | 204,531 | 219,761 |
| | JUN | 119,772 | 114,128 | 105,252 | 100,18 | 120,119 | 211,008 | 229,998 |
| | JUL | 147,077 | 138,935 | 131,229 | 104,761 | 121,702 | 231,937 | 249,137 |
| | AUG | 155,318 | 155,801 | 134,473 | 107,808 | 123,879 | 233,783 | 250,666 |
| | SEP | 156,294 | 157,508 | 134,718 | 108,279 | 126,198 | 235,651 | 251,891 |
| | OCT | 176,323 | 157,938 | 136,412 | 113,654 | 127,363 | 236,923 | 251,16 |
| | NOV | 176,79 | 159,05 | 137,769 | 115,418 | 130,013 | 240,331 | 251,16 |
| | DEC | 172,886 | 159,63 | 139,739 | 115,468 | 130,068 | 235,114 | 242,164 |
| 2022 | JAN | 182,828 | 168,341 | 154,287 | 127,012 | 132,882 | 229,342 | 237,296 |
| | FEB | 190,394 | 171,295 | 158,117 | 128,531 | 135,08 | 233,447 | 239,388 |
| | MAR | 196,117 | 182,895 | 167,738 | 129,686 | 136,597 | 253,46 | 264,741 |
| | APR | 213,674 | | n/a !! | 175,313 | 150,547 | 142,907 | 284,278 |
| | MAY | 215,041 | | n/a !! | 179,641 | 159,219 | 143,006 | 275,575 |
| | JUN | 223,517 | | n/a !! | 181,771 | 160,401 | 144,38 | 269,675 |
| | JUL | 234,014 | | n/a !! | 192,403 | 181,641 | 145,282 | 238,358 |
| | AUG | 249,154 | | n/a !! | 205,844 | 178,159 | 147,337 | 232,34 |
| | SEP | 249,085 | | n/a !! | 206,656 | 180,006 | 149,459 | 227,525 |
| | OCT | 246,976 | | n/a !! | 217,861 | 181,392 | 150,998 | 219,674 |
| | NOV | 246,788 | | n/a !! | 222,695 | 178,972 | 152,053 | 208,896 |
| | DEC | 247,629 | | n/a !! | 226,277 | 175,343 | 152,009 | 193,613 |
| 2023 | JAN | 243,619 | | n/a !! | 220,364 | 166,838 | 155,45 | 197,338 |
| | FEB | 240,797 | | n/a !! | 218,654 | 165,452 | 156,11 | 198,479 |
| | MAR | 239,599 | | n/a !! | 219,132 | 161,463 | 155,881 | 201,566 |
| | APR | 237,43 | | n/a !! | 217,613 | 151,6 | 155,252 | 202,808 |
| | MAY | 238,608 | | n/a !! | 215,874 | 149,014 | 154,197 | 200,593 |
| | JUN | 239,252 | | n/a !! | 215,492 | 147,943 | 153,351 | 191,241 |
| | JUL | 234,38 | | n/a !! | 205,853 | 144,886 | 153,362 | 185,525 |
| | AUG | 234,35 | | n/a !! | 202,204 | 145,8 | 152,889 | 184,261 |
| | SEP | 231,776 | | n/a !! | 200,007 | 148,358 | 153,043 | 185,659 |
| | OCT | 227,28 | | n/a !! | 189,833 | 152,182 | 152,031 | 181,364 |
| | NOV | 223,349 | | n/a !! | 188,381 | 153,179 | 151,713 | 181,42 |
| | DEC | 224,21 | | n/a !! | 179,364 | 153,622 | 151,383 | 181,655 |
| 2024 | JAN | 205,94 | | n/a !! | 170,04 | 153,308 | 149,668 | 183,802 |
| | FEB | 205,267 | | n/a !! | 165,865 | 154,112 | 149,36 | 186,711 |
| | MAR | 204,485 | | n/a !! | 166,974 | 156,06 | 149,613 | 183,847 |
| | APR | 200,286 | | n/a !! | 157,335 | 154,472 | 148,162 | 183,053 |
| | MAY | 196,474 | | n/a !! | 158,577 | 152,727 | 147,766 | 182,169 |
| | JUN | 196,949 | | n/a !! | 154,545 | 153,604 | 159,276 | 179,641 |
| | JUL | 216,665 | | n/a !! | 160,65 | 153,567 | 148,184 | 178,288 |
| | AUG | 215,773 | | n/a !! | 160,86 | 155,377 | 148,778 | 177,415 |
| | SEP | 217,823 | | n/a !! | 165,732 | 154,37 | 148,778 | 175,726 |
| | OCT | 221,626 | | n/a !! | 166,868 | 150,169 | | |
| | NOV | | | | | | | |
| | DEC | | | | | | | |

T&D EUROPE
TRANSFORMER COMMODITIES INDICES

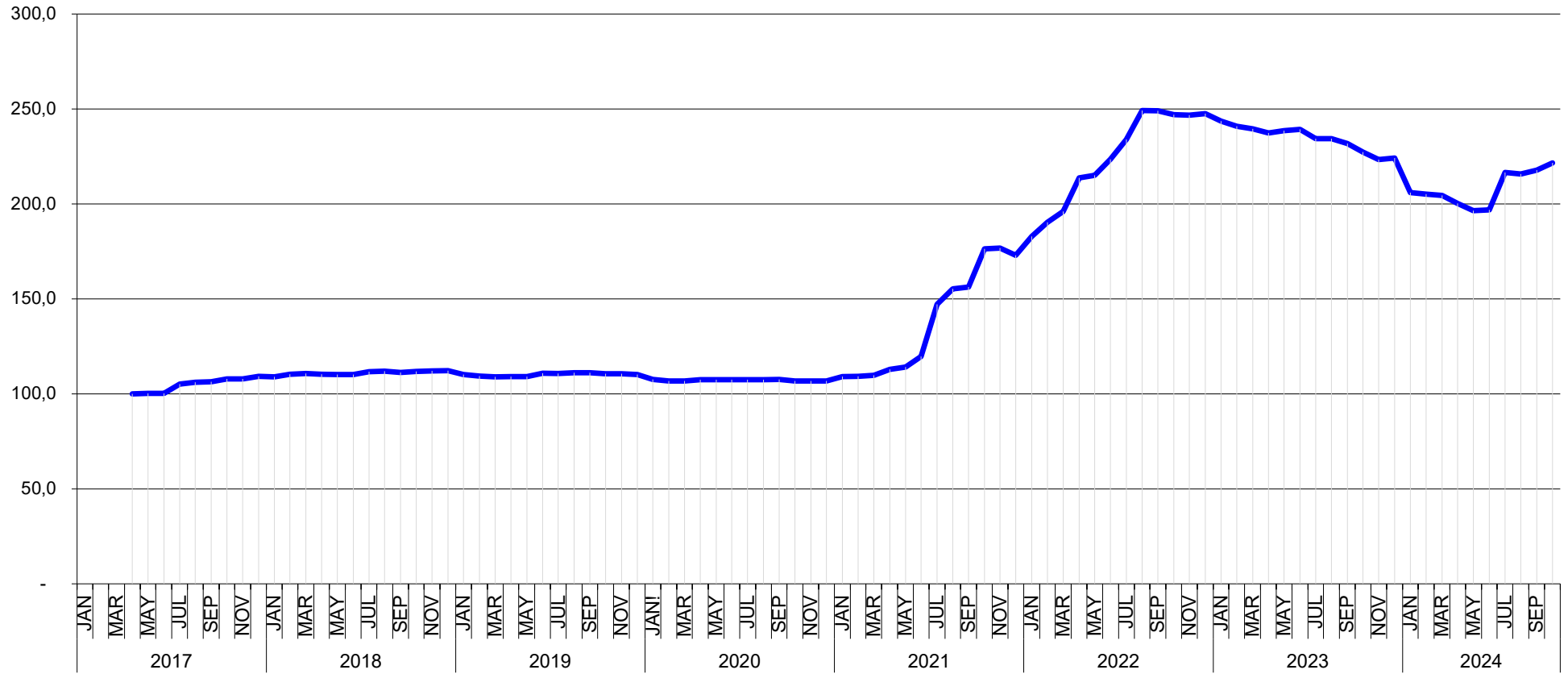
BASE APR-2017 = 100 [Goes Conv., Goes High Grade, Goes Super High Grade, Mineral Oil]

BASE JAN-2009 = 100 [Paper, Cold Steel, Hot Steel]



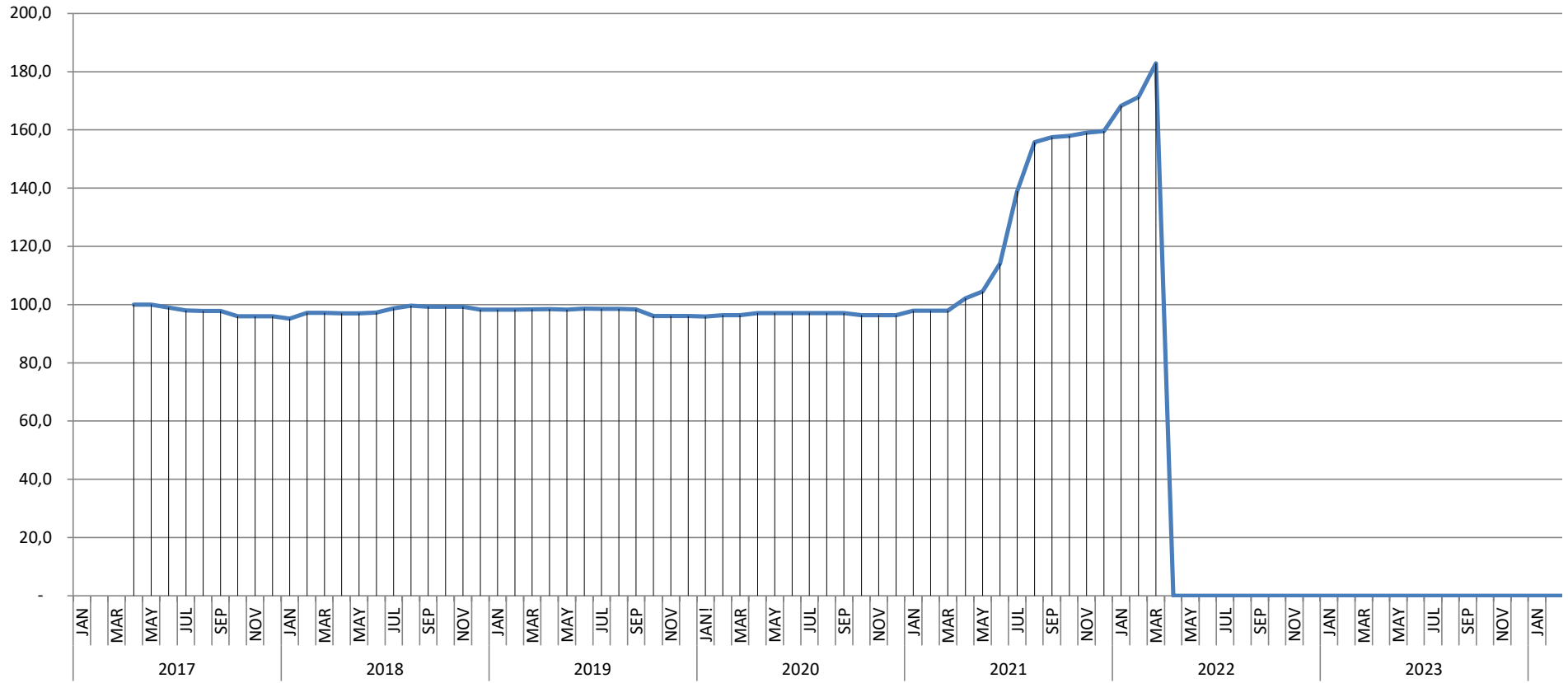
T&D EUROPE
GOES CONV.
BASIS APR 2017 = 100

- Provisional
- Complete
- Amended



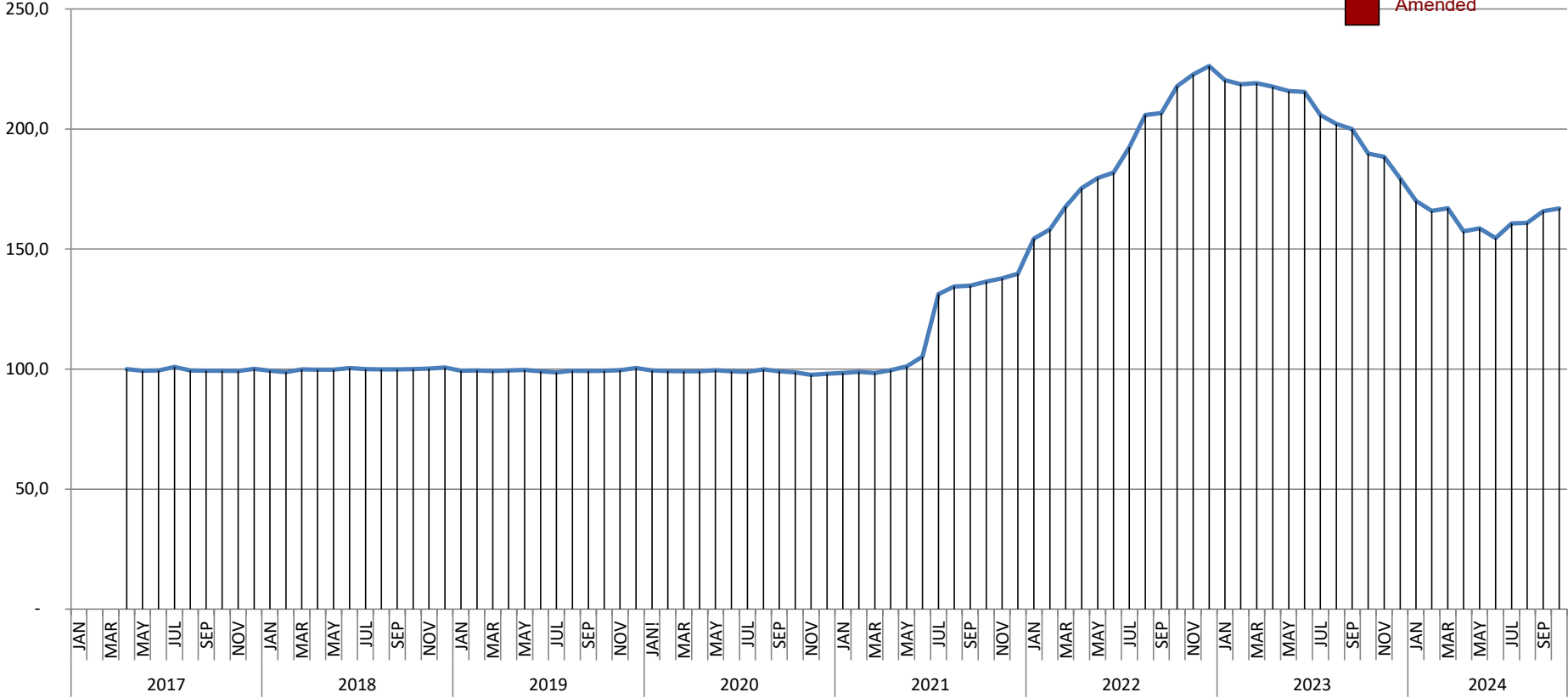
T&D EUROPE GOES HIGH GRADE BASIS APR 2017 = 100

- Provisions
- Complete
- Amended



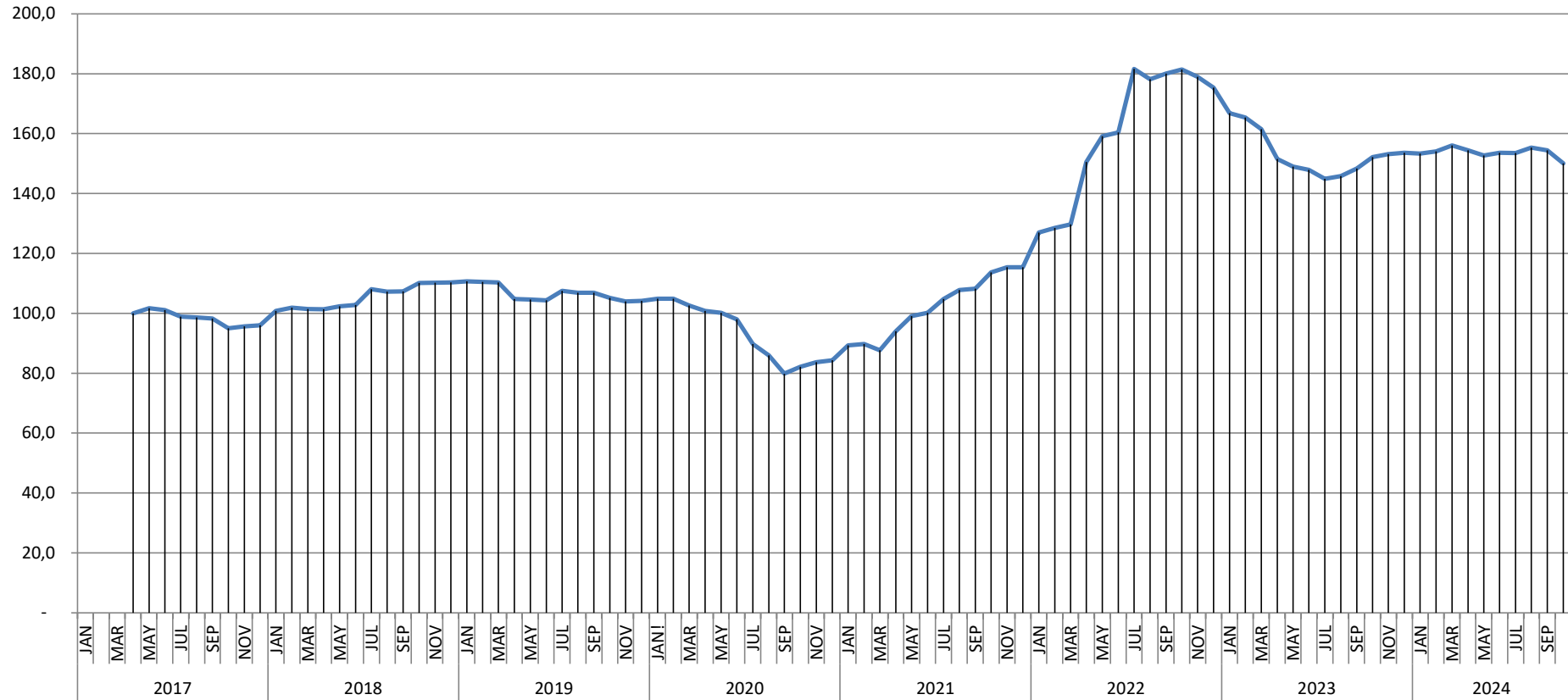
**T&D EUROPE
GOES SUPER HIGH GRADE
BASIS APR 2017 = 100**

- Provisional
- Complete
- Amended



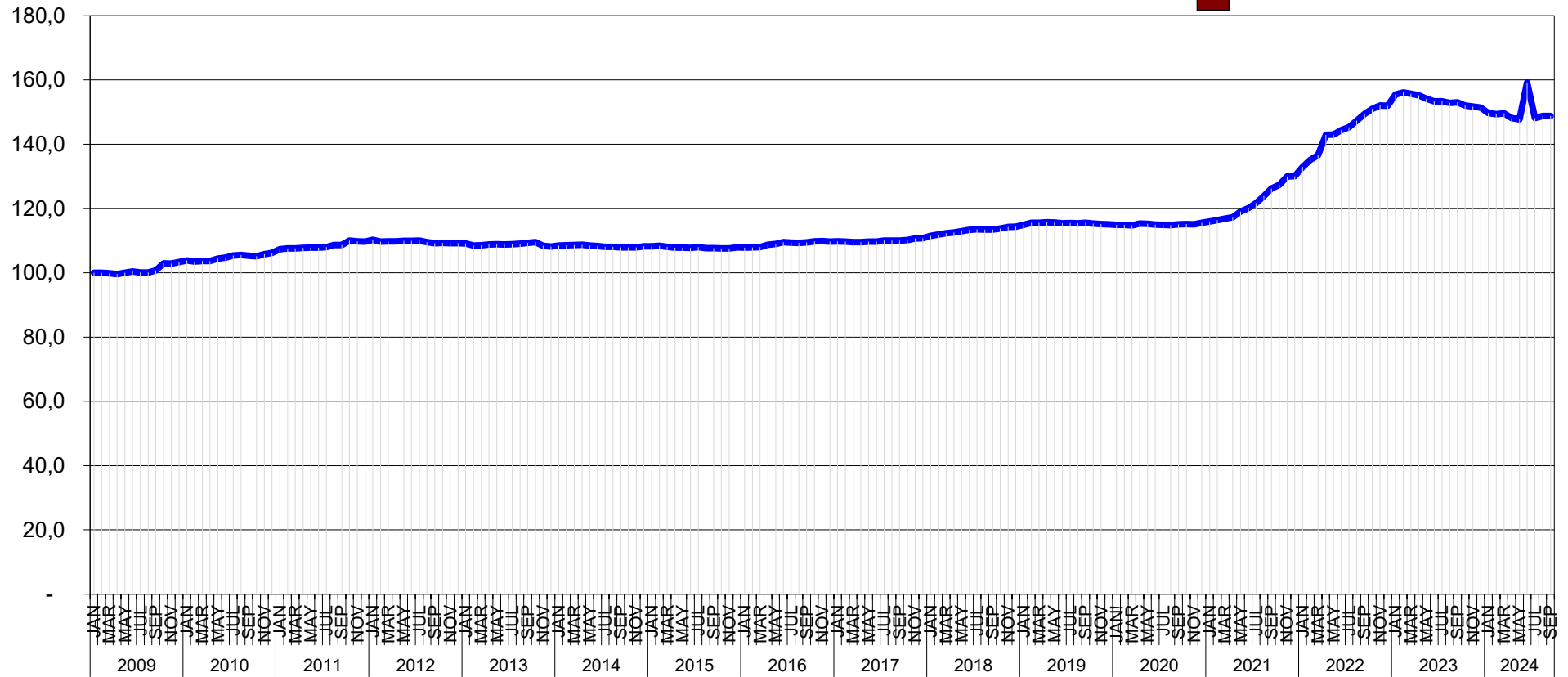
T&D EUROPE MINERAL OIL BASIS APR 2017 = 100

- Provisional
- Complete
- Amended



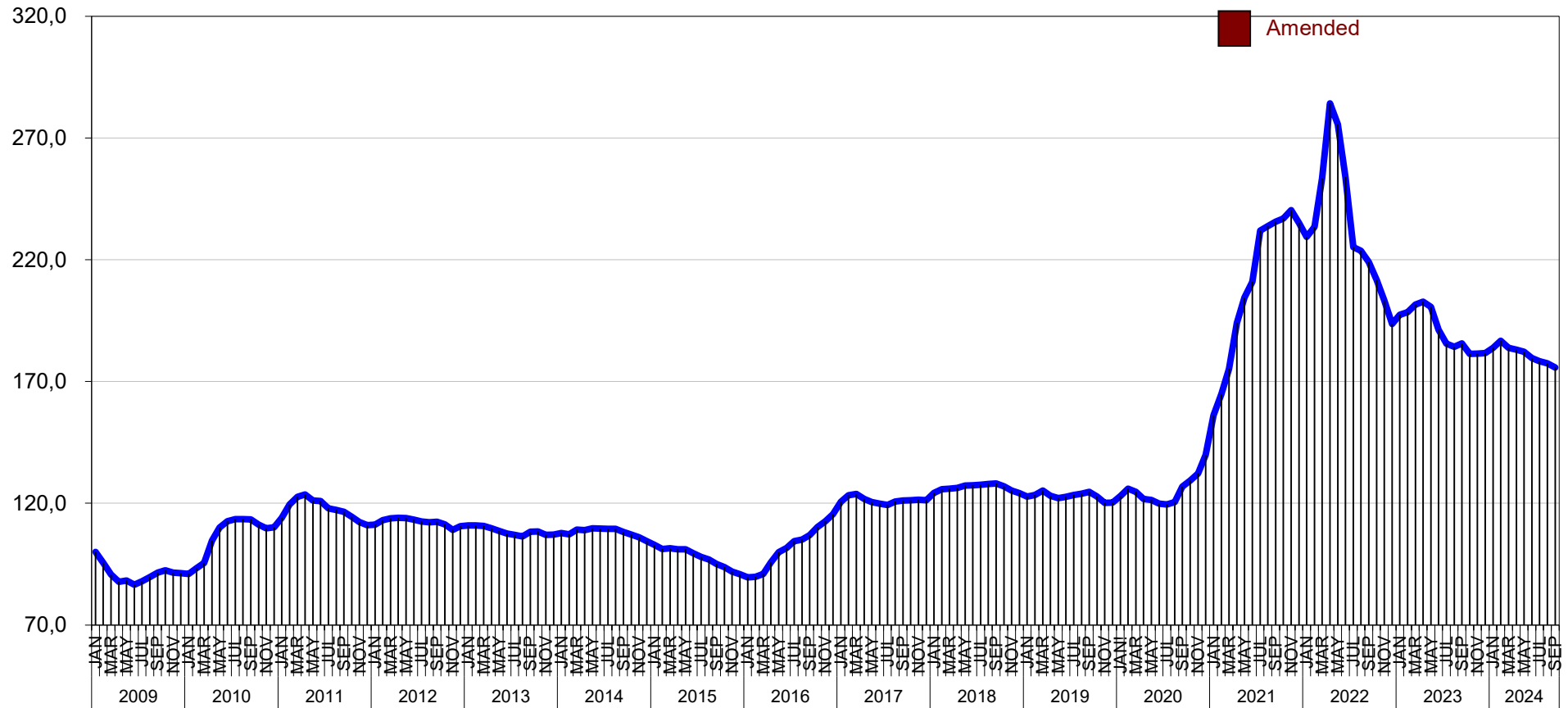
T&D EUROPE
PAPER
BASIS JAN 2009 = 100

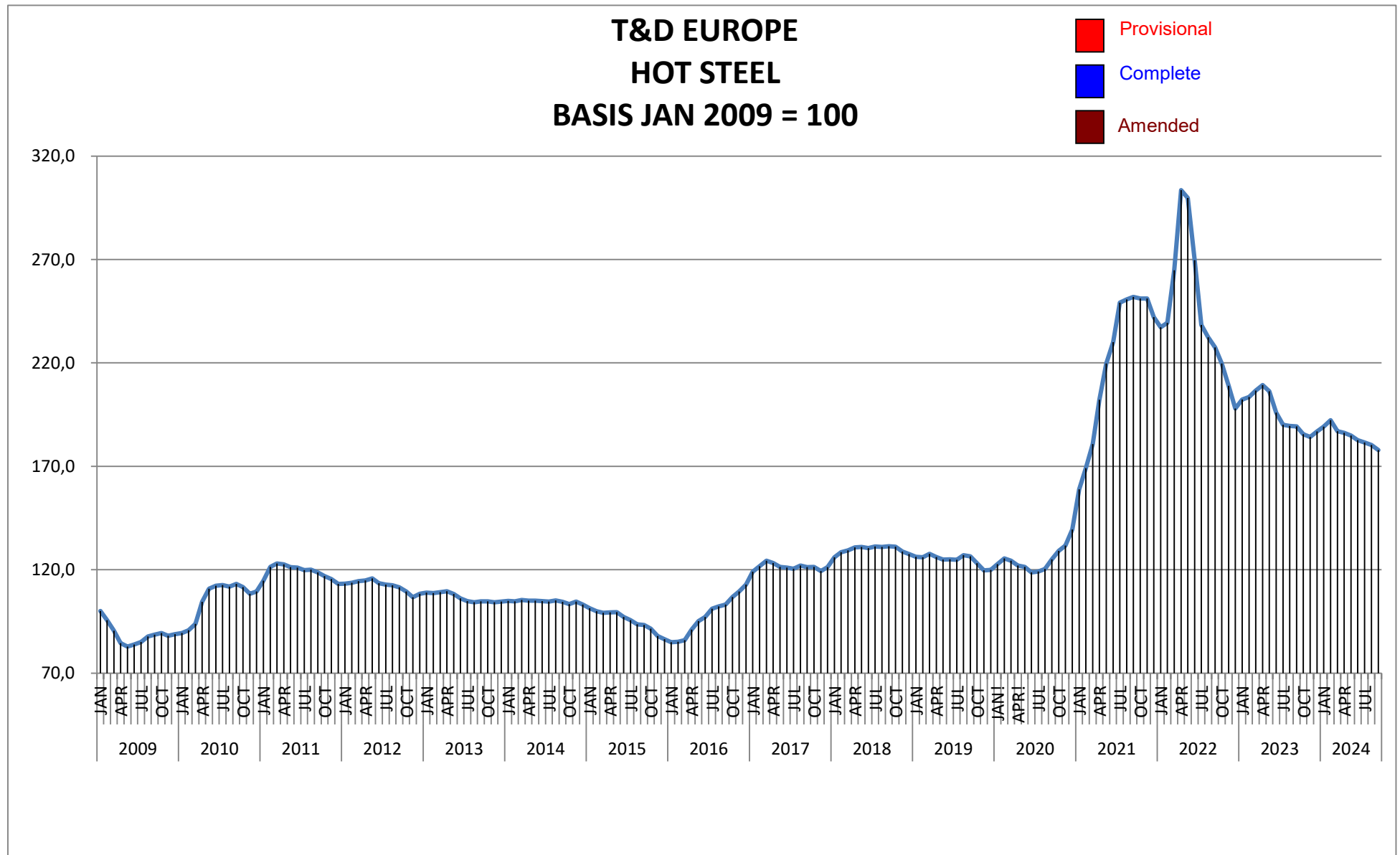
- Provisional
- Complete
- Amended



T&D EUROPE
COLD STEEL
 BASIS JAN 2009 = 100

- Provisional
- Complete
- Amended





January 2009 - October 2024

PUBLICATION DATE: 29th November 2024