



TRANSFORMER COMMODITIES INDICES

MONTHLY

STATISTICS

FOR THE PERIOD

January 2009 - March 2024

PUBLICATION DATE: 30 April 2024

The indices are published monthly, usually in the last week of the month following the month of reference in compliance with EU market statistical rules (e.g. data for September 2021, is published in the last week October 2021). The indices for paper, cold steel and hot steel are lagging one month behind as these are based on data from national statistical offices, which become available after the deadline for the T&D Europe indices.

IMPORTANT

Each operator on the market remains free, autonomous and independent to set its respective prices. The indices do not affect the freedom of markets players to set and change their prices and T&D Europe will not give any instructions on how to use the indices.

In January 2024 we have been made aware of a reporting error. We will correct the series. Until then we can not report a value for mineral oil.

In April 2020, the December 2019 - March 2020 indices for GOES High Grade have been updated due to a change in the number of reporting organisations.

We have stopped publishing the **Aluminium and Copper indices** after December 2012, as information is readily available from other sources.

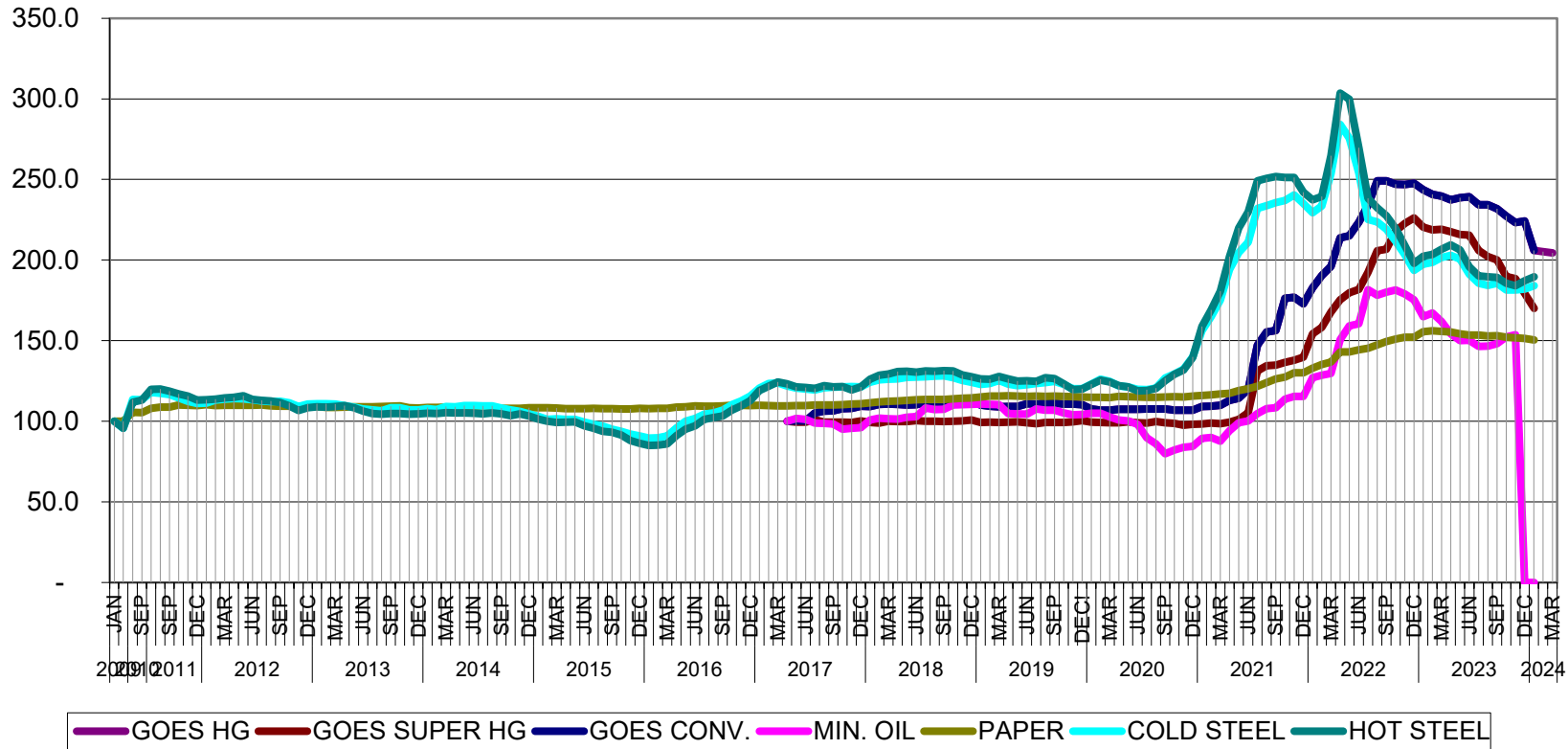
T&D EUROPE								
TRANSFORMER COMMODITY INDICES								
number of reporting organisations has changed and a linking factor has been applied to the series. BASE JAN-2009 = 100 [Paper, Cold Steel, Hot Steel]								
		GOES CONV.	GOES HIGH GRADE	GOES SUPER HIGH GRADE	MIN. OIL	PAPER	COLD STEEL	HOT STEEL
2009	JAN					100.0	100.0	100.0
	FEB					100.0	95.6	95.5
	MAR					99.8	90.7	90.5
	APR					99.6	87.7	84.5
	MAY					100.0	88.3	82.8
	JUN					100.4	86.6	83.8
	JUL					100.1	88.0	85.0
	AUG					100.1	89.7	87.8
	SEP					100.7	91.5	88.6
	OCT					102.9	92.5	89.4
	NOV					102.8	91.5	88.1
	DEC					103.3	91.3	88.8
2010	JAN					103.9	91.0	89.4
	FEB					103.5	93.3	90.7
	MAR					103.7	95.4	93.8
	APR					103.7	104.7	104.5
	MAY					104.4	110.0	110.8
	JUN					104.8	112.7	112.2
	JUL					105.3	113.5	112.6
	AUG					105.5	113.5	111.8
	SEP					105.3	113.3	113.2
	OCT					105.1	111.2	111.6
	NOV					105.8	109.7	108.4
	DEC					106.2	110.1	109.5
2011	JAN					107.3	114.0	114.7
	FEB					107.6	119.5	121.4
	MAR					107.6	122.6	123.0
	APR					107.8	123.6	122.5
	MAY					107.9	121.1	121.2
	JUN					107.9	120.9	121.0
	JUL					108.0	117.9	119.8
	AUG					108.6	117.3	120.0
	SEP					108.6	116.5	118.6
	OCT					110.0	114.5	116.9
	NOV					109.8	112.3	115.5
	DEC					109.7	111.0	113.1
2012	JAN					110.3	111.2	113.2
	FEB					109.7	113.1	113.7
	MAR					109.8	113.8	114.5
	APR					109.8	114.0	114.8
	MAY					109.9	113.9	115.9
	JUN					109.9	113.3	113.5
	JUL					110.0	112.5	112.9
	AUG					109.5	112.2	112.5
	SEP					109.2	112.4	111.5
	OCT					109.3	111.3	109.5
	NOV					109.2	109.1	106.7
	DEC					109.2	110.6	108.3
2013	JAN					109.1	110.9	108.9
	FEB					108.5	110.9	108.7
	MAR					108.5	110.7	109.1
	APR					108.8	109.7	109.6
	MAY					108.9	108.6	108.3
	JUN					108.8	107.6	106.2
	JUL					108.9	107.1	104.8
	AUG					109.0	106.4	104.3
	SEP					109.3	108.3	104.7
	OCT					109.5	108.4	104.7
	NOV					108.4	107.0	104.3
	DEC					108.2	107.1	104.6
2014	JAN					108.5	107.8	105.0
	FEB					108.6	107.3	104.7
	MAR					108.7	109.1	105.4
	APR					108.7	109.0	105.0
	MAY					108.4	109.7	105.0
	JUN					108.3	109.6	104.8
	JUL					108.1	109.5	104.6
	AUG					108.1	109.5	105.1
	SEP					107.9	108.2	104.4
	OCT					107.9	107.1	103.3
	NOV					107.9	106.1	104.6
	DEC					108.2	104.5	103.1
2015	JAN					108.3	103.0	101.4
	FEB					108.4	101.2	99.9
	MAR					108.1	101.5	99.2
	APR					107.8	101.1	99.4
	MAY					107.9	101.0	99.5
	JUN					107.7	99.4	97.2
	JUL					108.0	98.0	95.6
	AUG					107.7	96.9	93.6
	SEP					107.7	95.1	93.2
	OCT					107.6	93.8	91.5
	NOV					107.6	92.0	88.0
	DEC					107.9	90.9	86.3
2016	JAN					107.8	89.6	85.0
	FEB					107.9	89.7	85.1
	MAR					108.0	90.9	85.9
	APR					108.8	95.8	91.1
	MAY					109.0	99.9	95.1
	JUN					109.5	101.6	97.2
	JUL					109.4	104.4	101.2
	AUG					109.3	105.1	102.3
	SEP					109.4	106.9	103.2
	OCT					109.8	110.2	106.8
	NOV					109.9	112.6	109.5
	DEC					109.7	115.5	112.8
2017	JAN					109.8	120.6	119.0
	FEB					109.7	123.3	121.7
	MAR					109.5	123.8	124.3
	APR	100.000	100.000	100.000	100.000	109.500	121.800	123.200
	MAY	100.163	100.000	99.378	101.734	109.665	120.519	121.335
	JUN	100.235	98.979	99.412	101.080	109.673	119.865	120.967
	JUL	105.145	98.013	100.828	98.896	110.000	119.348	120.410
	AUG	106.172	97.843	99.390	98.620	110.000	120.707	122.027
	SEP	106.435	97.843	99.317	98.286	109.999	121.160	121.249
	OCT	107.814	96.028	99.326	95.043	110.222	121.249	121.389
	NOV	107.878	96.028	99.160	95.673	110.649	121.472	119.327
	DEC	109.272	96.028	100.098	96.045	110.759	121.194	121.212
JAN	109.007	95.216	99.302	100.808	111.458	124.213	125.963	
FEB	110.347	97.141	98.774	101.875	111.890	125.712	128.463	

T&D EUROPE									
TRANSFORMER COMMODITY INDICES									
number of reporting organisations has changed and a linking factor has been applied to the series.									
BASE JAN-2009 = 100 [Paper, Cold Steel, Hot Steel]									
		GOES CONV.	GOES HIGH GRADE	GOES SUPER HIGH GRADE	MIN. OIL	PAPER	COLD STEEL	HOT STEEL	
2018	MAR	110.663	97.139	99.916	101.427	112.269	125.992	129.341	
	APR	110.378	97.047	99.745	101.371	112.588	126.281	130.752	
	MAY	110.115	97.047	99.705	102.369	112.918	127.249	131.036	
	JUN	110.188	97.217	100.370	102.766	113.355	127.332	130.483	
	JUL	111.646	98.734	99.968	108.084	113.517	127.625	131.227	
	AUG	111.985	99.572	99.947	107.179	113.407	127.902	131.029	
	SEP	111.325	99.234	99.853	107.373	113.459	128.167	131.381	
	OCT	111.700	99.245	100.027	110.128	113.788	126.984	131.100	
	NOV	112.119	99.245	100.212	110.257	114.280	125.242	128.790	
	DEC	112.228	98.229	100.636	110.368	114.335	124.156	127.591	
	2019	JAN	110.143	98.269	99.205	110.660	114.947	122.791	126.203
		FEB	109.353	98.268	99.425	110.470	115.582	123.407	125.984
MAR		108.991	98.406	99.146	110.334	115.525	125.242	127.719	
APR		109.069	98.439	99.396	104.816	115.733	123.038	126.157	
MAY		109.101	98.277	99.580	104.613	115.634	122.054	124.932	
JUN		110.869	98.612	99.070	104.345	115.381	122.647	125.062	
JUL		110.695	98.541	98.539	107.540	115.480	123.374	124.758	
AUG		111.183	98.541	99.284	106.875	115.436	123.933	127.046	
SEP		111.173	98.378	99.141	106.875	115.535	124.649	126.472	
OCT		110.630	96.123	99.192	105.139	115.326	122.725	123.153	
NOV		110.641	96.123	99.559	103.939	115.183	120.119	119.640	
DEC		110.186	96.114	100.365	104.160	115.073	120.219	119.944	
2020	JAN	107.583	95.845	99.427	104.881	114.876	122.949	122.709	
	FEB	106.867	96.344	99.121	104.871	114.876	125.992	125.496	
	MAR	106.835	96.444	99.029	102.664	114.711	124.727	124.303	
	APR	107.421	97.126	99.033	100.799	115.304	121.819	121.982	
	MAY	107.421	97.126	99.518	100.217	115.249	121.304	121.299	
	JUN	107.431	97.126	99.039	98.019	114.996	119.805	118.740	
	JUL	107.507	97.126	98.814	89.782	114.887	119.515	119.087	
	AUG	107.507	97.126	99.855	85.894	114.832	120.488	120.399	
	SEP	107.659	97.126	99.059	79.845	115.040	126.819	125.029	
	OCT	106.857	96.406	98.549	82.089	115.194	129.359	129.172	
	NOV	106.857	96.406	97.631	83.733	115.084	132.256	131.698	
	DEC	106.857	96.406	97.978	84.342	115.557	139.907	139.473	
2021	JAN	109.112	97.958	98.345	89.329	115.997	156.139	158.851	
	FEB	109.210	97.958	98.814	89.819	116.415	164.808	169.088	
	MAR	109.828	97.958	98.386	87.685	116.843	175.155	180.702	
	APR	112.843	102.210	99.478	93.983	117.261	194.071	202.227	
	MAY	114.176	104.566	101.028	99.100	119.064	204.531	219.761	
	JUN	119.772	114.128	105.252	100.180	120.119	211.008	229.998	
	JUL	147.077	138.935	131.229	104.761	121.702	231.937	249.137	
	AUG	155.318	155.801	134.473	107.808	123.879	233.783	250.666	
	SEP	156.294	157.508	134.718	108.279	126.198	235.651	251.891	
	OCT	176.323	157.938	136.412	113.654	127.363	236.923	251.160	
	NOV	176.790	159.050	137.789	115.419	130.013	240.331	251.160	
	DEC	172.886	159.630	139.739	115.468	130.068	235.114	242.164	
2022	JAN	182.828	188.341	154.287	127.012	132.882	229.342	237.296	
	FEB	190.394	171.295	158.117	128.531	135.080	233.447	239.388	
	MAR	196.117	182.895	167.738	129.686	136.597	253.460	264.741	
	APR	213.674	n/a !!	175.313	150.547	142.907	284.278	303.616	
	MAY	215.041	n/a !!	179.641	159.219	143.006	275.575	299.756	
	JUN	223.517	n/a !!	181.771	160.401	144.380	253.907	269.675	
	JUL	234.014	n/a !!	192.403	181.641	145.282	225.125	238.358	
	AUG	249.154	n/a !!	205.844	178.159	147.337	223.615	232.340	
	SEP	249.085	n/a !!	206.656	180.006	149.459	219.051	227.525	
	OCT	246.976	n/a !!	217.861	181.392	150.998	211.735	219.674	
	NOV	246.788	n/a !!	222.695	178.972	152.053	203.255	208.896	
	DEC	247.629	n/a !!	226.277	175.343	152.009	193.613	197.911	
2023	JAN	243.619	n/a !!	220.364	164.870	155.450	197.338	202.281	
	FEB	240.797	n/a !!	218.654	167.142	156.110	198.479	203.484	
	MAR	239.589	n/a !!	219.132	161.860	155.681	201.566	206.629	
	APR	237.430	n/a !!	217.613	154.158	155.252	202.808	209.318	
	MAY	238.608	n/a !!	215.874	149.938	154.197	200.593	206.293	
	JUN	239.252	n/a !!	215.492	150.289	153.351	191.241	195.915	
	JUL	234.380	n/a !!	205.853	146.484	153.362	185.525	190.114	
	AUG	234.350	n/a !!	202.204	146.622	152.889	184.261	189.528	
	SEP	231.776	n/a !!	200.007	148.183	153.043	185.659	189.279	
	OCT	227.280	n/a !!	189.633	152.357	152.031	181.364	185.527	
	NOV	223.349	n/a !!	188.381	153.613	151.713	181.420	184.150	
	DEC	224.210	n/a !!	179.364	n/a	151.383	181.923	187.110	
2024	JAN	205.940	n/a !!	170.000	n/a	150.459	184.104	189.550	
	FEB	205.267	n/a !!	165.865	n/a	150.240	186.935	192.760	
	MAR	204.485	n/a !!	166.974	n/a				
	APR								
	MAY								
	JUN								
	JUL								
	AUG								
	SEP								
	OCT								
	NOV								
	DEC								

T&D EUROPE
TRANSFORMER COMMODITIES INDICES

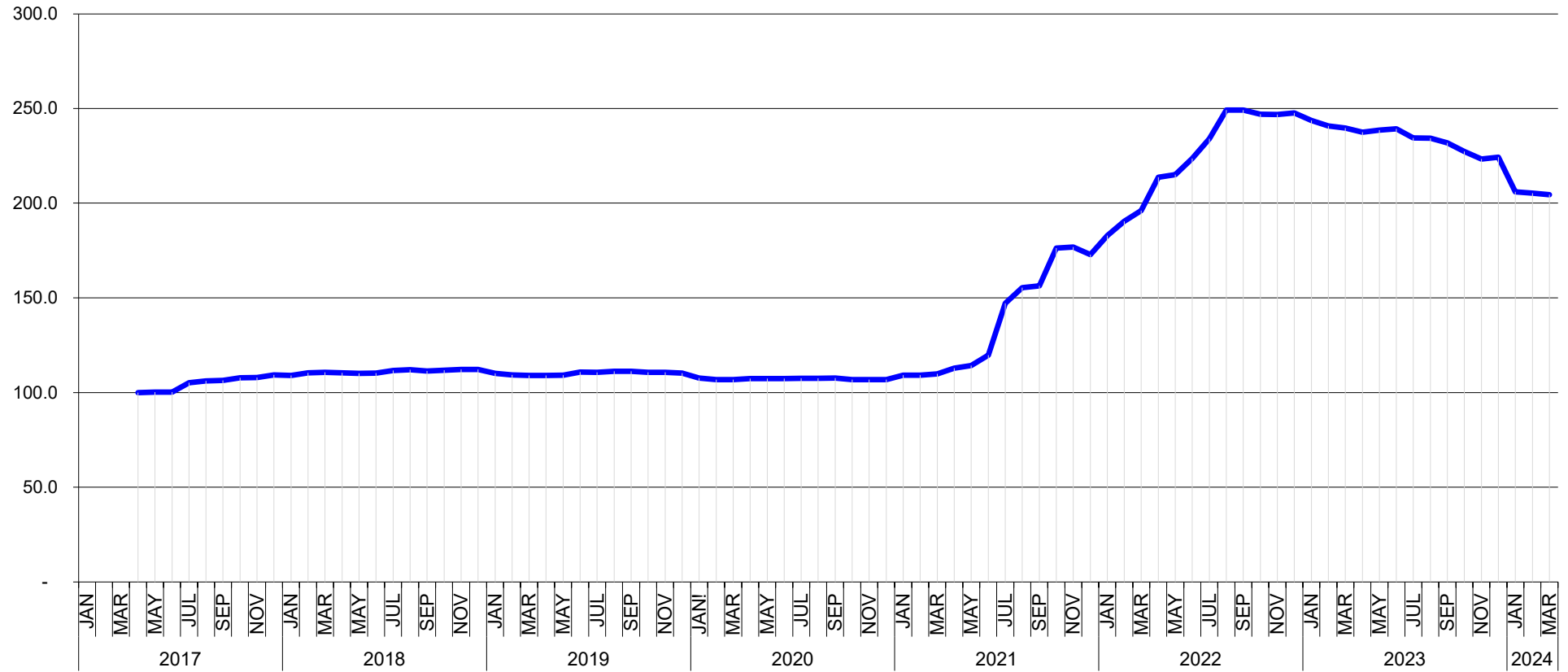
BASE APR-2017 = 100 [Goes Conv., Goes High Grade, Goes Super High Grade, Mineral Oil]

BASE JAN-2009 = 100 [Paper, Cold Steel, Hot Steel]



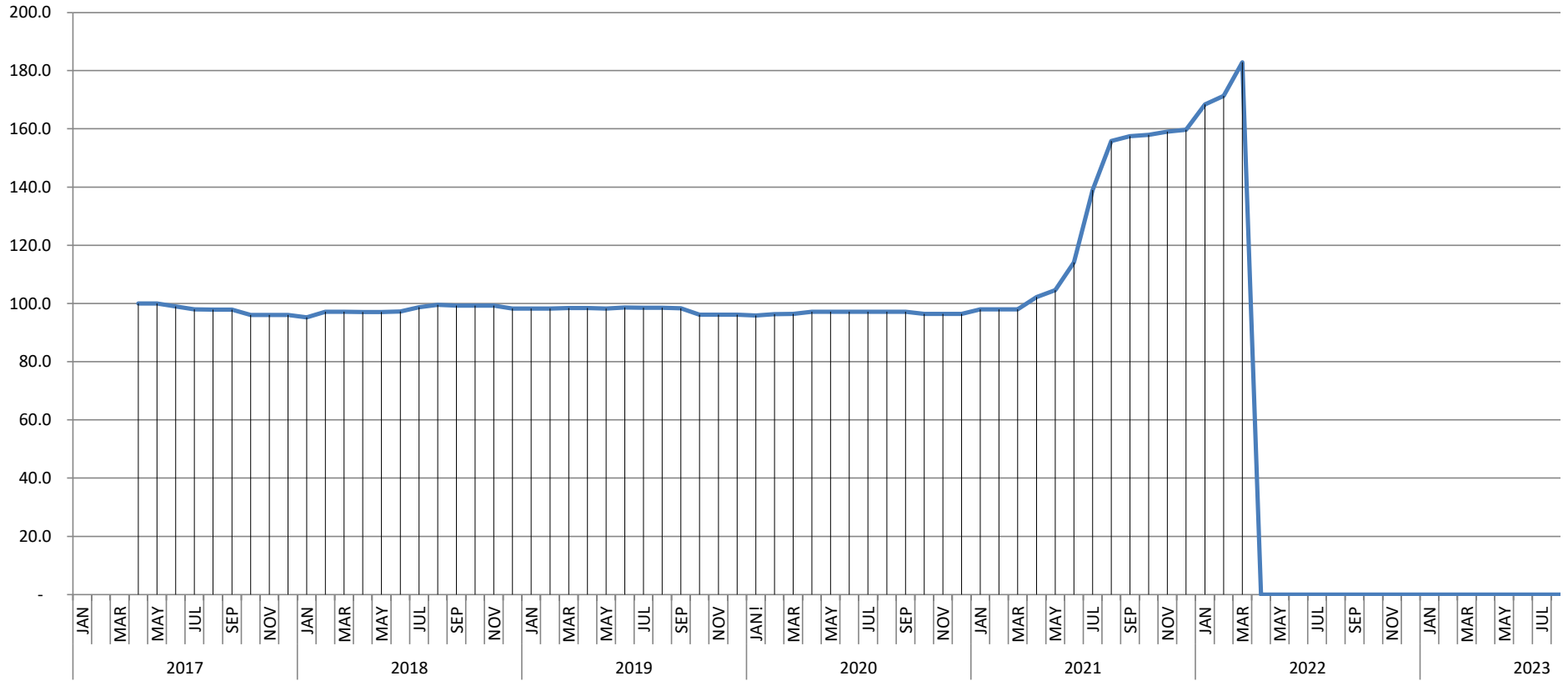
T&D EUROPE
GOES CONV.
BASIS APR 2017 = 100

- Provisional
- Complete
- Amended



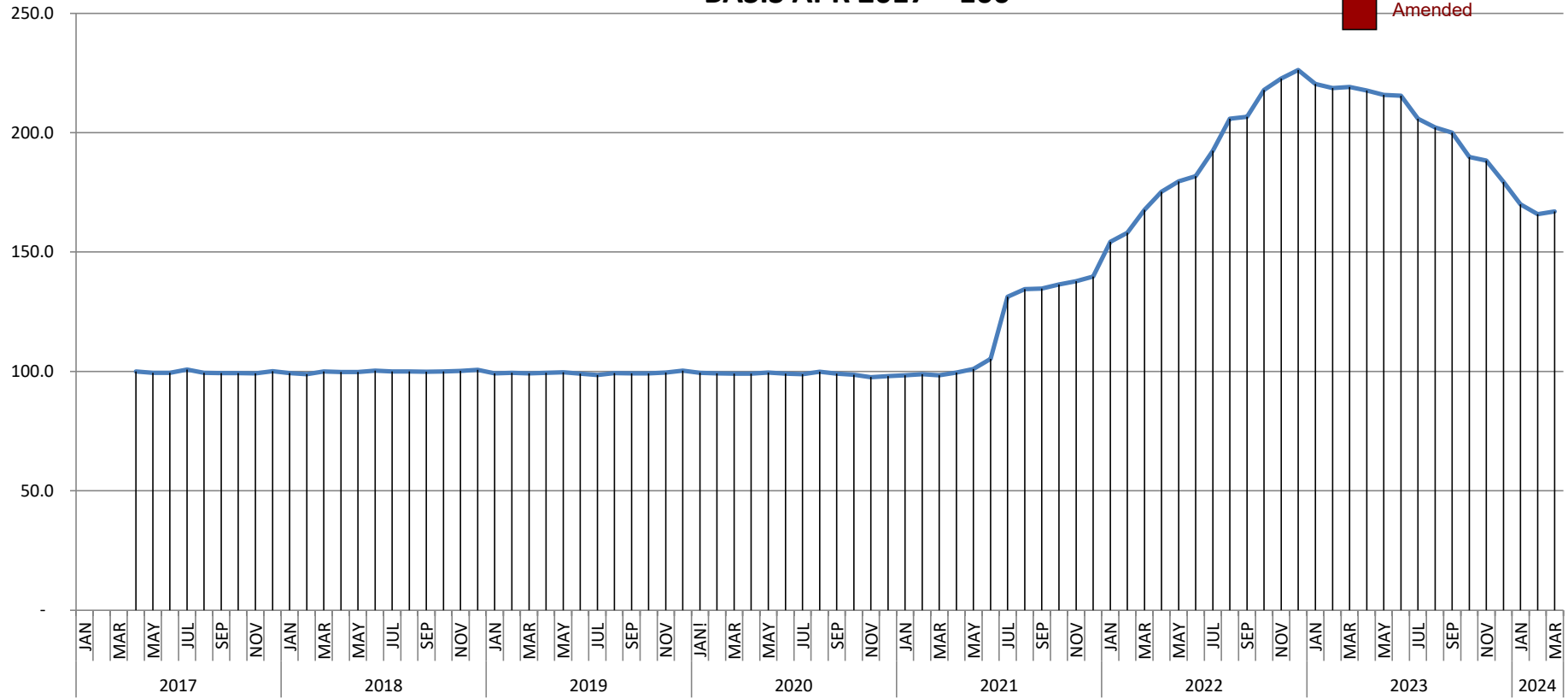
T&D EUROPE GOES HIGH GRADE BASIS APR 2017 = 100

- Provisiona
- Complete
- Amended



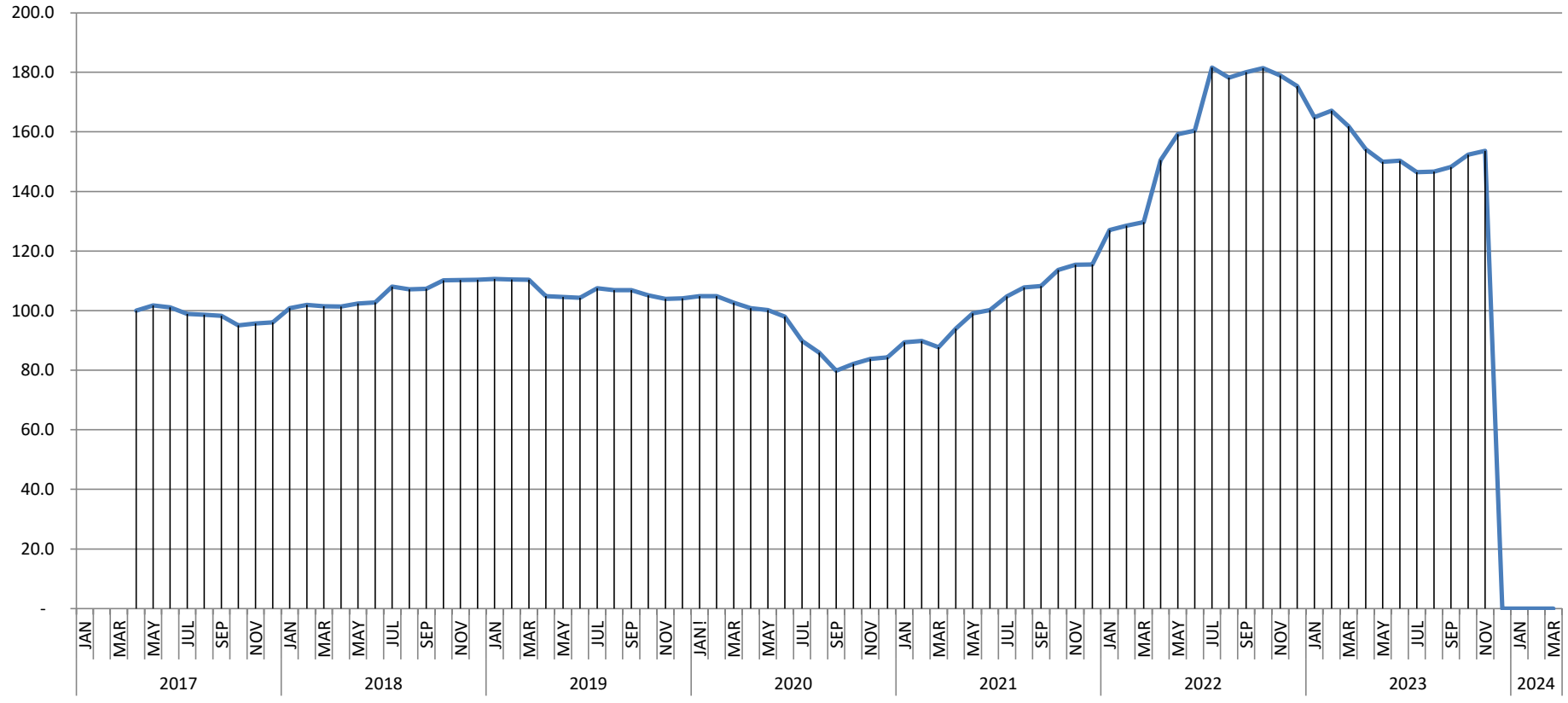
T&D EUROPE GOES SUPER HIGH GRADE BASIS APR 2017 = 100

- Provisional
- Complete
- Amended



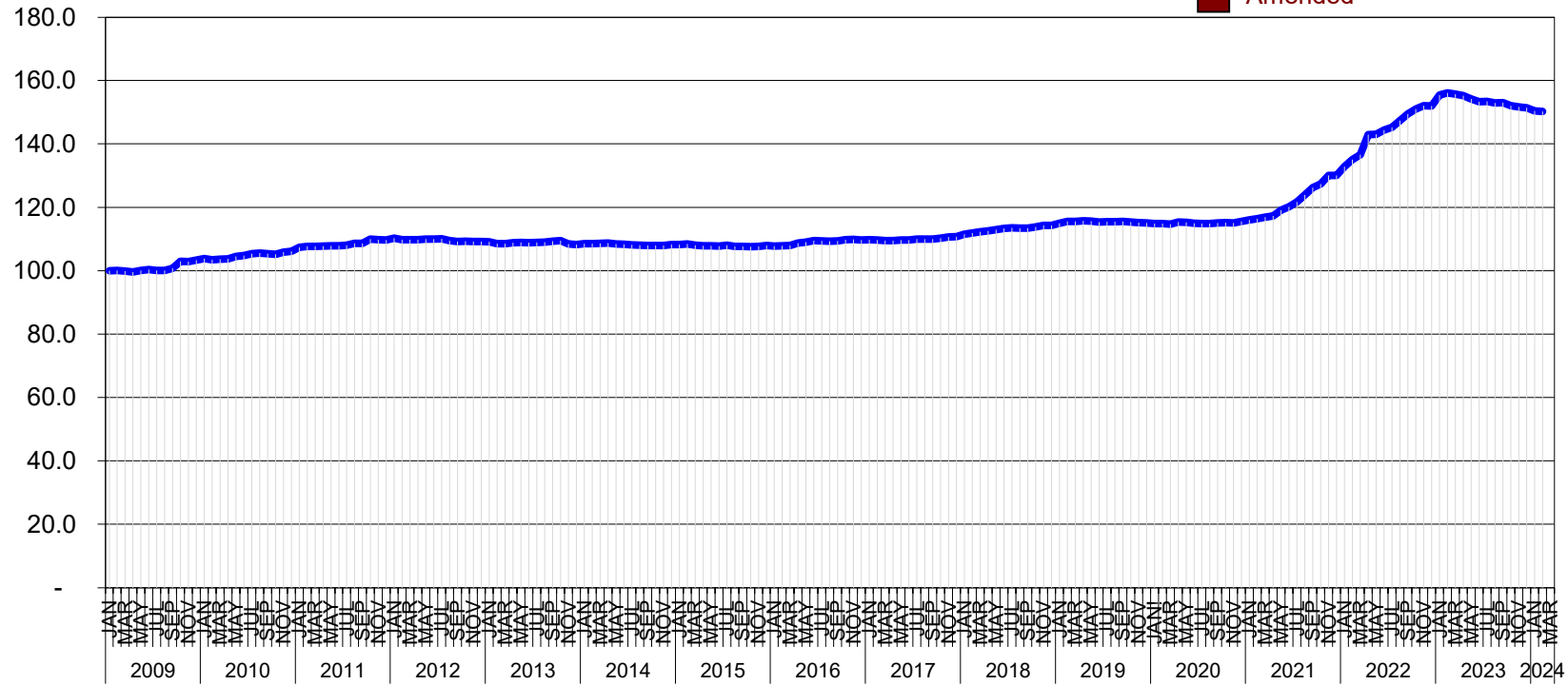
T&D EUROPE MINERAL OIL BASIS APR 2017 = 100

- Provisional
- Complete
- Amended



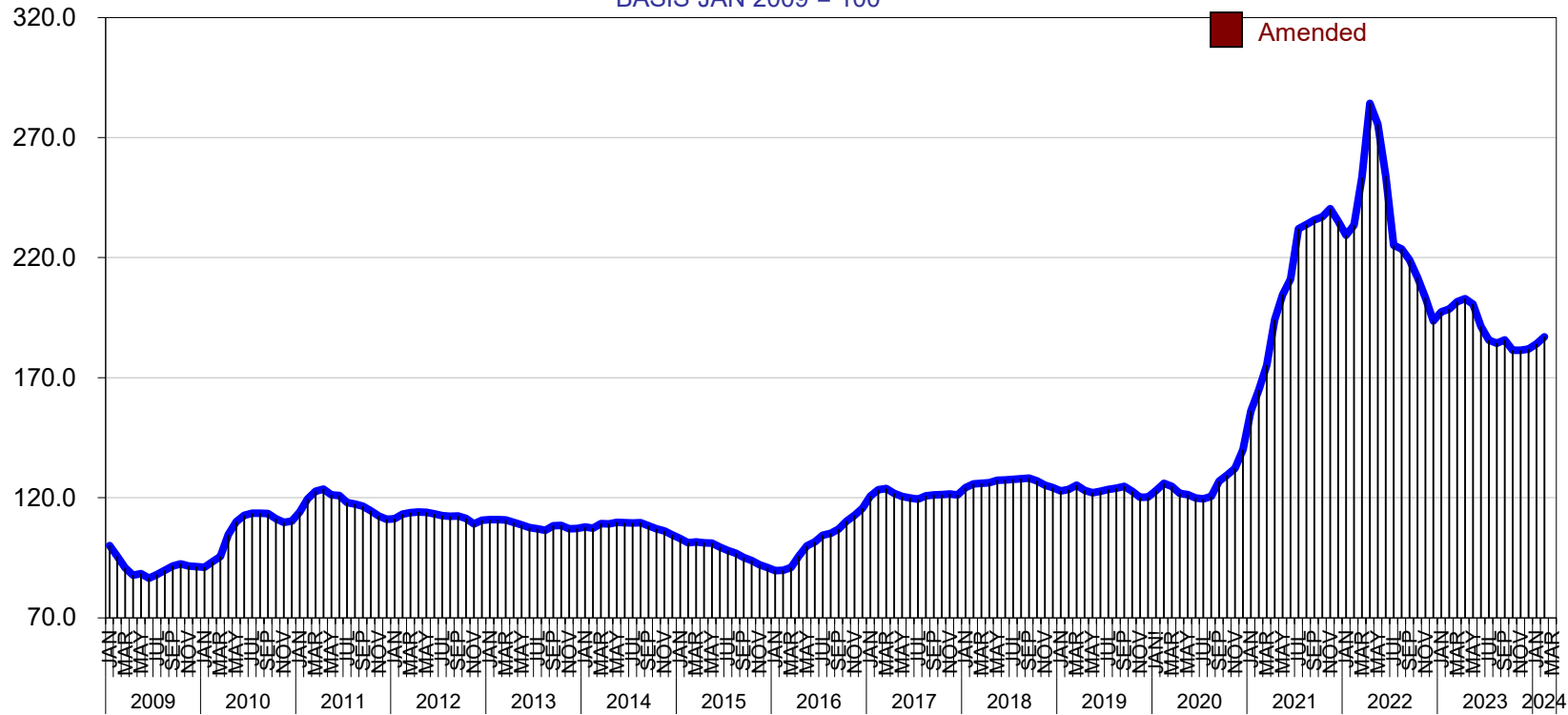
T&D EUROPE
PAPER
BASIS JAN 2009 = 100

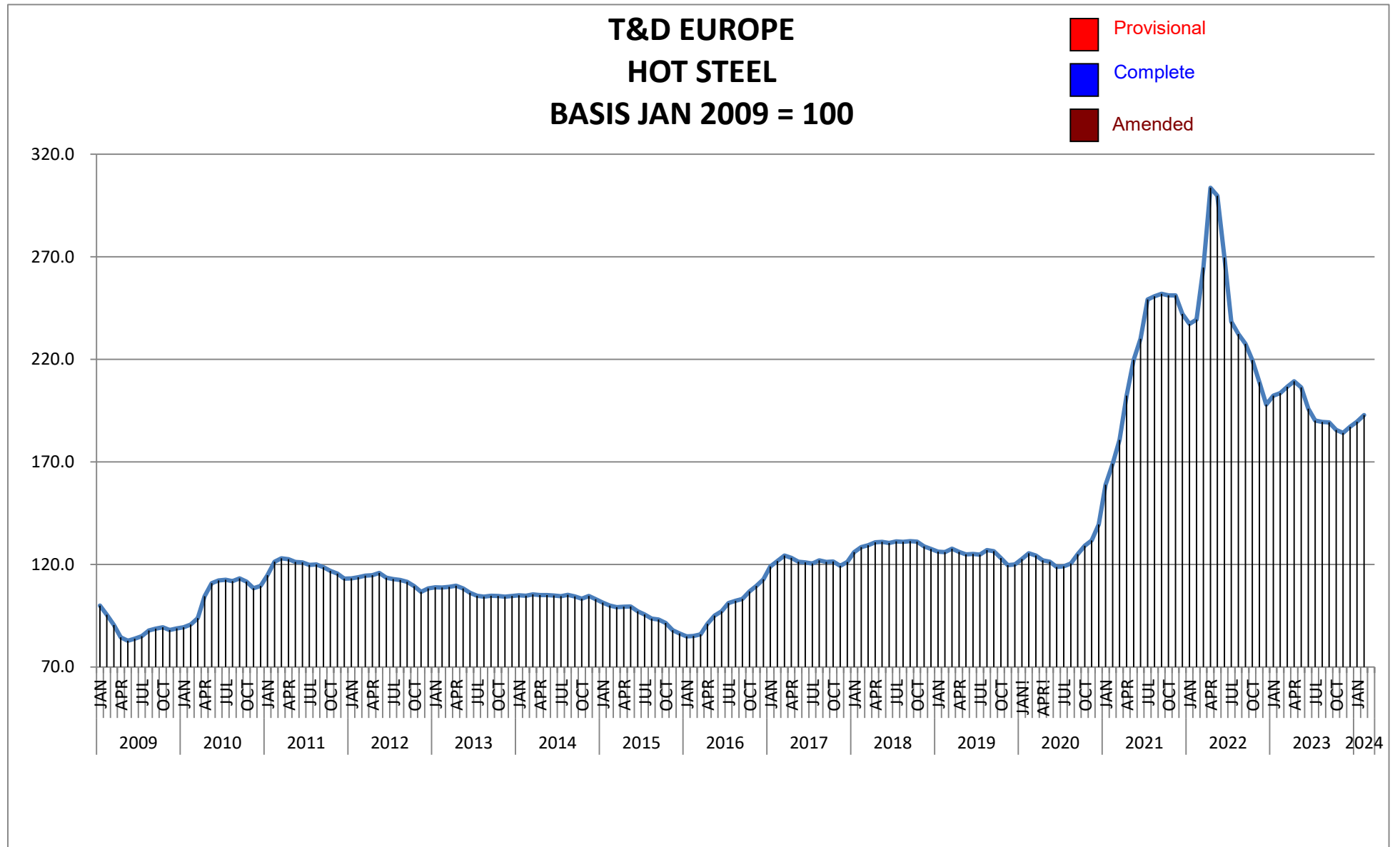
- Provisional
- Complete
- Amended



T&D EUROPE
COLD STEEL
BASIS JAN 2009 = 100

- Provisional
- Complete
- Amended





January 2009 - March 2024

PUBLICATION DATE: 30 April 2024