



# TRANSFORMER COMMODITIES INDICES

MONTHLY

STATISTICS

FOR THE PERIOD

**January 2009 - February 2025**

**PUBLICATION DATE: 31st March 2025**

The indices are published monthly, usually in the last week of the month following the month of reference in compliance with EU market statistical rules (e.g. data for September 2021, is published in the last week October 2021). The indices for paper, cold steel and hot steel are lagging one month behind as these are based on data from national statistical offices, which become available after the deadline for the T&D Europe indices.

**IMPORTANT**

Each operator on the market remains free, autonomous and independent to set its respective prices. The indices do not affect the freedom of markets players to set and change their prices and T&D Europe will not give any instructions on how to use the indices.

In April 2020, the December 2019 - March 2020 indices for GOES High Grade have been updated due to a change in the number of reporting organisations. **Following a quality check in October 2024 the Mineral Oil index for the period January 2023 to August 2024 has been updated, following the discovery of a data entry error.** The issue has been resolved and a robust process has been put in place to avoid its reoccurrence.

We have stopped publishing the **Aluminium and Copper indices** after December 2012, as information is readily available from other sources.

T&F EUROPE

TRANSFORMER COMMODITY INDICES

BASE APR-2017 = 100 [Goes Conv., Goes High Grade, Goes Super High Grade, Mineral Oil] The number of reporting organisations has changed and a linking factor has been applied to the series.
BASE JAN-2009 = 100 [Paper, Cold Steel, Hot Steel]

If due to an insufficient number of respondents, we are not able to provide the High Grade indices.

Table with columns for Year (2009-2017) and Commodity Type (GOES CONV., GOES HIGH GRADE, GOES SUPER HIGH GRADE, MIN. OIL, PAPER, COLD STEEL, HOT STEEL). Each cell contains numerical index values for each month from JAN to DEC.

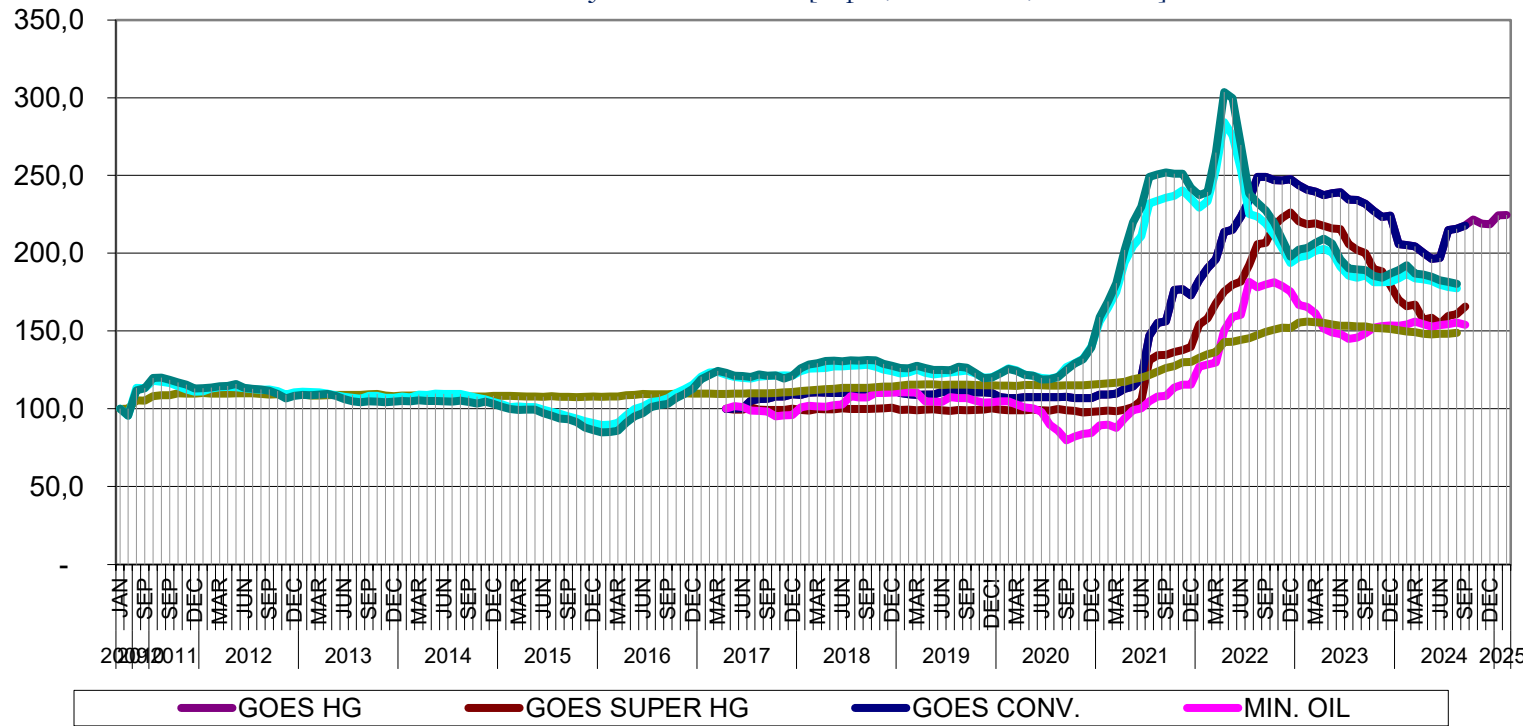
T&F EUROPE								
TRANSFORMER COMMODITY INDICES								
BASE APR-2017 = 100 [Goes Conv., Goes High Grade, Goes Super High Grade, Mineral Oil] <sup>1</sup> The number of reporting organisations has changed and a linking factor has been applied to the series.								
BASE JAN-2009 = 100 [Paper, Cold Steel, Hot Steel]								
! due to an insufficient number of respondents, we are not able to provide the High Grade indices.								
		GOES CONV.	GOES HIGH GRADE	GOES SUPER HIGH GRADE	MIN. OIL	PAPER	COLD STEEL	HOT STEEL
2018	NOV	112,119240487112	99,2450414566737	100,21221891197	110,25719167013	114,27970083325	125,24203043634	128,789994102788
	DEC	112,227680362623	98,2289465127622	100,635636452679	110,368010343076	114,334665194258	124,155838836182	127,59066561045
2019	JAN	110,14346595301	98,2685742155747	99,2051993633433	110,659832848502	114,946968175886	122,791107886447	126,202656386153
	FEB	109,353174675489	98,2682355172601	99,4250042621776	110,470499480683	115,581586688084	123,407	125,984
	MAR	108,990750078619	98,4057470330028	99,146022935967	110,333841252251	115,525193253689	125,242	127,719
	APR	109,069	98,439	99,396	104,816	115,733	123,038	126,157
	MAY	109,101	98,277	99,58	104,613	115,634	122,054	124,932
	JUN	110,869	98,612	99,07	104,345	115,381	122,847	125,062
	JUL	110,695	98,541	98,539	107,54	115,48	123,374	124,758
	AUG	111,183	98,541	99,284	106,875	115,436	123,933	127,046
	SEP	111,173	98,378	99,141	106,875	115,535	124,649	126,472
	OCT	110,63	96,123	99,192	105,139	115,326	122,725	123,153
	NOV	110,641	96,123	99,559	103,939	115,183	120,119	119,64
	DEC	110,186	96,1139275650595	100,365	104,16	115,073	120,219	119,944
2020	JAN	107,583	95,8445056938558	99,427	104,881	114,876	122,949	122,709
	FEB	106,867	96,344320596306	99,121	104,871	114,876	125,992	125,496
	MAR	106,835	96,4442835767961	99,029	102,664	114,711	124,727	124,303
	APR	107,421	97,126	99,033	100,799	115,304	121,819	121,982
	MAY	107,421	97,126	99,518	100,217	115,249	121,304	121,299
	JUN	107,431	97,126	99,039	98,019	114,996	119,805	118,74
	JUL	107,507	97,126	98,614	89,762	114,907	119,315	119,007
	AUG	107,507	97,126	99,855	85,894	114,832	120,498	120,399
	SEP	107,659	97,126	99,059	79,845	115,04	126,819	125,029
	OCT	106,857	96,406	98,549	82,089	115,194	129,359	129,172
	NOV	106,857	96,406	97,631	83,733	115,084	132,256	131,698
	DEC	106,857	96,406	97,978	84,342	115,557	139,907	139,473
2021	JAN	109,112	97,958	98,345	89,329	115,997	156,139	158,851
	FEB	109,21	97,958	98,814	89,819	116,415	164,808	169,088
	MAR	109,828	97,958	98,386	87,685	116,843	175,155	180,702
	APR	112,843	102,21	99,478	93,983	117,261	194,071	202,227
	MAY	114,176	104,566	101,028	99,1	119,064	204,531	219,761
	JUN	119,772	114,128	105,252	100,18	120,119	211,008	229,998
	JUL	147,077	138,935	131,229	104,761	121,702	231,937	249,137
	AUG	155,318	155,801	134,473	107,808	123,879	233,783	250,666
	SEP	156,294	157,508	134,718	108,279	126,198	235,651	251,891
	OCT	176,323	157,938	136,412	113,654	127,363	236,923	251,16
	NOV	176,79	159,05	137,769	115,418	130,013	240,331	251,16
	DEC	172,886	159,63	139,739	115,468	130,068	235,114	242,164
2022	JAN	182,828	168,341	154,287	127,012	132,882	229,342	237,296
	FEB	190,394	171,295	158,117	128,531	135,08	233,447	239,388
	MAR	196,117	182,895	167,738	129,686	136,597	253,46	264,741
	APR	213,674		n/a !!	150,547	142,907	284,278	303,618
	MAY	215,041		n/a !!	179,641	159,219	275,575	299,756
	JUN	223,517		n/a !!	181,771	160,401	253,907	269,675
	JUL	234,014		n/a !!	192,403	181,641	225,125	238,358
	AUG	249,154		n/a !!	205,844	178,159	223,615	232,34
	SEP	249,085		n/a !!	206,656	180,006	219,051	227,525
	OCT	246,976		n/a !!	217,861	181,392	210,998	219,674
	NOV	246,788		n/a !!	222,695	178,972	203,255	208,896
	DEC	247,629		n/a !!	226,277	175,343	152,009	193,613
2023	JAN	243,619		n/a !!	220,364	166,838	155,45	197,338
	FEB	240,797		n/a !!	216,654	165,452	156,11	188,479
	MAR	239,599		n/a !!	219,132	161,463	155,881	201,566
	APR	237,43		n/a !!	217,613	151,6	155,252	202,808
	MAY	238,608		n/a !!	215,874	149,014	154,197	200,593
	JUN	239,252		n/a !!	215,492	147,943	153,351	191,241
	JUL	234,38		n/a !!	205,853	144,886	153,362	185,525
	AUG	234,35		n/a !!	202,204	145,8	152,889	184,261
	SEP	231,776		n/a !!	200,007	148,358	153,043	185,659
	OCT	227,28		n/a !!	189,833	152,182	152,031	181,364
	NOV	223,349		n/a !!	188,381	153,179	151,713	181,42
	DEC	224,21		n/a !!	179,364	153,622	151,383	181,655
2024	JAN	205,94		n/a !!	170,04	153,308	150,459	183,802
	FEB	205,267		n/a !!	165,865	154,112	149,668	186,711
	MAR	204,485		n/a !!	166,974	156,06	149,36	183,847
	APR	200,286		n/a !!	157,335	154,472	148,162	183,142
	MAY	196,474		n/a !!	158,577	152,727	147,766	182,214
	JUN	196,949		n/a !!	154,545	153,835	148,129	179,663
	JUL	214,902		n/a !!	159,799	154,49	148,184	178,288
	AUG	215,773		n/a !!	160,86	155,377	148,778	177,37
	SEP	217,823		n/a !!	165,732	154,01	148,832	172,638
	OCT	221,628		n/a !!	166,868	150,169	149,327	170,502
	NOV	219,021		n/a !!	166,162	151,822	149,767	171,207
	DEC	218,576		n/a !!	169,887	152,773	149,723	171,766
2025	JAN	224,438		n/a !!	173,269	148,174	149,547	170,513
	FEB	224,577		n/a !!	174,358	148,931		171,994
	MAR			n/a !!				
	APR			n/a !!				
	MAY			n/a !!				
	JUN			n/a !!				
	JUL			n/a !!				
	AUG			n/a !!				
	SEP			n/a !!				
	OCT			n/a !!				
	NOV			n/a !!				
	DEC			n/a !!				

### T&D EUROPE

### TRANSFORMER COMMODITIES INDICES

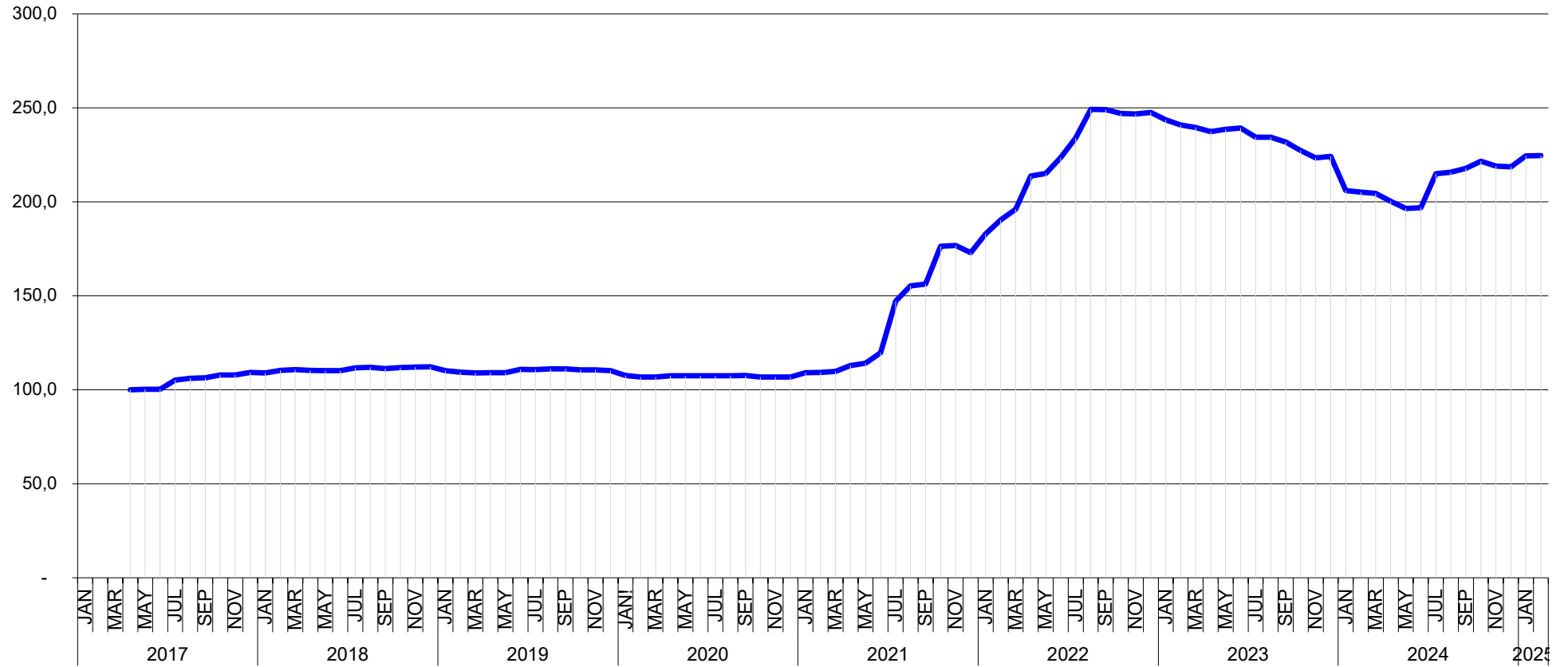
BASE APR-2017 = 100 [Goes Conv., Goes High Grade, Goes Super High Grade, Mineral Oil]

BASE JAN-2009 = 100 [Paper, Cold Steel, Hot Steel]



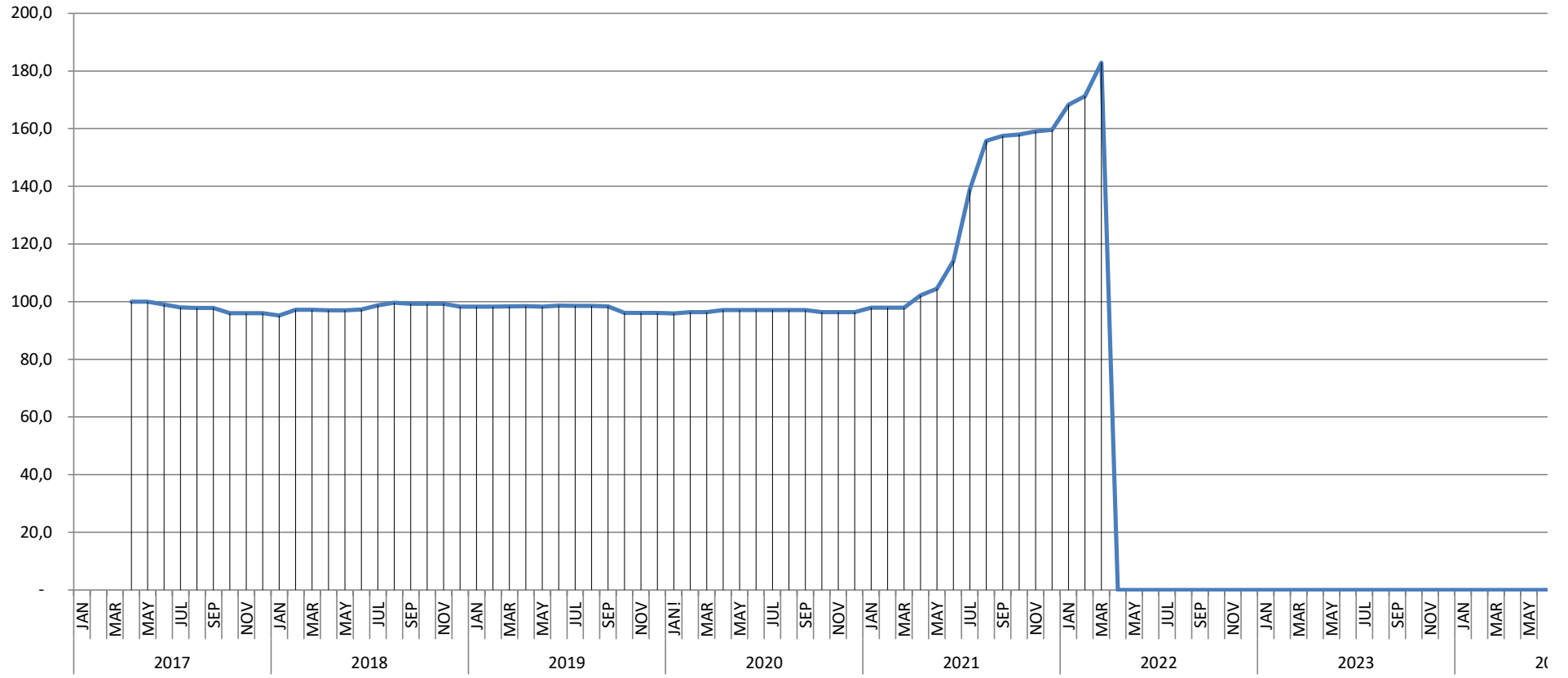
T&D EUROPE  
**GOES CONV.**  
BASIS APR 2017 = 100

- Provisional
- Complete
- Amended



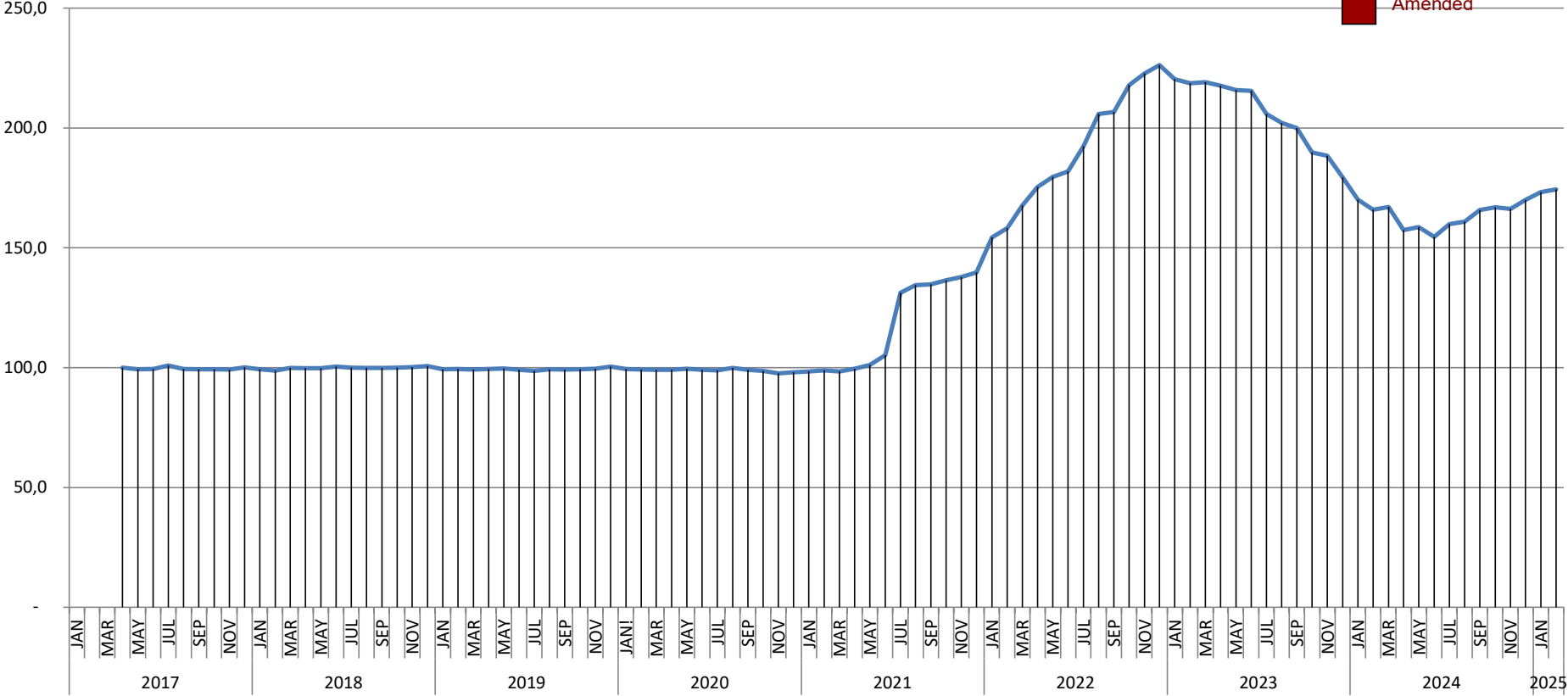
# T&D EUROPE GOES HIGH GRADE BASIS APR 2017 = 100

- Provisions
- Complete
- Amended



**T&D EUROPE  
GOES SUPER HIGH GRADE  
BASIS APR 2017 = 100**

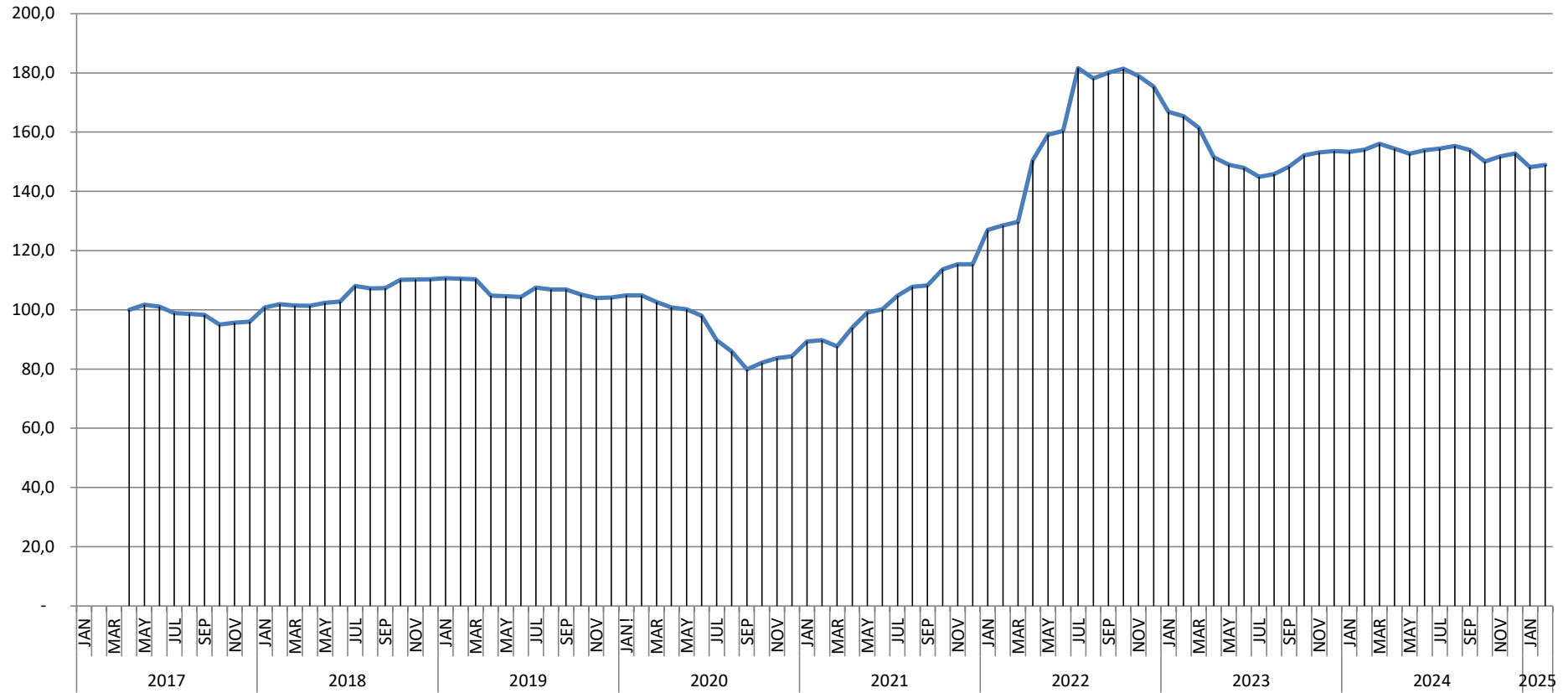
- Provisional
- Complete
- Amended





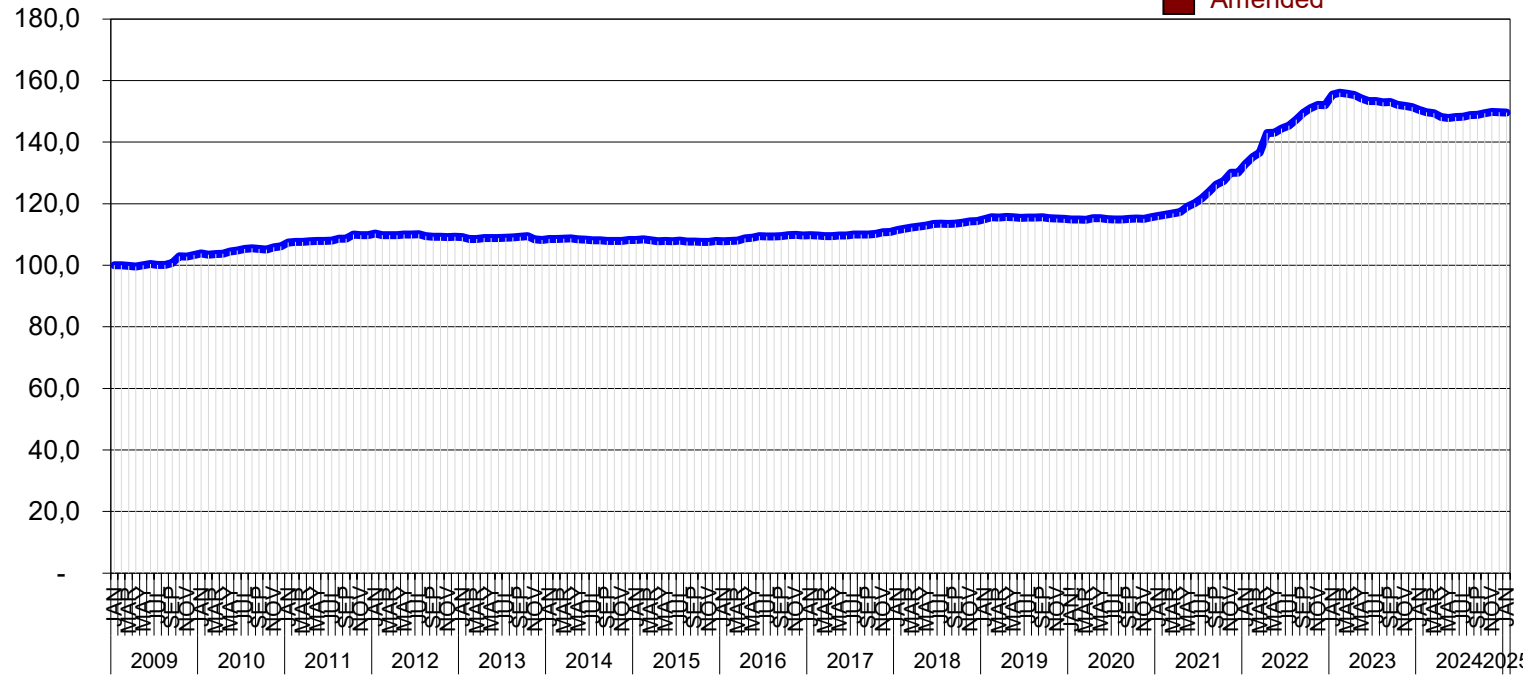
**T&D EUROPE  
MINERAL OIL  
BASIS APR 2017 = 100**

- Provisional
- Complete
- Amended

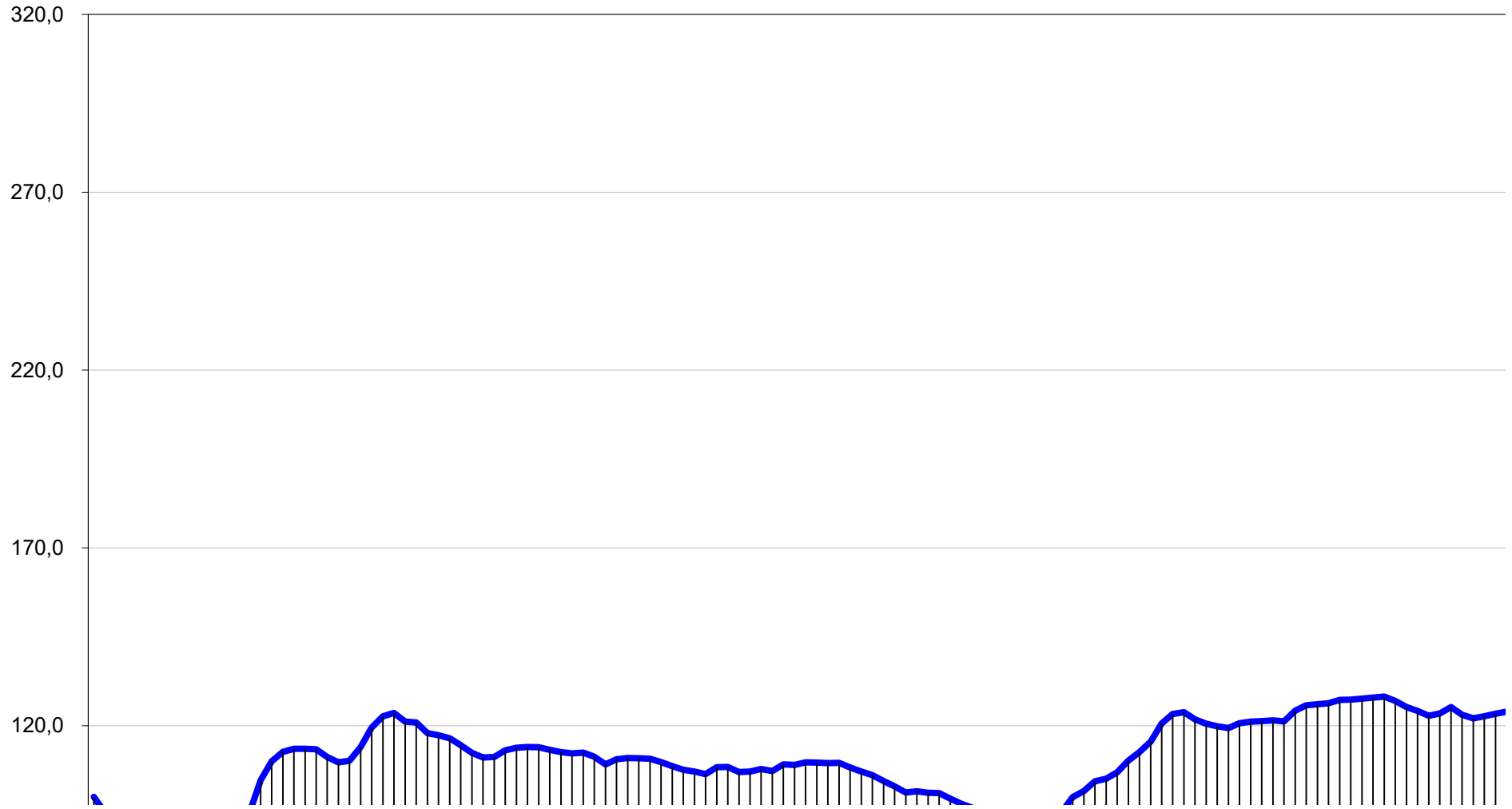


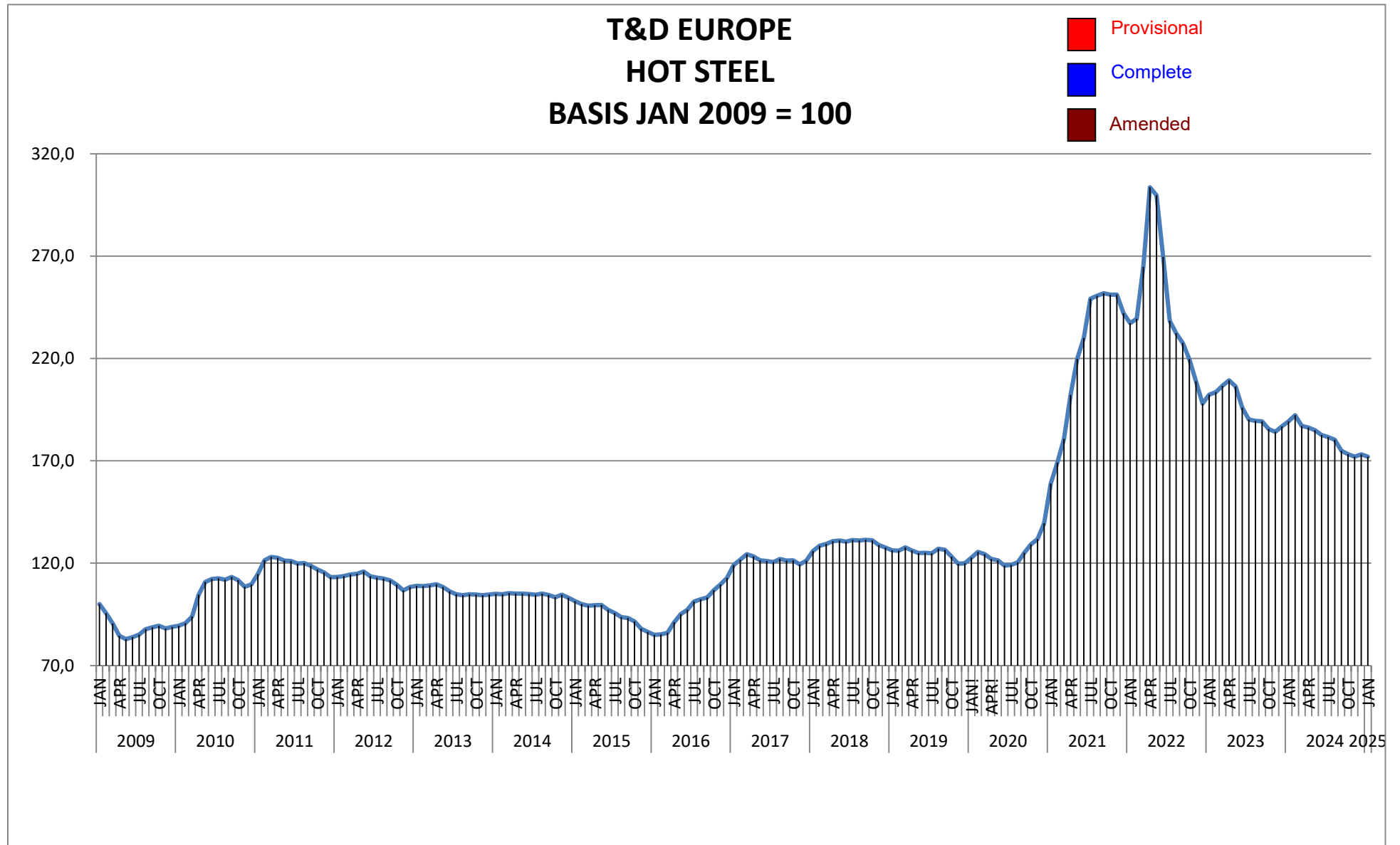
**T&D EUROPE**  
**PAPER**  
BASIS JAN 2009 = 100

- Provisional
- Complete
- Amended



T&D EUROPE  
**COLD STEEL**  
BASIS JAN 2009 = 100





January 2009 - February 2025

PUBLICATION DATE: 31st March 2025