



TRANSFORMER COMMODITIES INDICES

MONTHLY

STATISTICS

FOR THE PERIOD

January 2009 - February 2023

PUBLICATION DATE: 4 APRIL 2023

The indices are published monthly, usually in the last week of the month following the month of reference in compliance with EU market statistical rules (e.g. data for September 2021, is published in the last week October 2021). The indices for paper, cold steel and hot steel are lagging one month behind as these are based on data from national statistical offices, which become available after the deadline for the T&D Europe indices.

IMPORTANT

In April 2020, the December 2019 - March 2020 indices for GOES High Grade have been updated due to a change in the number of reporting organisations.

We have stopped publishing the **Aluminium and Copper indices** after December 2012, as information

is readily available from other sources.

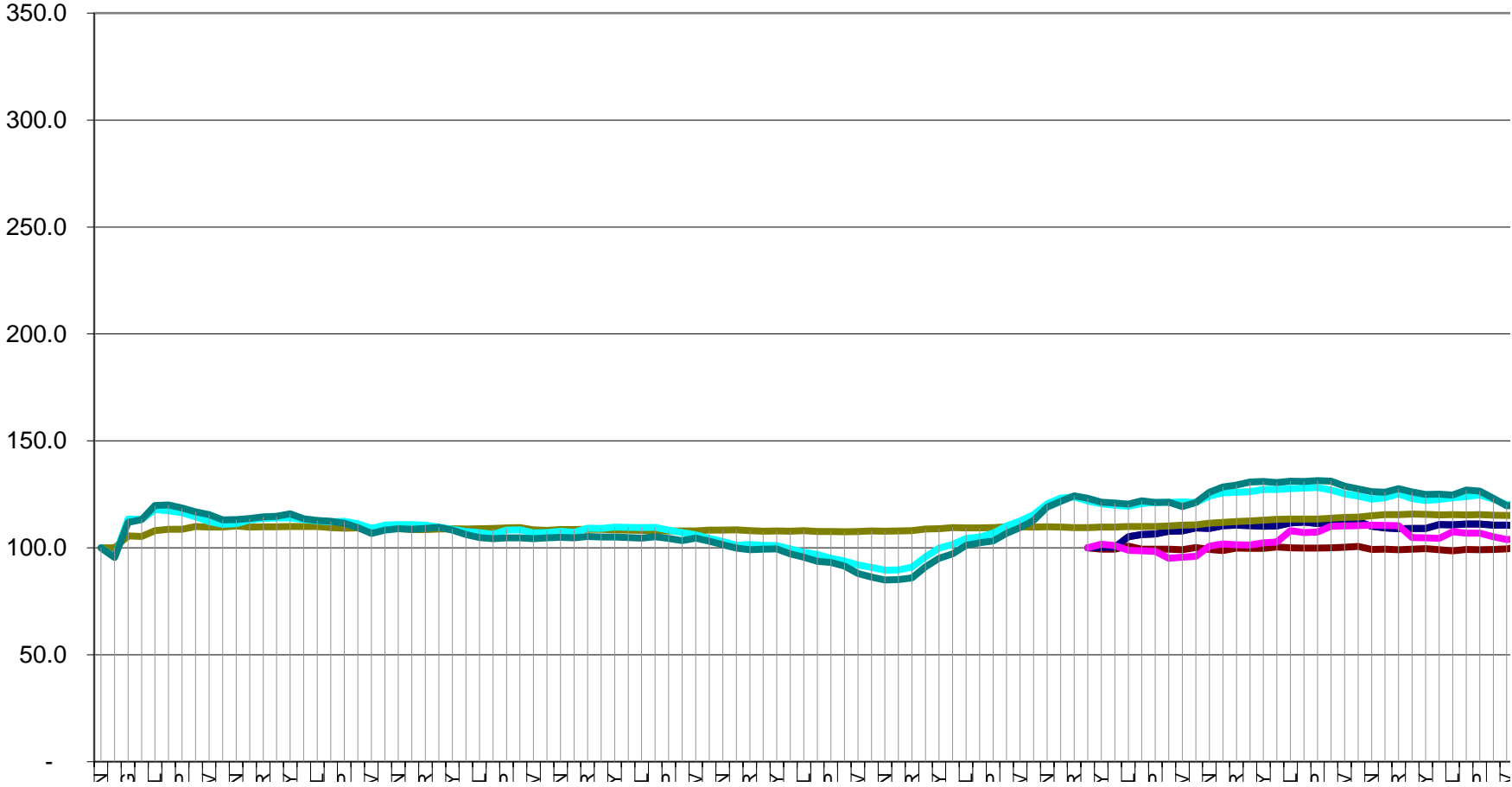
| T&D EUROPE | | | | | | | |
|--|------------|-----------------|-----------------------|----------|-------|------------|-----------|
| TRANSFORMER COMMODITY INDICES | | | | | | | |
| BASE APR-2017 = 100 [Goes Conv., Goes High Grade, Goes Super High Grade, Mineral Oil] | | | | | | | |
| ! The number of reporting organisations has changed and a linking factor has been applied to the series. | | | | | | | |
| | GOES CONV. | GOES HIGH GRADE | GOES SUPER HIGH GRADE | MIN. OIL | PAPER | COLD STEEL | HOT STEEL |
| 2009 | JAN | | | | 100.0 | 100.0 | 100.0 |
| | FEB | | | | 100.0 | 95.6 | 95.5 |
| | MAR | | | | 99.8 | 90.7 | 90.5 |
| | APR | | | | 99.6 | 87.7 | 84.5 |
| | MAY | | | | 100.0 | 88.3 | 82.8 |
| | JUN | | | | 100.4 | 86.6 | 83.8 |
| | JUL | | | | 100.1 | 88.0 | 85.0 |
| | AUG | | | | 100.1 | 89.7 | 87.8 |
| | SEP | | | | 100.7 | 91.5 | 88.6 |
| | OCT | | | | 102.9 | 92.5 | 89.4 |
| | NOV | | | | 102.8 | 91.5 | 88.1 |
| | DEC | | | | 103.3 | 91.3 | 88.8 |
| 2010 | JAN | | | | 103.9 | 91.0 | 89.4 |
| | FEB | | | | 103.5 | 93.3 | 90.7 |
| | MAR | | | | 103.7 | 95.4 | 93.8 |
| | APR | | | | 103.7 | 104.7 | 104.5 |
| | MAY | | | | 104.4 | 110.0 | 110.8 |
| | JUN | | | | 104.8 | 112.7 | 112.2 |
| | JUL | | | | 105.3 | 113.5 | 112.6 |
| | AUG | | | | 105.5 | 113.5 | 111.8 |
| | SEP | | | | 105.3 | 113.3 | 113.2 |
| | OCT | | | | 105.1 | 111.2 | 111.6 |
| | NOV | | | | 105.8 | 109.7 | 108.4 |
| | DEC | | | | 106.2 | 110.1 | 109.5 |
| 2011 | JAN | | | | 107.3 | 114.0 | 114.7 |
| | FEB | | | | 107.6 | 119.5 | 121.4 |
| | MAR | | | | 107.6 | 122.6 | 123.0 |
| | APR | | | | 107.8 | 123.6 | 122.5 |
| | MAY | | | | 107.9 | 121.1 | 121.2 |
| | JUN | | | | 107.9 | 120.9 | 121.0 |
| | JUL | | | | 108.0 | 117.9 | 119.8 |
| | AUG | | | | 108.6 | 117.3 | 120.0 |
| | SEP | | | | 108.6 | 116.5 | 118.6 |
| | OCT | | | | 110.0 | 114.5 | 116.9 |
| | NOV | | | | 109.8 | 112.3 | 115.5 |
| | DEC | | | | 109.7 | 111.0 | 113.1 |
| 2012 | JAN | | | | 110.3 | 111.2 | 113.2 |
| | FEB | | | | 109.7 | 113.1 | 113.7 |
| | MAR | | | | 109.8 | 113.8 | 114.5 |
| | APR | | | | 109.8 | 114.0 | 114.8 |
| | MAY | | | | 109.9 | 113.9 | 115.9 |
| | JUN | | | | 109.9 | 113.3 | 113.5 |
| | JUL | | | | 110.0 | 112.5 | 112.9 |
| | AUG | | | | 109.5 | 112.2 | 112.5 |
| | SEP | | | | 109.2 | 112.4 | 111.5 |
| | OCT | | | | 109.3 | 111.3 | 109.5 |
| | NOV | | | | 109.2 | 109.1 | 106.7 |
| | DEC | | | | 109.2 | 110.6 | 108.3 |
| 2013 | JAN | | | | 109.1 | 110.9 | 108.9 |
| | FEB | | | | 108.5 | 110.9 | 108.7 |
| | MAR | | | | 108.5 | 110.7 | 109.1 |
| | APR | | | | 108.8 | 109.7 | 109.6 |
| | MAY | | | | 108.9 | 108.6 | 108.3 |
| | JUN | | | | 108.8 | 107.6 | 106.2 |
| | JUL | | | | 108.9 | 107.1 | 104.8 |
| | AUG | | | | 109.0 | 106.4 | 104.3 |
| | SEP | | | | 109.3 | 108.3 | 104.7 |
| | OCT | | | | 109.5 | 108.4 | 104.7 |
| | NOV | | | | 108.4 | 107.0 | 104.3 |
| | DEC | | | | 108.2 | 107.1 | 104.6 |
| 2014 | JAN | | | | 108.5 | 107.8 | 105.0 |
| | FEB | | | | 108.6 | 107.3 | 104.7 |
| | MAR | | | | 108.7 | 109.1 | 105.4 |
| | APR | | | | 108.7 | 109.0 | 105.0 |
| | MAY | | | | 108.4 | 109.7 | 105.0 |
| | JUN | | | | 108.3 | 109.6 | 104.8 |
| | JUL | | | | 108.1 | 109.5 | 104.6 |
| | AUG | | | | 108.1 | 109.5 | 105.1 |
| | SEP | | | | 107.9 | 108.2 | 104.4 |
| | OCT | | | | 107.9 | 107.1 | 103.3 |
| | NOV | | | | 107.9 | 106.1 | 104.6 |
| | DEC | | | | 108.2 | 104.5 | 103.1 |
| 2015 | JAN | | | | 108.3 | 103.0 | 101.4 |
| | FEB | | | | 108.4 | 101.2 | 99.9 |
| | MAR | | | | 108.1 | 101.5 | 99.2 |
| | APR | | | | 107.8 | 101.1 | 99.4 |
| | MAY | | | | 107.9 | 101.0 | 99.5 |
| | JUN | | | | 107.7 | 99.4 | 97.2 |
| | JUL | | | | 108.0 | 98.0 | 95.6 |
| | AUG | | | | 107.7 | 96.9 | 93.6 |
| | SEP | | | | 107.7 | 95.1 | 93.2 |
| | OCT | | | | 107.6 | 93.8 | 91.5 |
| | NOV | | | | 107.6 | 92.0 | 88.0 |
| | DEC | | | | 107.9 | 90.9 | 86.3 |
| 2016 | JAN | | | | 107.8 | 89.6 | 85.0 |
| | FEB | | | | 107.9 | 89.7 | 85.1 |
| | MAR | | | | 108.0 | 90.9 | 85.9 |
| | APR | | | | 108.8 | 95.8 | 91.1 |
| | MAY | | | | 109.0 | 99.9 | 95.1 |
| | JUN | | | | 109.5 | 101.6 | 97.2 |
| | JUL | | | | 109.4 | 104.4 | 101.2 |
| | AUG | | | | 109.3 | 105.1 | 102.3 |
| | SEP | | | | 109.4 | 106.9 | 103.2 |
| | OCT | | | | 109.8 | 110.2 | 106.8 |
| | NOV | | | | 109.9 | 112.6 | 109.5 |
| | DEC | | | | 109.7 | 115.5 | 112.8 |
| JAN | | | | 109.8 | 120.6 | 119.0 | |

! due to an insufficient number of respondents, we are not able to provide the High Grade indices

| T&D EUROPE | | | | | | | |
|--|------------|-----------------|-----------------------|----------|---------|------------|-----------|
| TRANSFORMER COMMODITY INDICES | | | | | | | |
| BASE: APR-2017 = 100 [Goes Conv., Goes High Grade, Goes Super High Grade, Mineral Oil] | | | | | | | |
| The number of reporting organisations has changed and a linking factor has been applied to the series. | | | | | | | |
| | GOES CONV. | GOES HIGH GRADE | GOES SUPER HIGH GRADE | MIN. OIL | PAPER | COLD STEEL | HOT STEEL |
| 2017 | FEB | | | | 109.7 | 123.3 | 121.7 |
| | MAR | | | | 109.5 | 123.8 | 124.3 |
| | APR | 100.000 | 100.000 | 100.000 | 100.000 | 109.500 | 121.800 |
| | MAY | 100.163 | 100.000 | 99.378 | 101.734 | 109.665 | 120.519 |
| | JUN | 100.235 | 98.979 | 99.412 | 101.080 | 109.673 | 119.865 |
| | JUL | 105.145 | 98.013 | 100.828 | 98.896 | 110.000 | 119.348 |
| | AUG | 106.172 | 97.843 | 99.390 | 98.620 | 110.000 | 120.707 |
| | SEP | 106.435 | 97.843 | 99.317 | 98.286 | 109.999 | 121.160 |
| | OCT | 107.814 | 96.028 | 99.326 | 95.043 | 110.222 | 121.249 |
| | NOV | 107.878 | 96.028 | 99.160 | 95.673 | 110.649 | 121.472 |
| | DEC | 109.272 | 96.028 | 100.098 | 96.045 | 110.759 | 121.194 |
| | 2018 | JAN | 109.007 | 95.216 | 99.302 | 100.808 | 111.458 |
| FEB | | 110.347 | 97.141 | 98.774 | 101.875 | 111.890 | 125.712 |
| MAR | | 110.663 | 97.139 | 99.916 | 101.427 | 112.269 | 125.992 |
| APR | | 110.378 | 97.047 | 99.745 | 101.371 | 112.588 | 126.281 |
| MAY | | 110.115 | 97.047 | 99.705 | 102.369 | 112.918 | 127.249 |
| JUN | | 110.188 | 97.217 | 100.370 | 102.766 | 113.355 | 127.332 |
| JUL | | 111.646 | 98.734 | 99.968 | 108.084 | 113.517 | 127.625 |
| AUG | | 111.985 | 99.572 | 99.947 | 107.179 | 113.407 | 127.902 |
| SEP | | 111.325 | 99.234 | 99.853 | 107.373 | 113.459 | 128.167 |
| OCT | | 111.700 | 99.245 | 100.027 | 110.128 | 113.788 | 128.984 |
| NOV | | 112.119 | 99.245 | 100.212 | 110.257 | 114.280 | 125.242 |
| DEC | | 112.228 | 98.229 | 100.636 | 110.368 | 114.335 | 124.156 |
| 2019 | JAN | 110.143 | 98.269 | 99.205 | 110.660 | 114.947 | 122.791 |
| | FEB | 109.353 | 98.268 | 99.425 | 110.470 | 115.582 | 123.407 |
| | MAR | 108.991 | 98.406 | 99.146 | 110.334 | 115.525 | 125.242 |
| | APR | 109.069 | 98.439 | 99.396 | 104.816 | 115.733 | 123.038 |
| | MAY | 109.101 | 98.277 | 99.580 | 104.613 | 115.634 | 122.054 |
| | JUN | 110.869 | 98.612 | 99.070 | 104.345 | 115.381 | 122.647 |
| | JUL | 110.695 | 98.541 | 98.539 | 107.540 | 115.480 | 123.374 |
| | AUG | 111.183 | 98.541 | 99.284 | 106.875 | 115.436 | 123.933 |
| | SEP | 111.173 | 98.378 | 99.141 | 106.875 | 115.535 | 124.649 |
| | OCT | 110.630 | 96.123 | 99.192 | 105.139 | 115.326 | 122.725 |
| | NOV | 110.641 | 96.123 | 99.559 | 103.939 | 115.183 | 120.119 |
| | DEC | 110.186 | 96.114 | 100.365 | 104.160 | 115.073 | 120.219 |
| 2020 | JAN | 107.583 | 95.845 | 99.427 | 104.881 | 114.876 | 122.949 |
| | FEB | 106.867 | 96.344 | 99.121 | 104.871 | 114.876 | 125.992 |
| | MAR | 106.835 | 96.444 | 99.029 | 102.664 | 114.711 | 124.727 |
| | APR | 107.421 | 97.126 | 99.033 | 100.799 | 115.304 | 121.819 |
| | MAY | 107.421 | 97.126 | 99.518 | 100.217 | 115.249 | 121.304 |
| | JUN | 107.431 | 97.126 | 99.039 | 98.019 | 114.996 | 119.805 |
| | JUL | 107.507 | 97.126 | 98.814 | 89.782 | 114.887 | 119.087 |
| | AUG | 107.507 | 97.126 | 99.855 | 85.894 | 114.832 | 120.488 |
| | SEP | 107.659 | 97.126 | 99.059 | 79.845 | 115.040 | 126.819 |
| | OCT | 106.857 | 96.406 | 98.549 | 82.089 | 115.194 | 129.359 |
| | NOV | 106.857 | 96.406 | 97.631 | 83.733 | 115.084 | 132.256 |
| | DEC | 106.857 | 96.406 | 97.978 | 84.342 | 115.557 | 139.907 |
| 2021 | JAN | 109.112 | 97.958 | 98.345 | 89.329 | 115.997 | 156.139 |
| | FEB | 109.210 | 97.958 | 98.814 | 89.819 | 116.415 | 164.808 |
| | MAR | 109.828 | 97.958 | 98.386 | 87.685 | 116.843 | 175.155 |
| | APR | 112.843 | 102.210 | 99.478 | 93.983 | 117.261 | 194.071 |
| | MAY | 114.176 | 104.566 | 101.028 | 99.100 | 119.064 | 204.531 |
| | JUN | 119.772 | 114.128 | 105.252 | 100.180 | 120.119 | 211.008 |
| | JUL | 147.077 | 138.935 | 131.229 | 104.761 | 121.702 | 231.937 |
| | AUG | 155.318 | 155.801 | 134.473 | 107.808 | 123.879 | 233.783 |
| | SEP | 156.294 | 157.508 | 134.718 | 108.279 | 126.198 | 235.651 |
| | OCT | 176.323 | 157.938 | 136.412 | 113.654 | 127.363 | 236.923 |
| | NOV | 176.790 | 159.050 | 137.769 | 115.418 | 130.013 | 240.331 |
| | DEC | 172.886 | 159.630 | 139.739 | 115.468 | 130.068 | 235.114 |
| 2022 | JAN | 182.828 | 168.341 | 154.287 | 127.012 | 132.882 | 229.342 |
| | FEB | 190.394 | 171.295 | 158.117 | 128.531 | 135.080 | 233.447 |
| | MAR | 196.117 | 182.895 | 167.738 | 129.686 | 136.597 | 253.460 |
| | APR | 213.674 | n/a !! | 175.313 | 150.547 | 142.907 | 284.278 |
| | MAY | 215.041 | n/a !! | 179.641 | 159.219 | 143.006 | 275.575 |
| | JUN | 223.517 | n/a !! | 181.771 | 160.401 | 144.380 | 253.907 |
| | JUL | 234.014 | n/a !! | 192.403 | 181.641 | 145.282 | 225.125 |
| | AUG | 249.154 | n/a !! | 205.844 | 178.159 | 147.337 | 223.615 |
| | SEP | 249.085 | n/a !! | 206.656 | 180.006 | 149.459 | 219.051 |
| | OCT | 246.976 | n/a !! | 217.861 | 181.392 | 150.998 | 211.735 |
| | NOV | 246.788 | n/a !! | 222.695 | 178.972 | 152.053 | 203.255 |
| | DEC | 247.629 | n/a !! | 226.277 | 175.343 | 152.009 | 193.613 |
| 2023 | JAN | 243.619 | n/a !! | 220.364 | 164.87 | | |
| | FEB | 240.797 | n/a !! | 218.654 | 167.142 | | |
| | MAR | | | | | | |
| | APR | | | | | | |
| | MAY | | | | | | |
| | JUN | | | | | | |
| | JUL | | | | | | |
| | AUG | | | | | | |
| | SEP | | | | | | |
| | OCT | | | | | | |
| | NOV | | | | | | |
| | DEC | | | | | | |

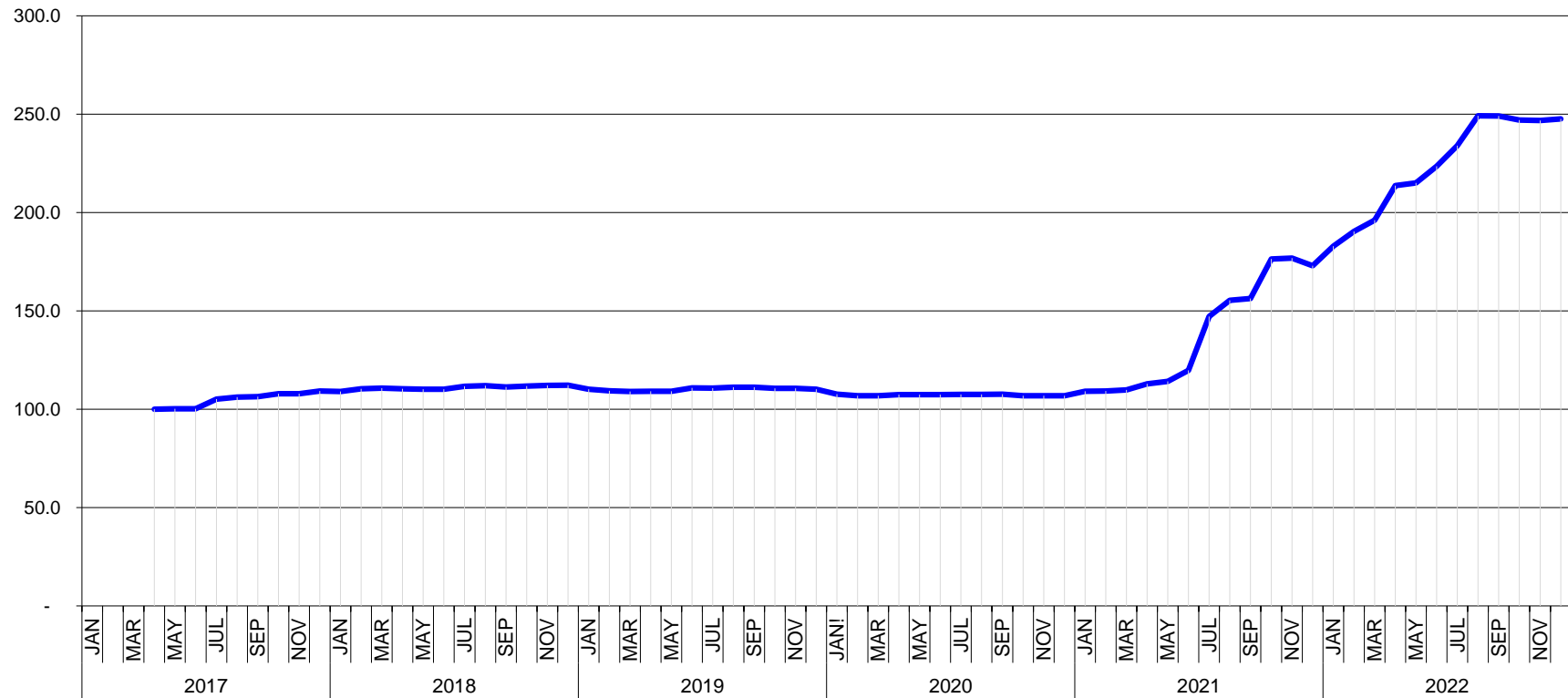
If due to an insufficient number of respondents, we are not able to provide the High Grade indices

T&D EUROPE
TRANSFORMER COMMODITIES INDICES
BASE APR-2017 = 100 [Goes Conv., Goes High Grade, Goes Super High Grade, Mineral Oil]
BASE JAN-2009 = 100 [Paper, Cold Steel, Hot Steel]



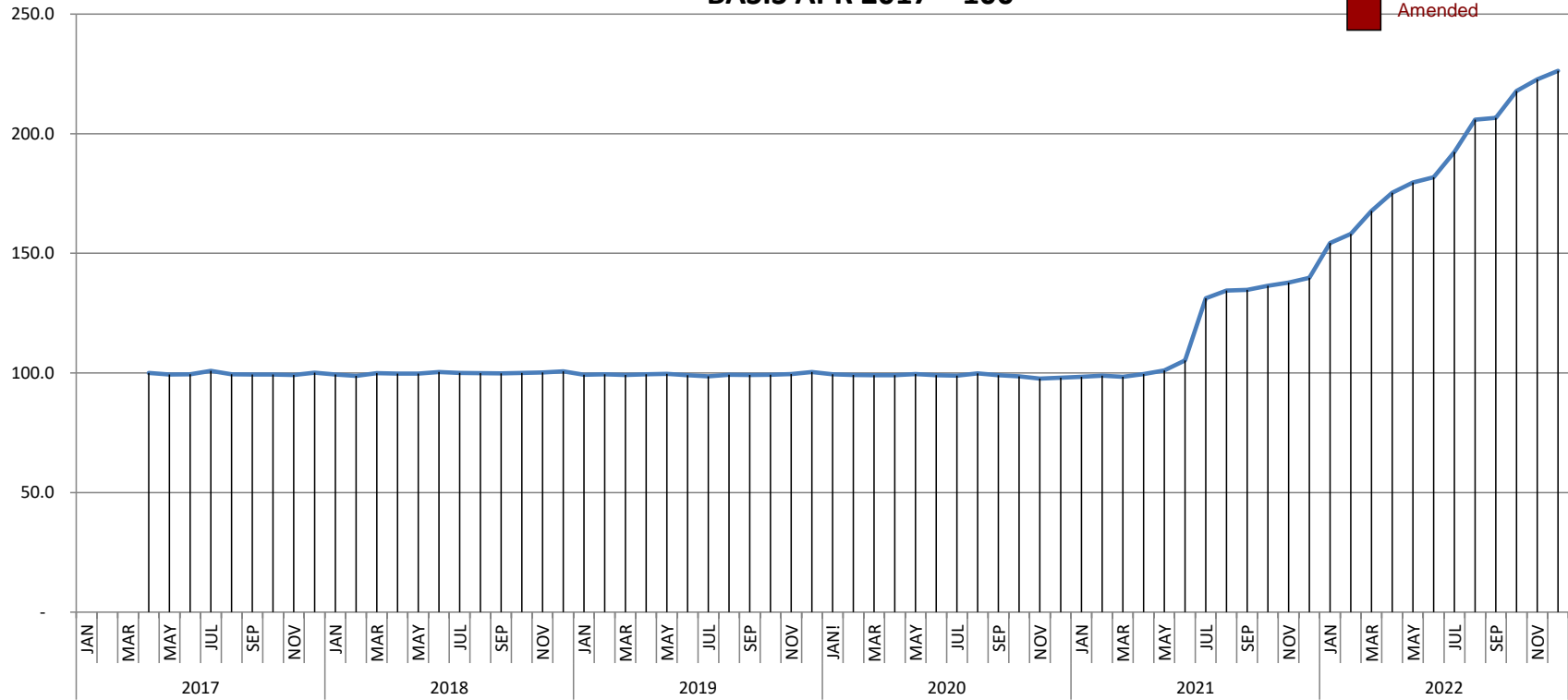
T&D EUROPE
GOES CONV.
BASIS APR 2017 = 100

- Provisional
- Complete
- Amended



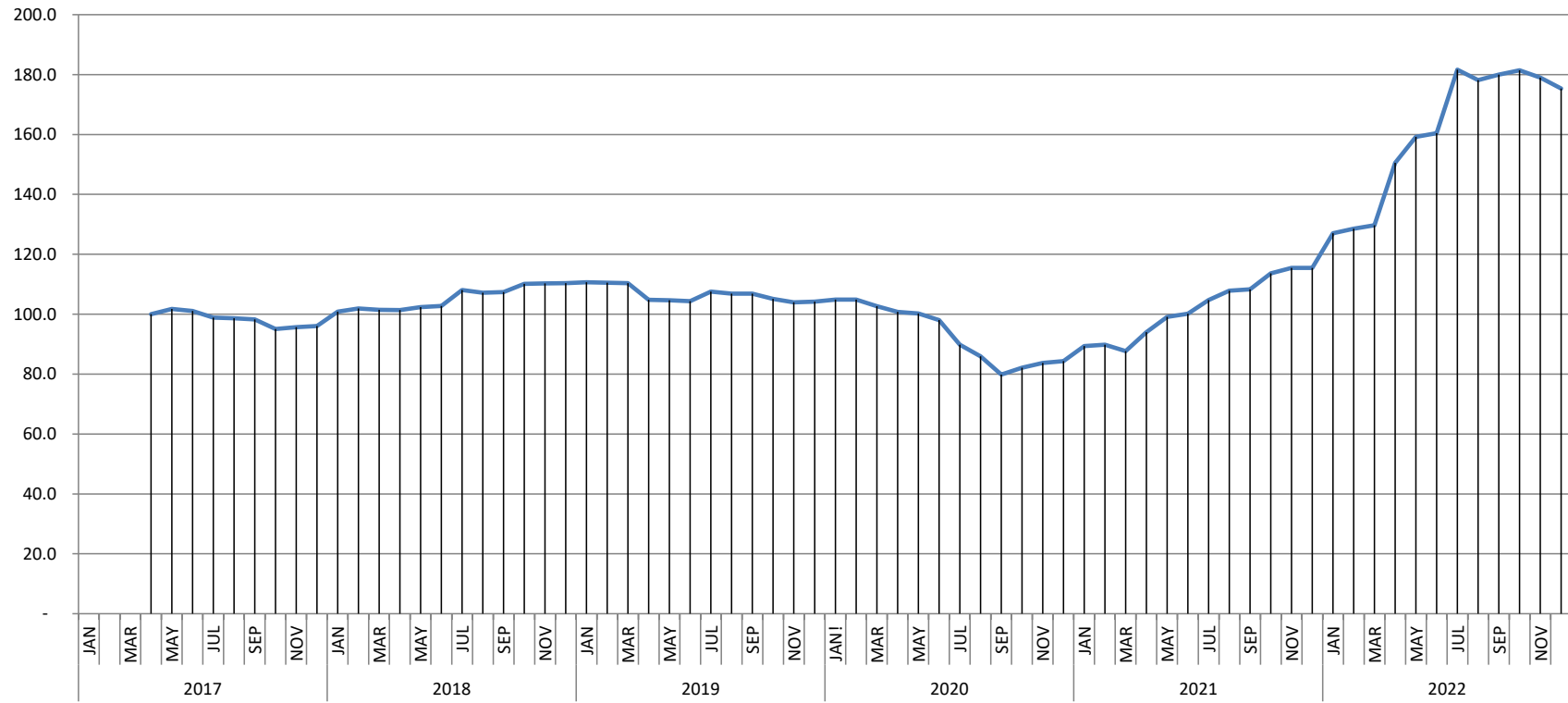
**T&D EUROPE
GOES SUPER HIGH GRADE
BASIS APR 2017 = 100**

- Provisional
- Complete
- Amended

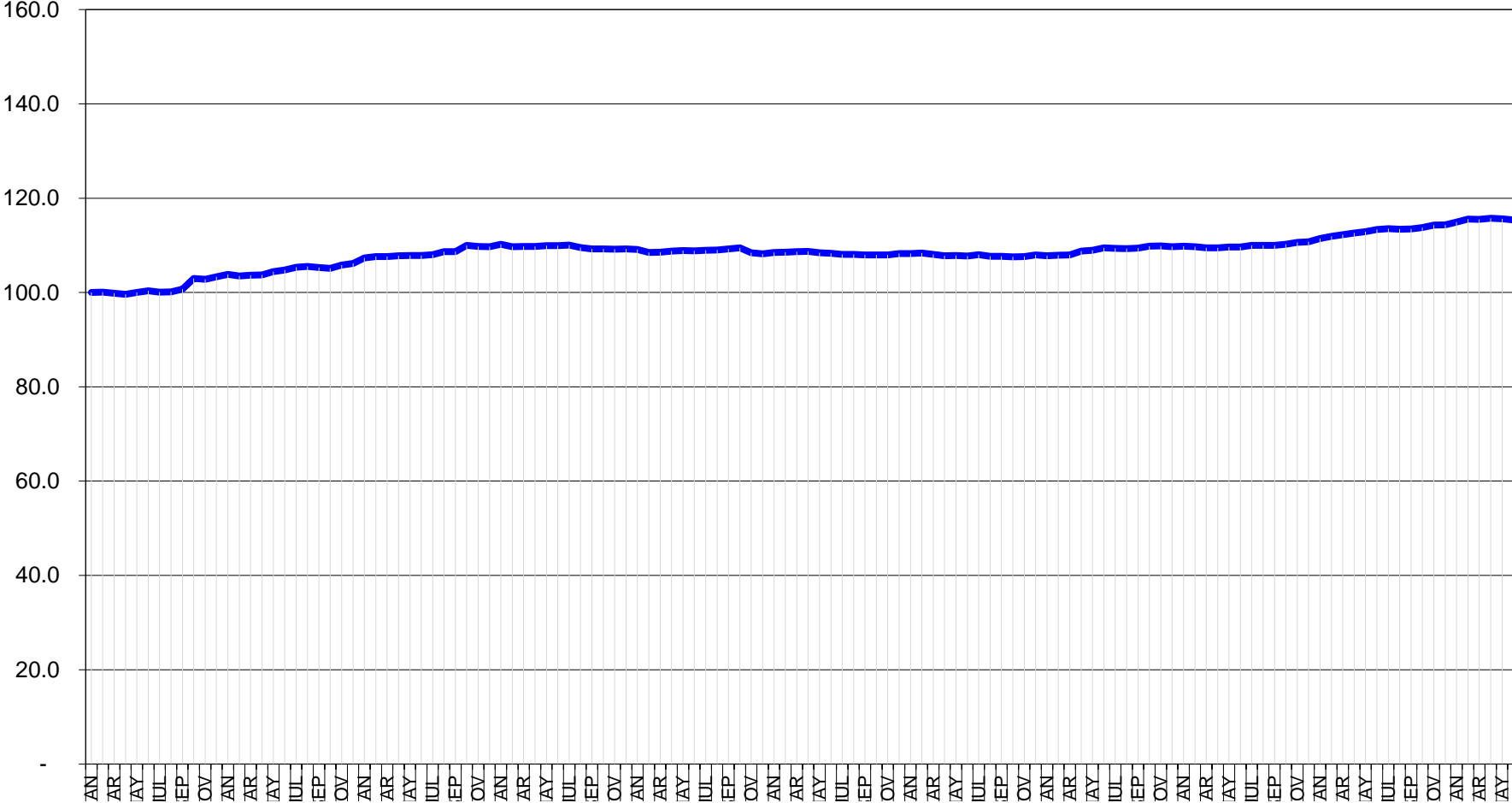


T&D EUROPE MINERAL OIL BASIS APR 2017 = 100

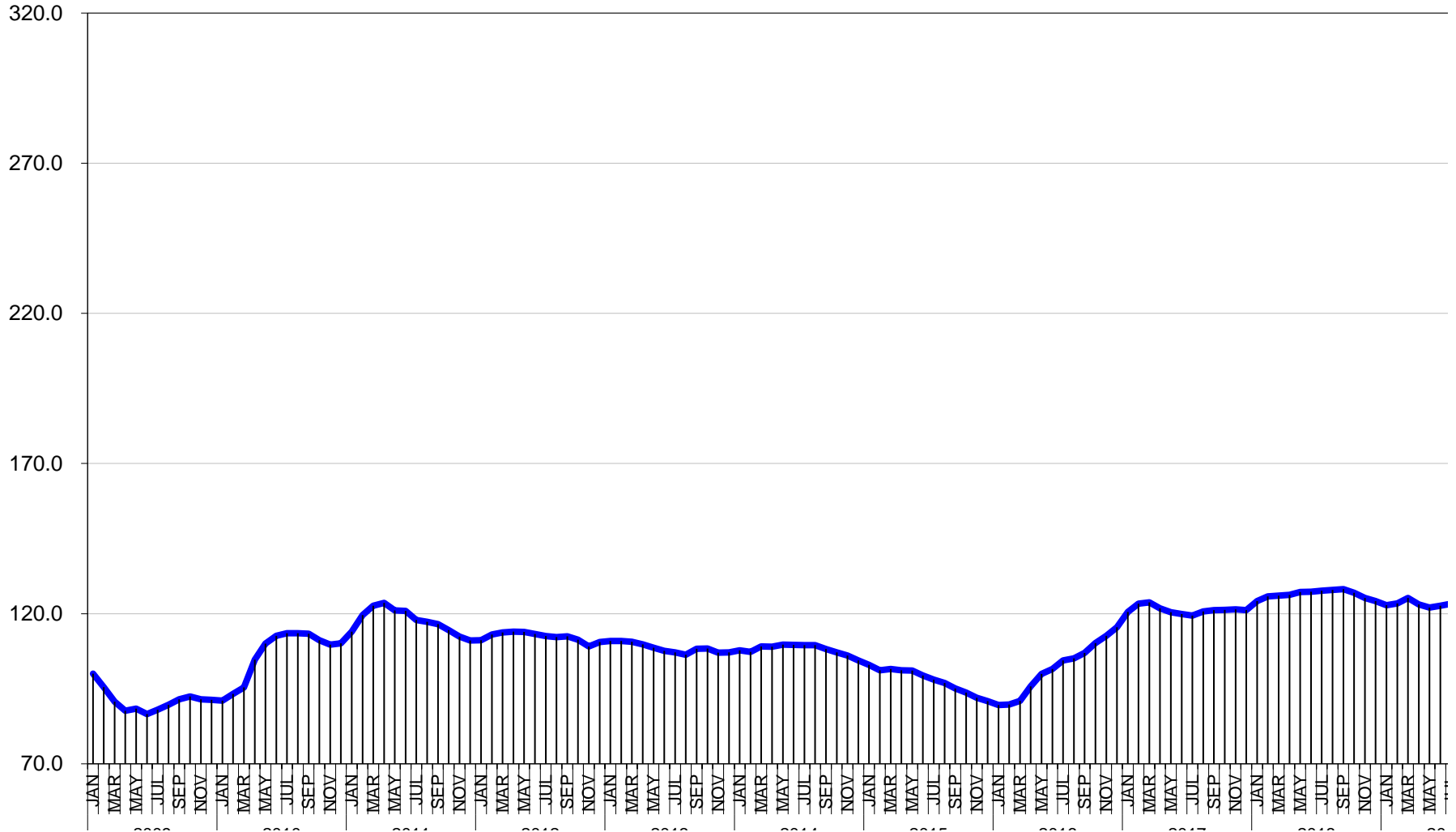
- Provisional
- Complete
- Amended



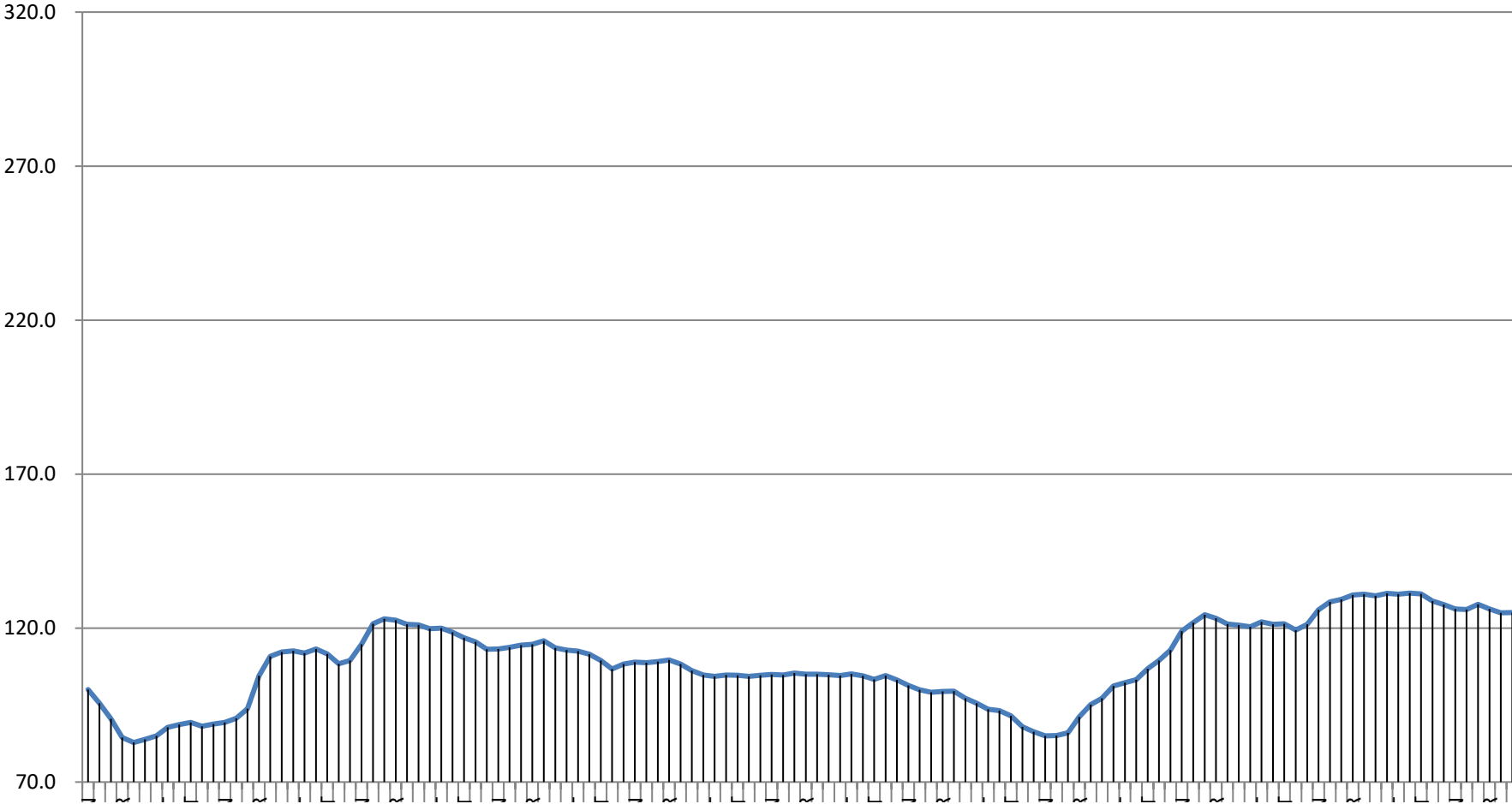
T&D EUROPE
PAPER
BASIS JAN 2009 = 100



T&D EUROPE
COLD STEEL
BASIS JAN 2009 = 100



**T&D EUROPE
HOT STEEL
BASIS JAN 2009 = 100**



January 2009 -February 2023

PUBLICATION DATE: 4 April 2023