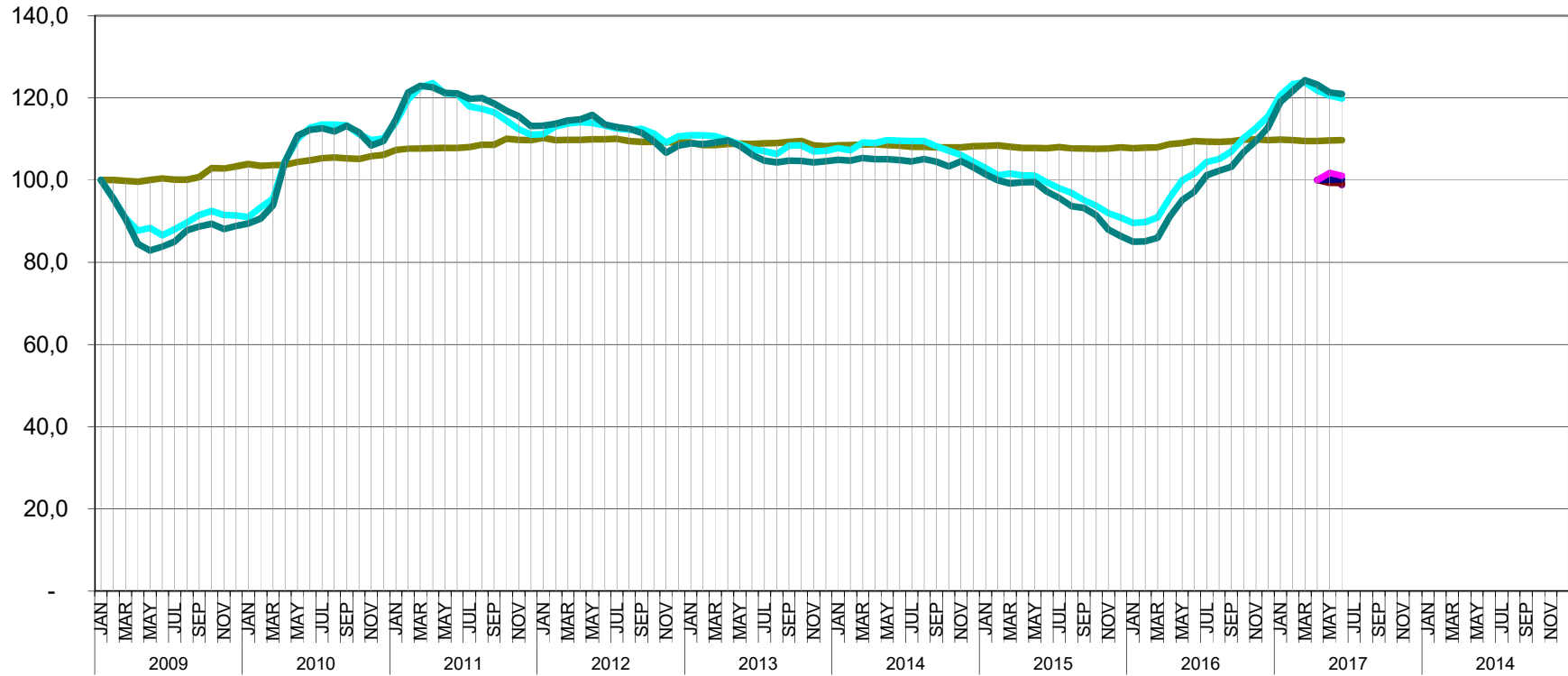
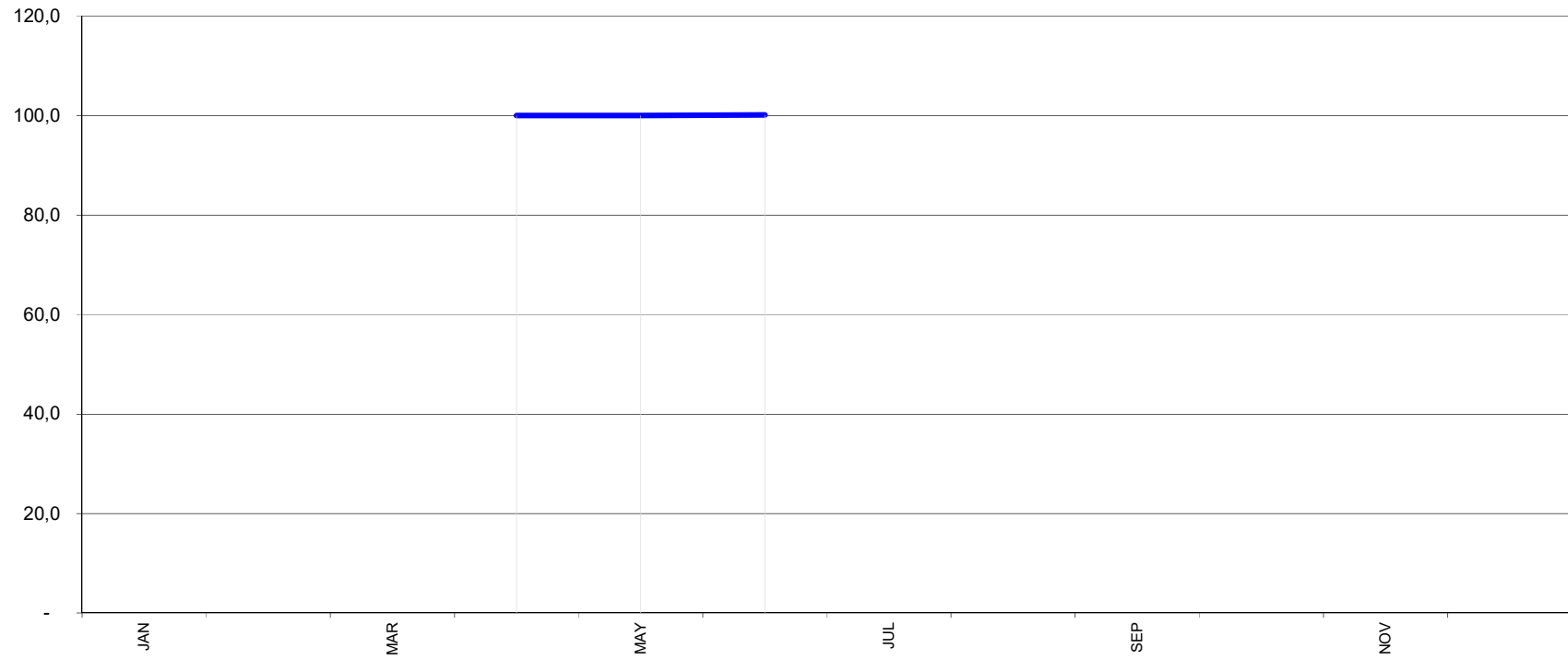


**T&D EUROPE**  
**TRANSFORMER COMMODITIES INDICES**  
 BASIS 2009 = 100 (except GOES+)



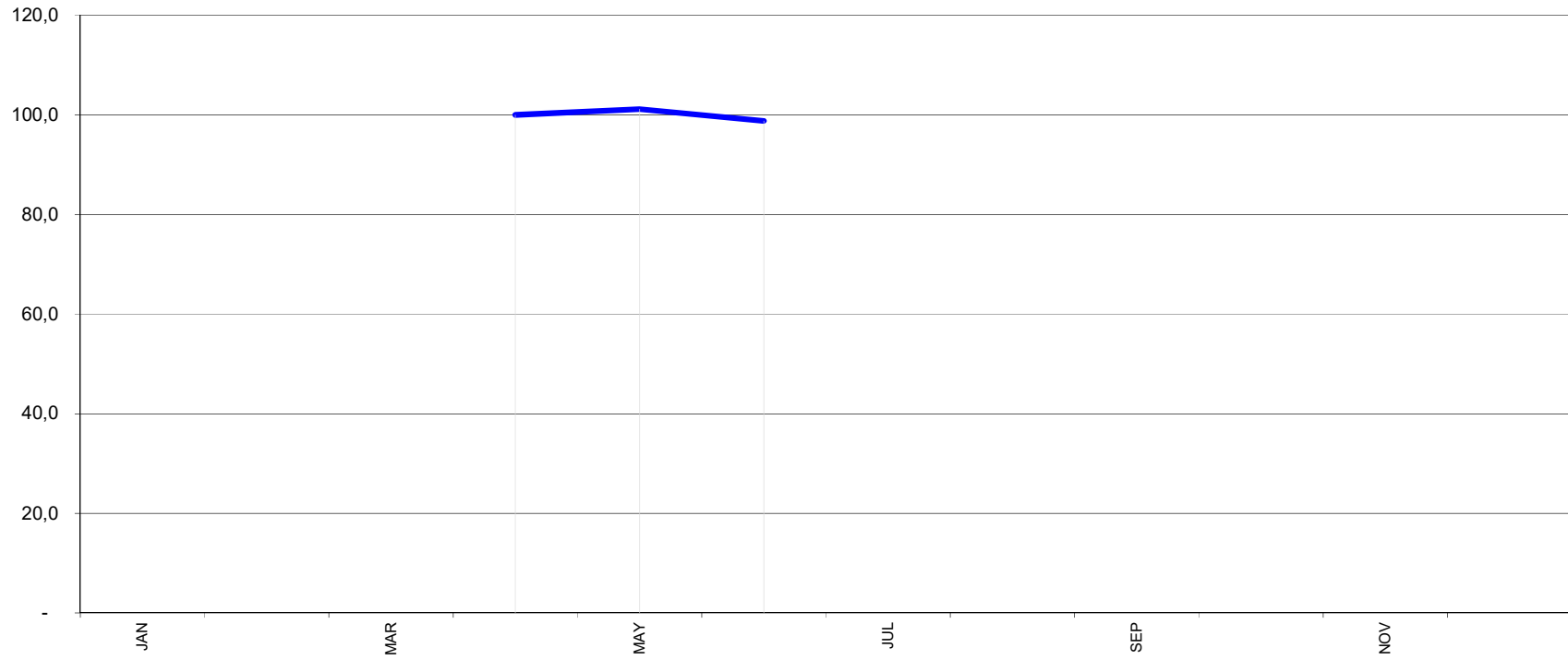
T&D EUROPE  
**CONV. GOES**  
BASIS APR 2017 = 100

- Provisional
- Complete
- Amended



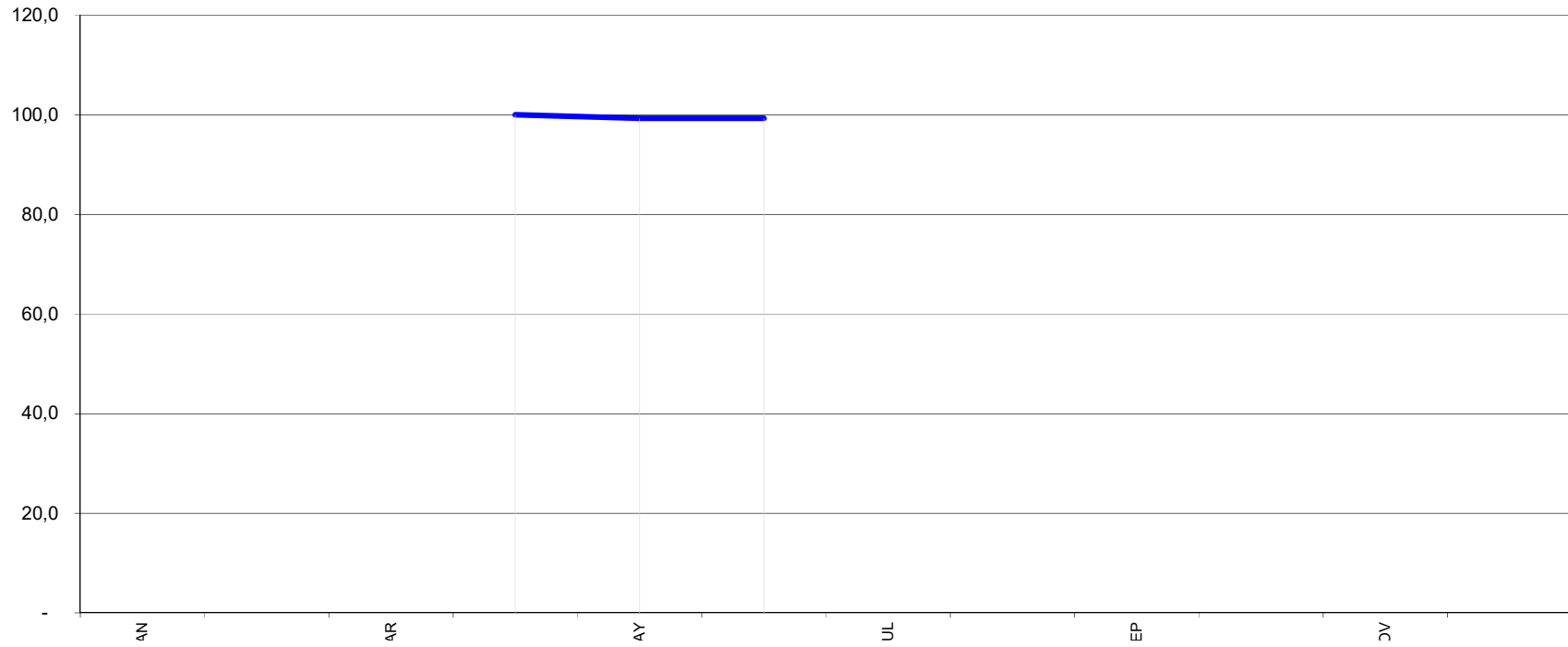
T&D EUROPE  
**HIGH GRADE GOES**  
BASIS APR 2017 = 100

- Provisional
- Complete
- Amended



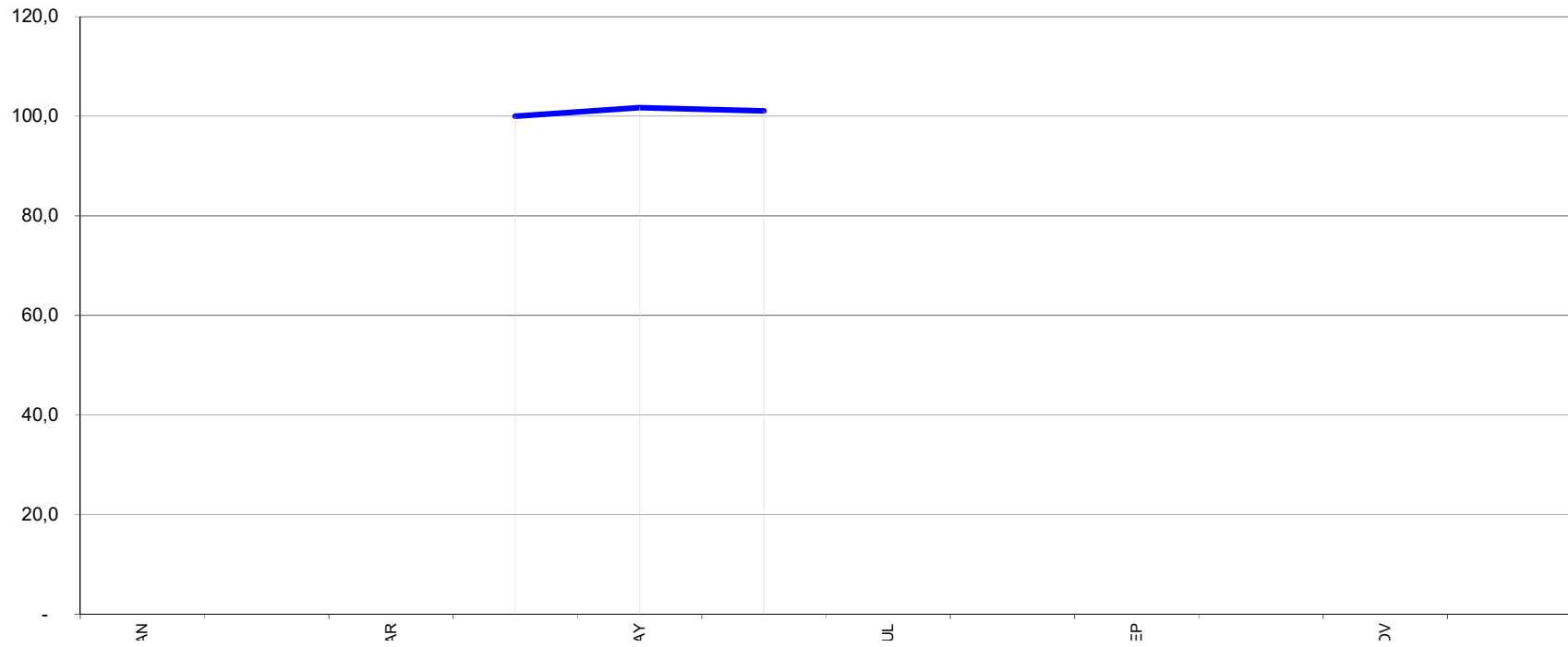
T&D EUROPE  
**SUPER HIGH GRADE GOES**  
BASIS APR 2017 = 100

- Provisional
- Complete
- Amended



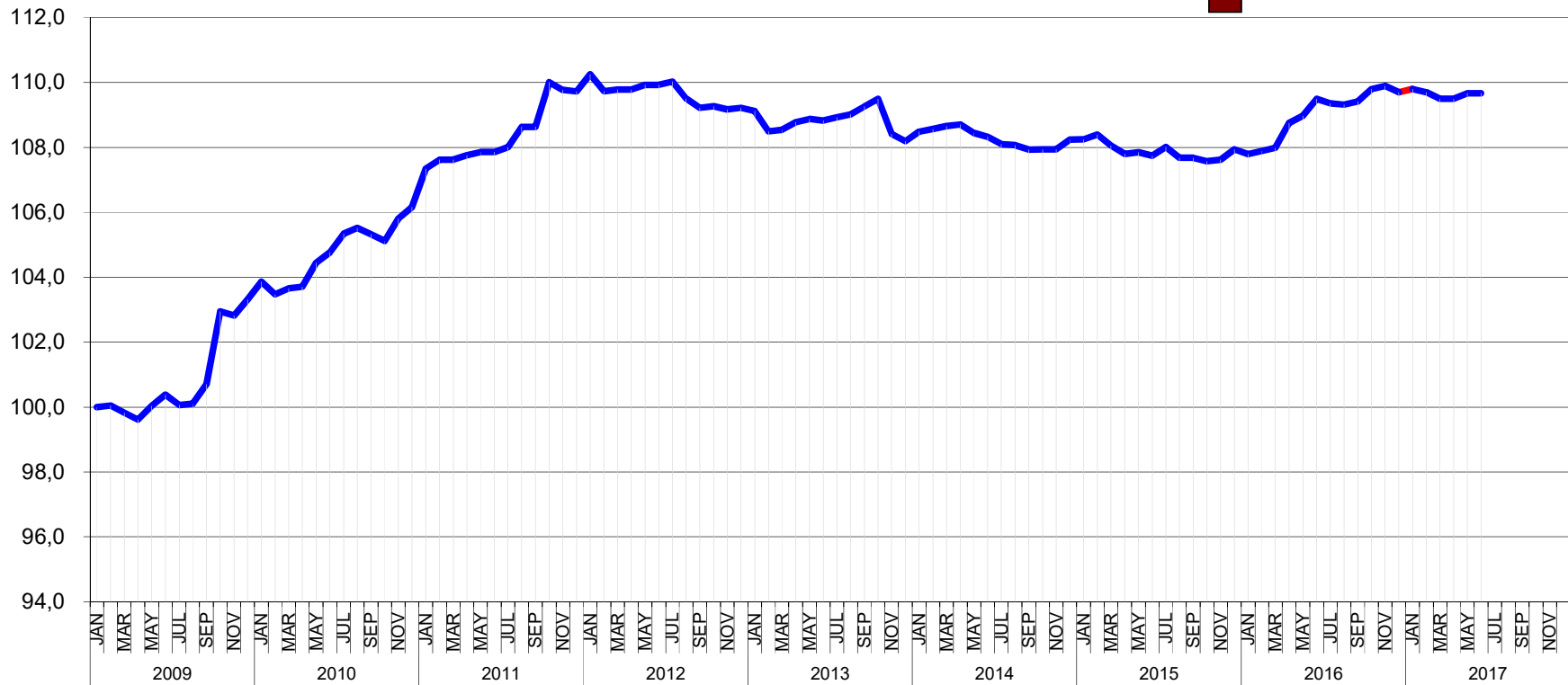
T&D EUROPE  
**MINERAL OIL**  
BASIS APR 2017 = 100

- Provisional
- Complete
- Amended



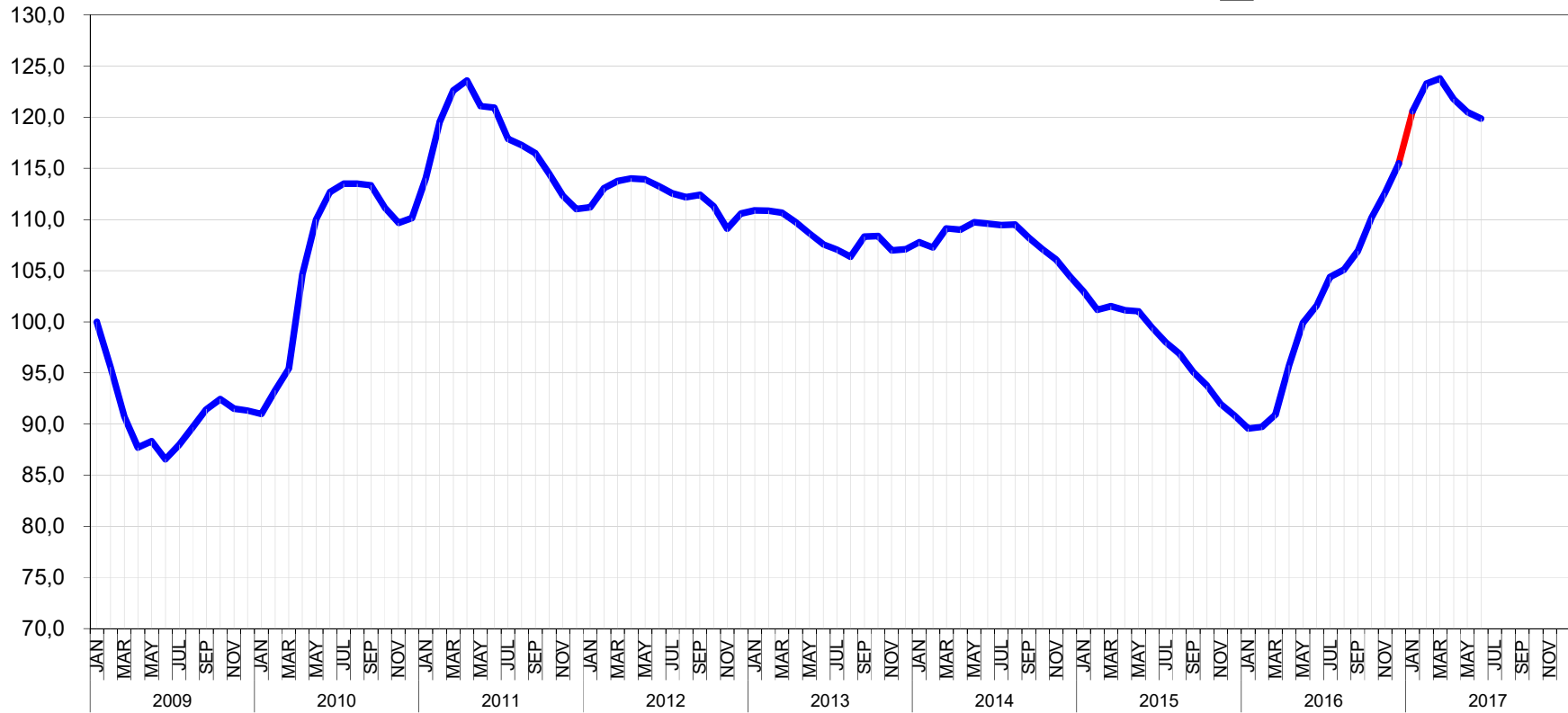
**T&D EUROPE  
PAPER**  
BASIS JAN 2009 = 100

- Provisional
- Complete
- Amended



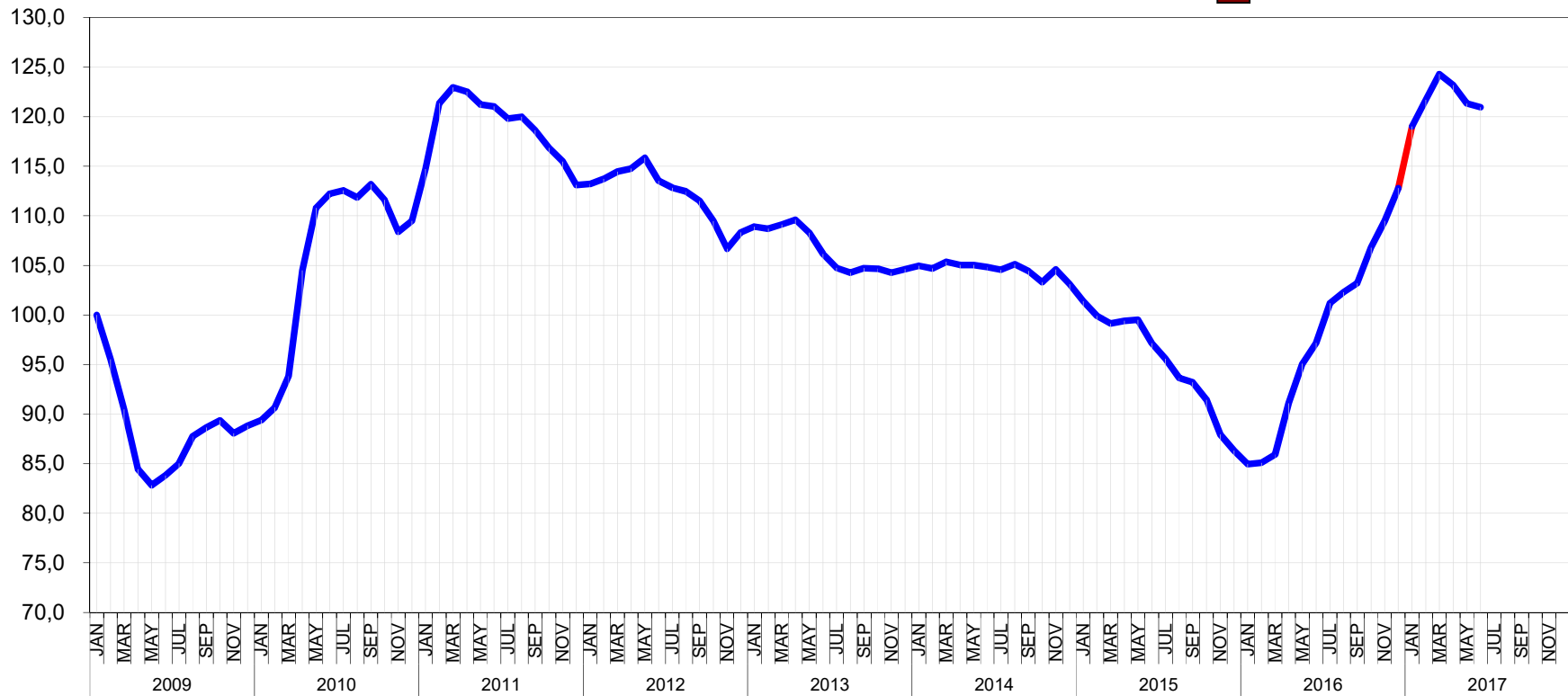
T&D EUROPE  
**COLD STEEL**  
 BASIS JAN 2009 = 100

- Provisional
- Complete
- Amended



T&D EUROPE  
**HOT STEEL**  
 BASIS JAN 2009 = 100

- Provisional
- Complete
- Amended

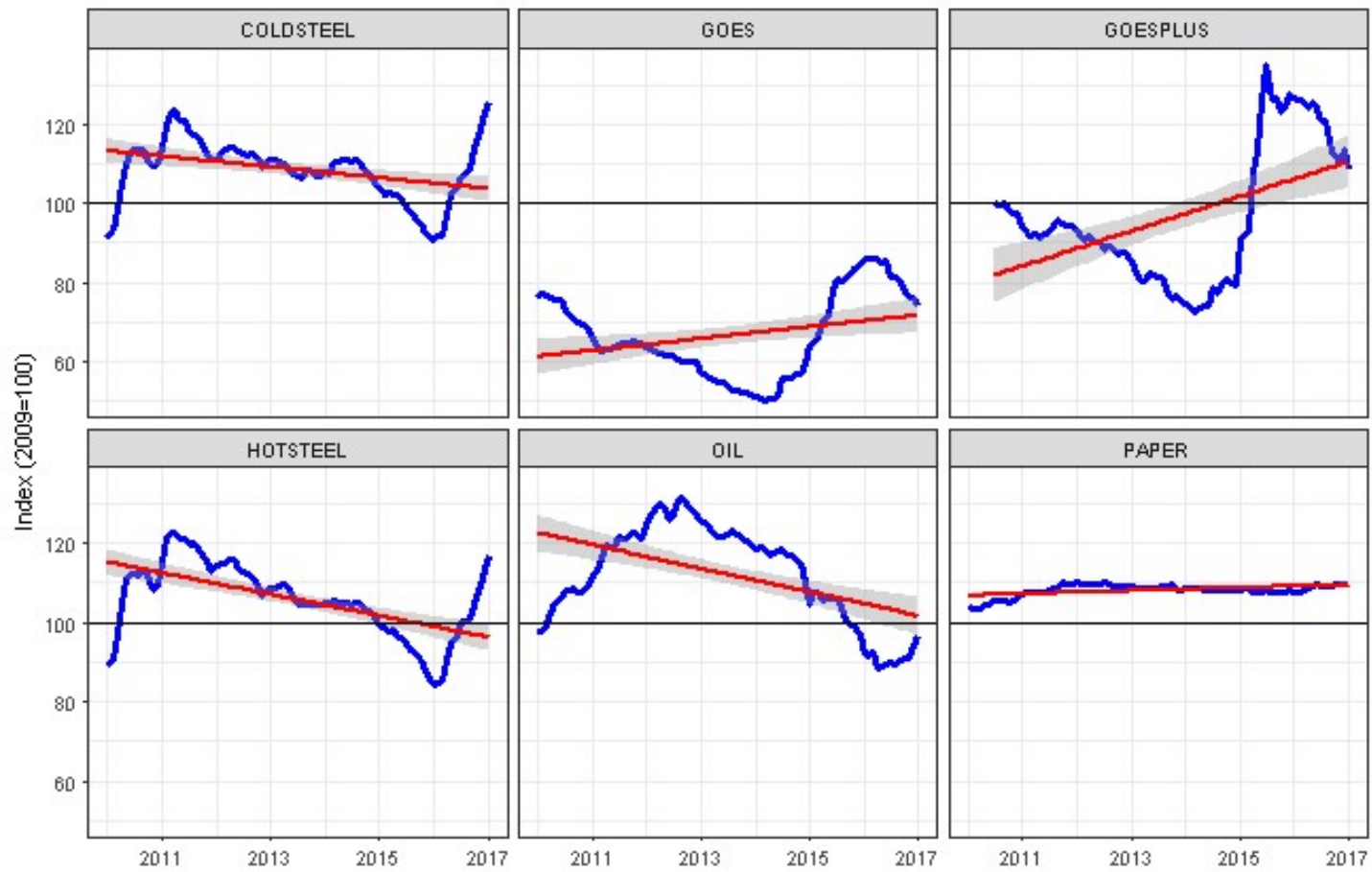




T & D Europe

TRANSFORMER COMMODITY INDICIES

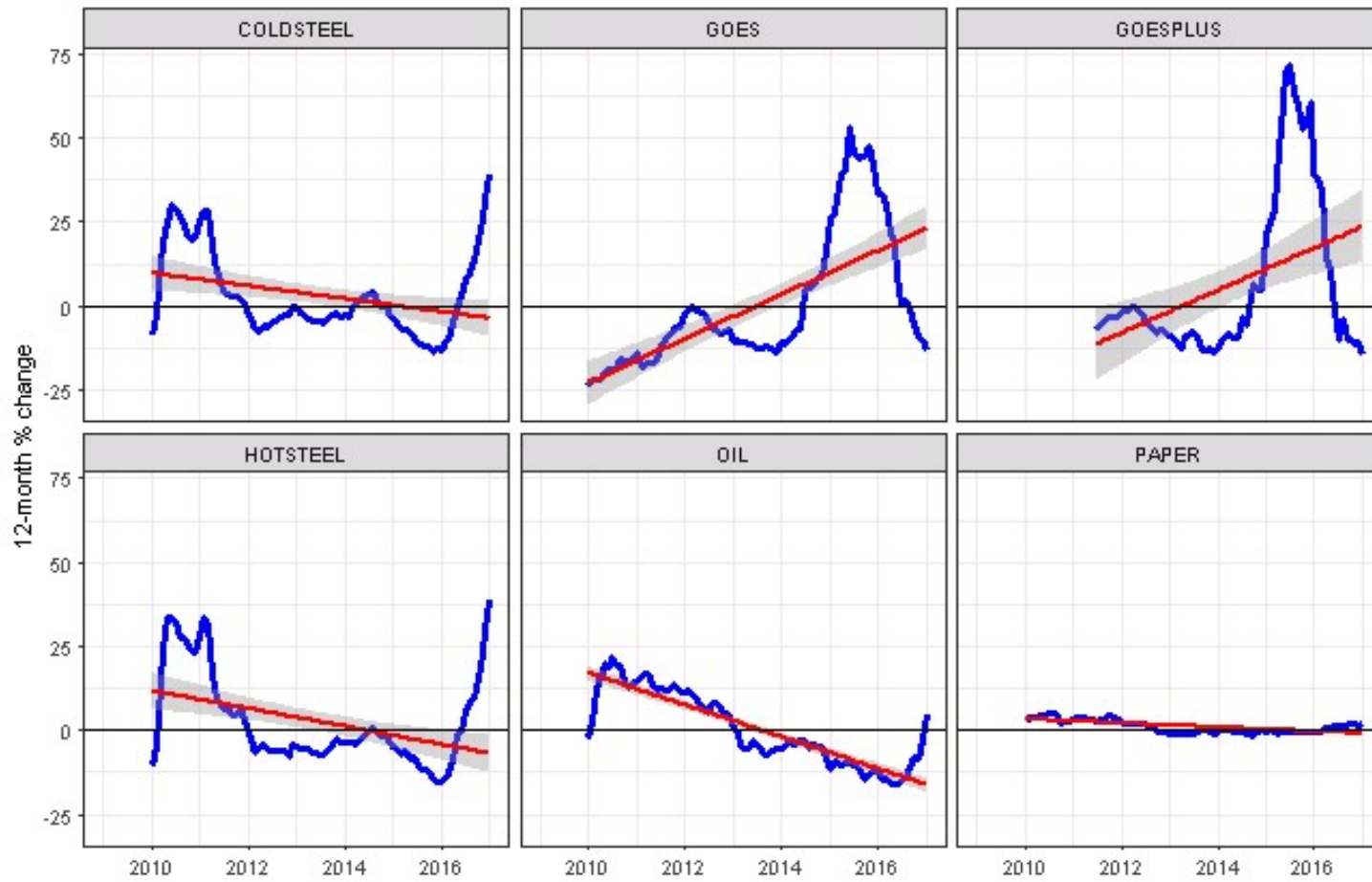
DASHBOARD - Indices (Jan 2009 = 100 except GOES PLUS)



T & D Europe

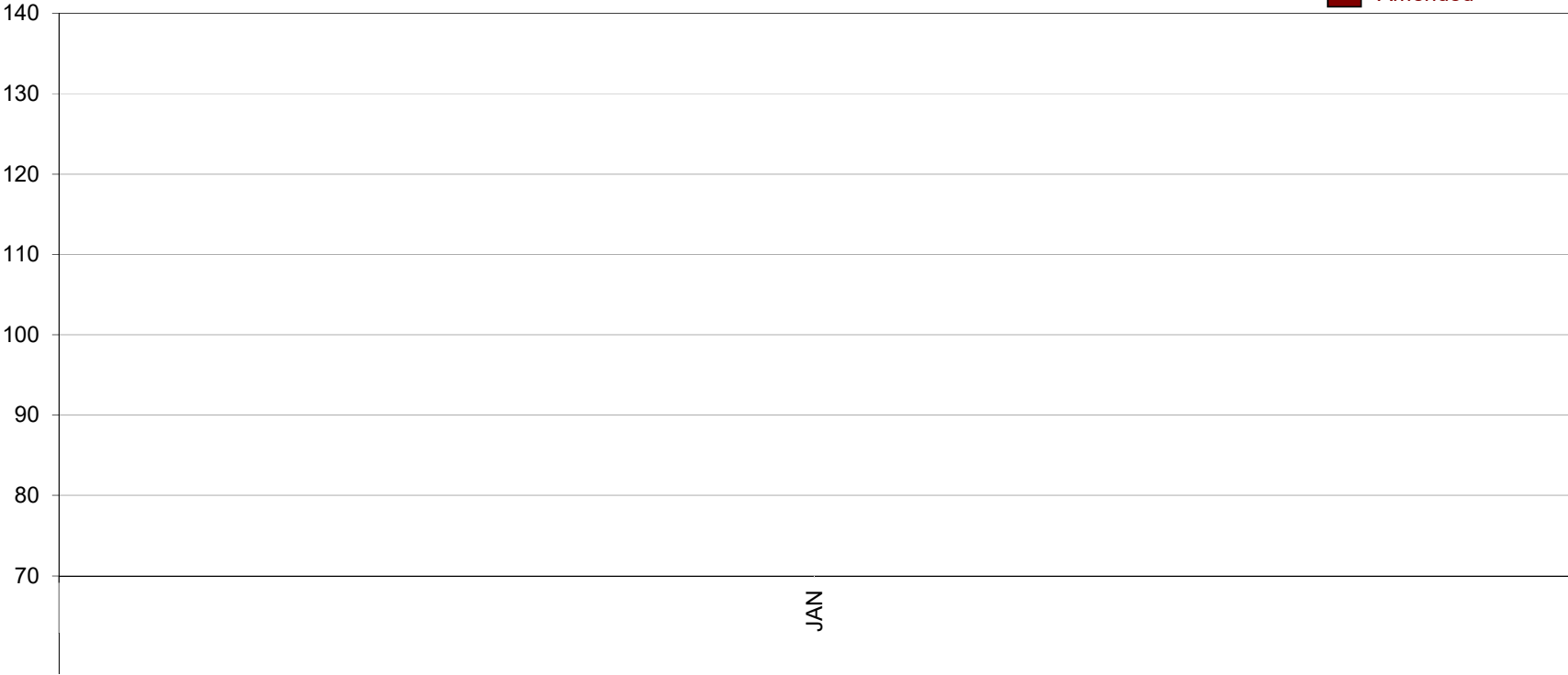
TRANSFORMER COMMODITY INDICIES

DASHBOARD : Year-on-Year % Change (on single month)



T&D EUROPE  
**ALUMINIUM**  
BASIS JAN 2009 = 100

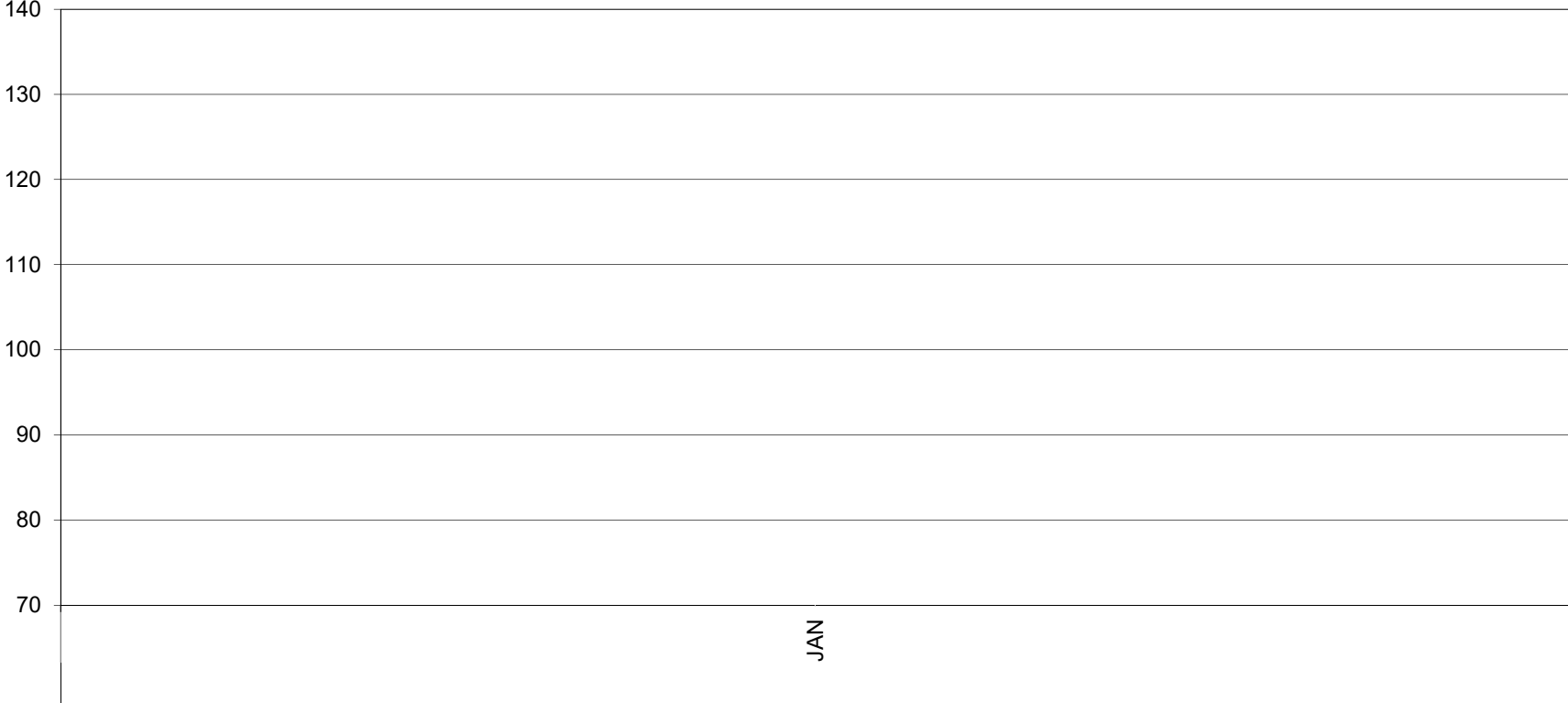
- Provisional
- Complete
- Amended



We have stopped publishing the **Aluminium index** after December 2012, as information is readily available from other sources.

T&D EUROPE  
**COPPER**  
BASIS JAN 2009 = 100

- Provisional
- Complete
- Amended



We have stopped publishing the **Copper index** after December 2012, as information is readily available from other sources.